



Beautiful sparkle, reliable life

MASTERColour CDM-TD

Range of double-ended, compact, high-efficiency, discharge lamps with a stable colour over lifetime and a crisp, sparkling light

Benefits

- Stable colour impression over lifetime
- High lamp efficacy results in low operating costs and low heat generation. Provides better operating costs and improved light quality versus standard quartz metal halide (MHN/W-TD)
- Long lamp life compared with incandescent, halogen and quartz metal halide (MHN/W-TD) lamps
- Relatively low heat output enhances comfort for shoppers and staff
- All types are UV-Block for reduced fading risks

Features

- Warm or cool white colour impression
- Colour rendering good to excellent
- Retrofit in double-ended luminaires for quartz metal halide lamps (MHN/W-TD), thereby allowing to reduce operating costs and improve colour quality
- Burning position horizontal +/-45°

Application

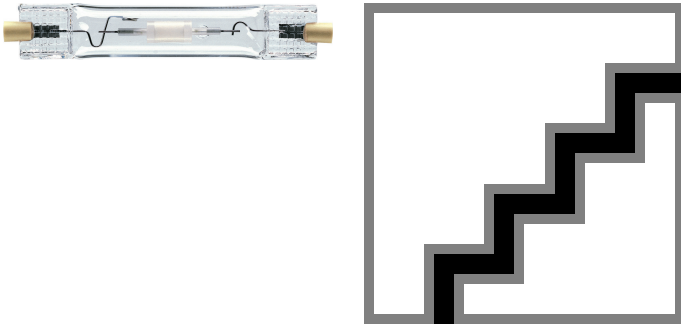
- Shops and shop windows, offices and public buildings
- Decorative outdoor: floodlighting of facades, statues and monuments

MASTERColour CDM-TD

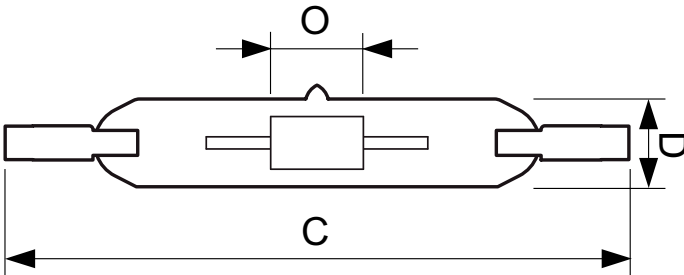
Warnings and Safety

- Use only in totally enclosed luminaire, even during testing (IEC61167, IEC 62035, IEC60598)
- The luminaire must be able to contain hot lamp parts if the lamp ruptures
- Lamps may use electronic or electromagnetic control gear
- Control gear must include end-of-life protection (IEC61167, IEC 62035)
- A lamp breaking is extremely unlikely to have any impact on your health. If a lamp breaks, ventilate the room for 30 minutes and remove the parts, preferably with gloves. Put them in a sealed plastic bag and take it to your local waste facilities for recycling. Do not use a vacuum cleaner.

Versions



Dimensional drawing



Product	D (max)	D O	C (max)
MASTERColour CDM-TD 150W/830 RX7s 1CT	22 mm	10 mm	137.43 mm
MASTERColour CDM-TD 70W/830 RX7s 1CT/12	22 mm	8 mm	119.63 mm
MASTERColour CDM-TD 150W/942 RX7s 1CT	22 mm	10 mm	137.43 mm

MASTERColour CDM-TD

Controls and Dimming

Dimmable	no
----------	----

Operating and Electrical

Re-ignition Time (Min) (Max)	15 min
------------------------------	--------

General Information

Cap-Base	RX7S
Life To 10% Failures (Nom)	13000 h
Life To 20% Failures (Nom)	15000 h
Life To 50% Failures (Nom)	16000 h
Life To 5% Failures (Nom)	9000 h
Operating Position	P45

Light Technical

Lumen Maintenance 2000 h (Min)	80 %
--------------------------------	------

Mechanical and Housing

Bulb Finish	Clear
-------------	-------

Approval and Application

Order Code	Full Product Name	Energy Consumption kWh/1000 h	Energy	
			Efficiency Label (EEL)	Mercury (Hg) Content (Nom)
928082205125	MASTERColour CDM-TD 70W/830 RX7s 1CT/12	78 kWh	A	3.4 mg
928083605133	MASTERColour CDM-TD 150W/830 RX7s 1CT	160 kWh	A+	10.23 mg
928084805133	MASTERColour CDM-TD 150W/942 RX7s 1CT	165 kWh	A+	8.29 mg

Operating and Electrical (1/2)

Order Code	Full Product Name	Lamp			
		Current (EM) (Nom)	Voltage (Max)	Voltage (Min)	Voltage (Nom)
928082205125	MASTERColour CDM-TD 70W/830 RX7s 1CT/12	0.95 A	102 V	86 V	94 V
928083605133	MASTERColour CDM-TD 150W/830 RX7s 1CT	1.8 A	106 V	90 V	98 V

Order Code	Full Product Name	Lamp			
		Current (EM) (Nom)	Voltage (Max)	Voltage (Min)	Voltage (Nom)
928084805133	MASTERColour CDM-TD 150W/942 RX7s 1CT	1.8 A	110 V	96 V	103 V

Operating and Electrical (2/2)

Order Code	Full Product Name	Power (Rated) (Nom)
928082205125	MASTERColour CDM-TD 70W/830 RX7s 1CT/12	71.0 W
928083605133	MASTERColour CDM-TD 150W/830 RX7s 1CT	145.0 W

Order Code	Full Product Name	Power (Rated) (Nom)
928084805133	MASTERColour CDM-TD 150W/942 RX7s 1CT	150.0 W

Luminaire Design Requirements

Order Code	Full Product Name	Bulb Temperature (Max)
928082205125	MASTERColour CDM-TD 70W/830 RX7s 1CT/12	500 °C

Order Code	Full Product Name	Bulb Temperature (Max)
928083605133	MASTERColour CDM-TD 150W/830 RX7s 1CT	650 °C
928084805133	MASTERColour CDM-TD 150W/942 RX7s 1CT	650 °C

Light Technical (1/3)

Order Code	Full Product Name	Chromaticity		Colour	
		Coordinate X (Nom)	Coordinate Y (Nom)	Code	Designation
928082205125	MASTERColour CDM-TD	0.443	0.401	830	Warm white (WW)

Order Code	Full Product Name	Chromaticity		Colour	
		Coordinate X (Nom)	Coordinate Y (Nom)	Code	Designation
	70W/830 RX7s 1CT/12				

MASTERColour CDM-TD

Order Code	Full Product Name	Chromaticity		Colour	
		Coordinate X (Nom)	Coordinate Y (Nom)	Code	Designation
928083605133	MASTERColour CDM-TD 150W/830 RX7s 1CT	0.437	0.399	830	Warm white (WW)

Order Code	Full Product Name	Chromaticity		Colour	
		Coordinate X (Nom)	Coordinate Y (Nom)	Code	Designation
928084805133	MASTERColour CDM-TD 150W/942 RX7s 1CT	0.380	0.375	942	Cool White (CW)

Light Technical (2/3)

Order Code	Full Product Name	Correlated Colour Temperature (Nom)	Colour		Lumen Maintenance 10000 h (Nom)	Lumen Maintenance 2000 h (Nom)	Lumen Maintenance 5000 h (Min)	Lumen Maintenance 5000 h (Nom)	Luminous Efficacy (rated) (Nom)	Luminous Flux (Nom)
			Colour Rendering Index (Min)	Colour Rendering Index (Nom)						
928082205125	MASTERColour CDM-TD 70W/830 RX7s 1CT/12	3000 K	77	80	70 %	85 %	70 %	80 %	85 lm/W	6000 lm
928083605133	MASTERColour CDM-TD 150W/830 RX7s 1CT	3000 K	-	88	75 %	90 %	75 %	85 %	91 lm/W	13250 lm
928084805133	MASTERColour CDM-TD 150W/942 RX7s 1CT	4200 K	-	96	70 %	90 %	75 %	85 %	87 lm/W	13750 lm

Light Technical (3/3)

Order Code	Full Product Name	Luminous Flux (Rated) (Nom)
928082205125	MASTERColour CDM-TD 70W/830 RX7s 1CT/12	6000 lm
928083605133	MASTERColour CDM-TD 150W/830 RX7s 1CT	13250 lm

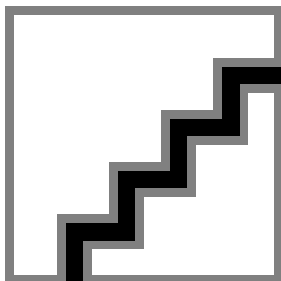
Order Code	Full Product Name	Luminous Flux (Rated) (Nom)
928084805133	MASTERColour CDM-TD 150W/942 RX7s 1CT	13750 lm

Mechanical and Housing

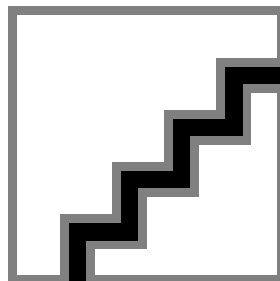
Order Code	Full Product Name	Bulb Shape
928082205125	MASTERColour CDM-TD 70W/830 RX7s 1CT/12	T22
928083605133	MASTERColour CDM-TD 150W/830 RX7s 1CT	T25

Order Code	Full Product Name	Bulb Shape
928084805133	MASTERColour CDM-TD 150W/942 RX7s 1CT	T25

Color Rendering Diagrams



LDCR_CDM-TD_70W-Colour rendering diagram



LDCR_CDM-TD_150W-Colour rendering diagram

MASTERColour CDM-TD

