



Product Description

HID-HeavyDuty BHL for HPL/HPI

Encapsulated electromagnetic copper/iron ballasts for HPL and HPI (Plus) lamps

Benefits

- Excellent resistance to chemical impact, humid conditions and environmental stress crack
- Long-lasting reliable solution – outstanding product lifetime of 15 years average
- Minimal watt losses thanks to orthocyclic winding process
- Control gear can be installed remotely

Features

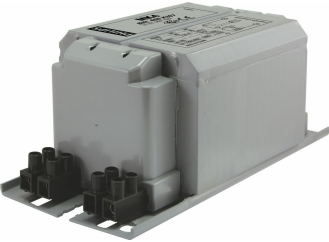
- Encapsulated with thermoplastic polyester resin, reinforced with glass fiber
- Ballasts designed for mercury lamps (HPL) without using an ignitor can also be used with HPI lamps together with an ignitor
- Equipped with screw terminal blocks as standard; insert contacts available upon request
- Ballasts for alternative mains voltages/frequencies available upon request
- Separate earth terminal (HID 'Heavy Duty')

Application

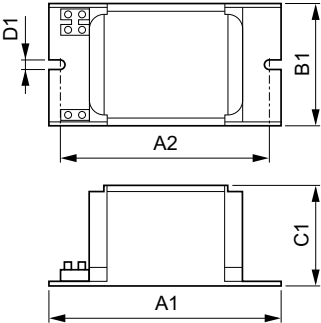
- Ideal for the following applications:
- Recreational sports lighting, outdoor and indoor
- Floodlighting of buildings and monuments
- Area lighting, e.g. harbors, building sites
- Canopy lighting, e.g. petrol stations
- High bay lighting, e.g. industrial workshops, exhibition halls, hypermarkets, shopping malls, DIY stores, churches, airports, railway stations
- Climatic suitability: use in luminaires under normal humidity conditions (not drip-proof)

HID-HeavyDuty BHL for HPL/HPI

Versions



Dimensional drawing



Product	D1	C1	A1	A2	B1
BHL 250 L40-A2 230V 50Hz HD2-126	6.2 mm	66.0 mm	126.0 mm	107.5 mm	81.0 mm
BHL 400 L40-A2 230V 50Hz HD2-151	6.2 mm	66.0 mm	151.0 mm	132.5 mm	81.0 mm

