

Long-lasting, reliable solution

HID-HeavyDuty BSN semi-parallel for SON/CDO/MH/HPI

Encapsulated electromagnetic copper/iron ballasts for use with an external semi-parallel ignitor for CDM, CDO, MH, HPI (Plus) and SON lamps

Benefits

- Excellent resistance to chemical impact, humid conditions and environmental stress crack
- Long-lasting reliable solution – outstanding product lifetime of 15 years average
- Minimal watt losses thanks to orthocyclic winding process
- Control gear can be installed remotely

Features

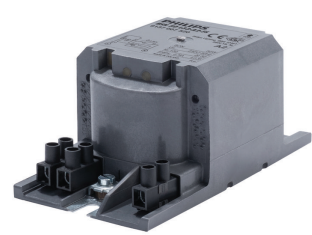
- Encapsulated with thermoplastic polyester resin, reinforced with glass fiber
- Equipped with screw terminal blocks as standard; insert contacts available upon request
- Ballasts for alternative mains voltages/frequencies available upon request
- Separate earth terminal (HID 'Heavy Duty')

Application

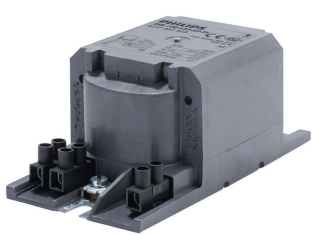
- Outdoor lighting (most popular application: road and tunnel lighting)

HID-HeavyDuty BSN semi-parallel for SON/CDO/MH/HPI

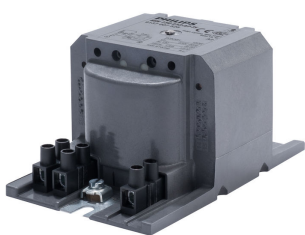
Versions



BSN 50 L33-A2-TS 230V



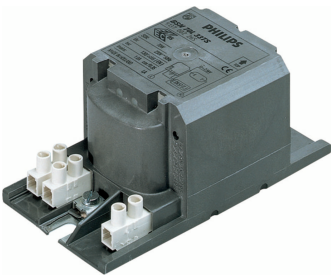
BSN 100 L33-A2-TS 230V



BSN 150 L33-A2-TS 230V

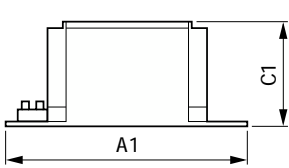
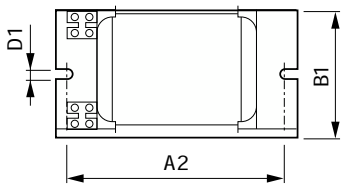
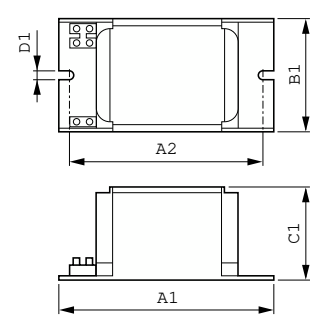


BSN 250 L33-A2-TS 230V



GPPR BSN-HD PHL

Dimensional drawing



Product	D1	C1	A1	A2	B1
BSN 70 L33-A2-TS 230V 50Hz	6.2 mm	53.0 mm	118.0 mm	103.0 mm	65.0 mm
HD1-118					

Product	A1	A2	B1	C1	D1
BSN 100 L33-A2-TS 230V 50Hz	123 mm	108 mm	65 mm	53 mm	6.2 mm
BSN 150 L33-A2-TS 230V 50Hz	126 mm	108 mm	81 mm	66 mm	6.2 mm
BSN 250 L33-A2-TS 230V 50Hz	151 mm	132 mm	81 mm	66 mm	6.2 mm
BSN 50 L33-A2-TS 230V 50Hz	118 mm	103 mm	65 mm	53 mm	6.2 mm

HID-HeavyDuty BSN semi-parallel for SON/CDO/MH/HPI

