

# Soluzione affidabile, di lunga durata

## HID-HeavyDuty BSN ins.semiparallelo

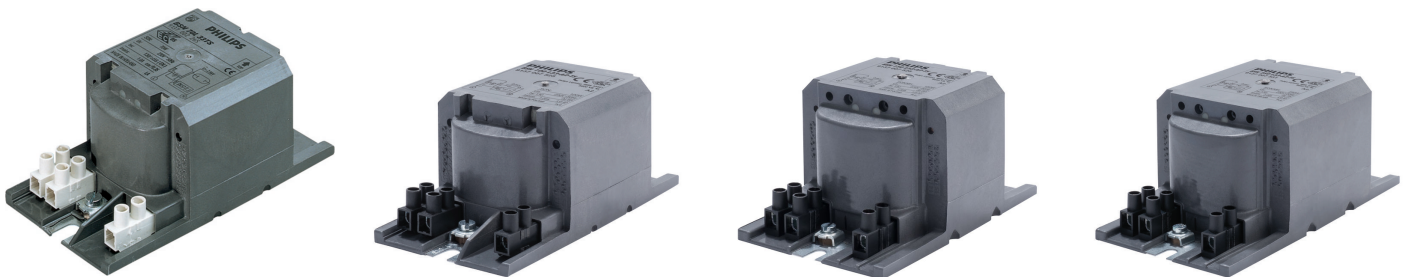
Reattori elettromagnetici in rame incapsulati da usare con un accenditore esterno semi-parallelo per lampade CDM, CDO, MH, HPI (Plus) e SON

### Vantaggi

### Caratteristiche

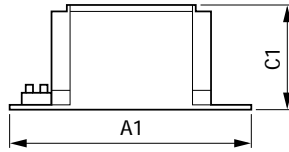
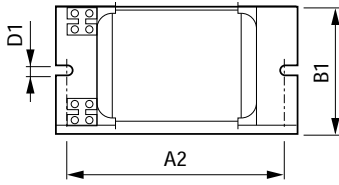
### Applicazione

### Versions

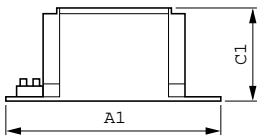
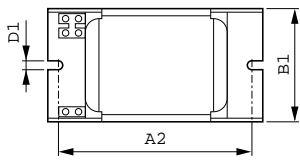


# HID-HeavyDuty BSN ins.semiparallelo

## Disegno tecnico



Product	A1	A2	B1	C1	D1
BSN 250 L33-A2-TS 230V 50Hz	151 mm	132 mm	81 mm	66 mm	6,2 mm
BSN 100 L33-A2-TS 230V 50Hz	123 mm	108 mm	65 mm	53 mm	6,2 mm
BSN 150 L33-A2-TS 230V 50Hz	126 mm	108 mm	81 mm	66 mm	6,2 mm



Product
BSN 70 L33-A2-TS 230V 50Hz HD1-118
BSN 400 L33-A2-TS 230V 50Hz HD3-166

### Funzionamento e parte elettrica

Frequenza di ingresso	50 Hz
Tensione in ingresso	230 V

### Informazioni generali

Numero di lampade	1 pezzo/unità
-------------------	---------------

## Informazioni generali

Order Code	Full Product Name	Tipo di lampada
05968031	BSN 70 L33-TS 230V 50Hz HD1-118	SON/CDO
05976530	BSN 400 L33-TS 230V 50Hz HD3-166	SON/HPI
74094100	BSN 100 L33-A2-TS 230V 50Hz	SON

Order Code	Full Product Name	Tipo di lampada
74100900	BSN 150 L33-A2-TS 230V 50Hz	SON/MH
74108500	BSN 250 L33-A2-TS 230V 50Hz	SON/MH

## Caratteristiche del sistema

Order Code	Full Product Name	Potenza specificata reattore-lampada
05968031	BSN 70 L33-TS 230V 50Hz HD1-118	70 W
05976530	BSN 400 L33-TS 230V 50Hz HD3-166	400 W
74094100	BSN 100 L33-A2-TS 230V 50Hz	100 W

Order Code	Full Product Name	Potenza specificata reattore-lampada
74100900	BSN 150 L33-A2-TS 230V 50Hz	150 W
74108500	BSN 250 L33-A2-TS 230V 50Hz	250 W

