



GreenSpace – high-efficiency sustainable LED solution

GreenSpace

Customers want to strike the ideal balance between their initial investment and the cost of the installation during its lifetime. GreenSpace is a cost-efficient and sustainable downlight that can be used to replace conventional CFL downlights in general lighting applications. It features the latest LED technology, which enables extremely low power consumption, while delivering consistent light output, stable color performance and high color rendering. The product's long lifetime makes it a true 'fit and forget' solution.

Benefits

- High system efficacy: > 80 lm/W (mini, DN460B/DN461B); > 100 lm/W (compact, DN470B/DN471B)
- Up to 70% energy saving: total cost of ownership recovered in less than 2 years
- Office lighting norm-compliant, with stable color performance and high color rendering

Features

- Energy-efficient, durable LED technology
- High system efficacy: > 80 lm/W (mini, DN460B/DN461B); > 100 lm/W (compact, DN470B/DN471B)
- Stable color performance and high color rendering
- Available with IP44 or emergency lighting
- Available in UGR22 and UGR19 versions

Application

- Offices
- Retail
- Hotels and hospitals

Specifications

Type	DN460B (UGR22 version, mini)
	DN461B (UGR19 version, mini)
	DN470B (UGR22 version, compact)
	DN471B (UGR19 version, compact)
Ceiling type	Plaster (board) ceiling
Light source	Non replaceable LED module
Power	DN460B / DN461B: 13.8 W
	DN470B / DN471B: 21 W
Luminous flux	DN460B: 1200 lm
	DN461B: 1150 lm
	DN470B: 2200 lm
	DN471B: 2100 lm
Correlated Color	Warm white, 3000 K
Temperature	Neutral white, 4000 K
Color Rendering Index	> 80
Median useful life L70B50	70,000 hours
Median useful life L80B50	50,000 hours
Median useful life L90B50	25,000 hours

Average ambient temperature	+25 °C
Operating temperature range	+10 to +40 °C
Driver	Separate
Mains voltage	230 or 240 V / 50-60 Hz
Dimming	Non-dimming and DALI versions
Options	Emergency lighting (EL3)
	IP20 and IP44 versions
	Through-wiring versions (CU3)
	Protection glass, opal (PGO)
Material	Housing: die-cast aluminum
	Reflector: plastic, aluminum coated
Color	White, RAL 9010
Optic	Reflector, plastic with aluminum coating
Connection	Push-in connector (PI) or with pull relief (PIP)
Installation	Fixation by means of spring fasteners
	Through-wiring versions available
	Installation without removing lamps and optic
Remarks	External driver included

Versions



LED Module, system flux 1100 lm



LED Module, system flux 2000 lm



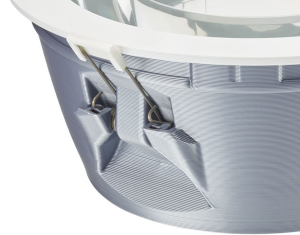
LED Module, system flux 2000 lm



Product details



Greenspace_EU_gen_2-
DN462_463_472_473B-1DPP.TIF



Greenspace_EU_gen_2-
DN462_463_472_473B-3DPP.TIF



Greenspace_EU_gen_2-DN462B-
DPP.TIF



Greenspace_EU_gen_2-
DN462_463_472_473B-2DPP.TIF



Greenspace_EU_gen_2-DN472B-
DPP.TIF



Greenspace_EU_gen_2-DN473B-
DPP.TIF

Application Conditions

Suitable for random switching	Yes
-------------------------------	-----

General Information

Beam angle of light source	- °
CE mark	CE mark
Protection class IEC	Safety class II (II)
Driver included	Yes
Flammability mark	NO
Glow-wire test	750/5
Light source replaceable	No
Number of gear units	1 unit

Initial Performance (IEC Compliant)

Init. Colour Rendering Index	>80
Luminous flux tolerance	+/-10%

Mechanical and Housing

Colour	White RAL 9003
--------	----------------

Application Conditions

Order Code	Full Product Name	Ambient temperature range	Maximum dim level
38463000	DN462B LED11S/840 PSU-E C PCC WH	-15 to +40 °C	Not applicable
79320300	DN460B LED11S/840 PSU-E C WH P	+10 to +40 °C	Not applicable
38470800	DN472B LED20S/830 PSE-E C PCC WH	-15 to +40 °C	Not applicable
38471500	DN472B LED20S/840 PSE-E C PCC WH	-15 to +40 °C	Not applicable
79328900	DN470B LED20S/840 PSU-E C WH P	+10 to +40 °C	Not applicable
79330200	DN470B LED20S/840 PSD-VLC-E C WH P	+10 to +40 °C	1%
79352400	DN470B LED20S/840 PSU-E C ELP3 WH P	+10 to +40 °C	Not applicable
94579400	DN470B LED30S/830 PSED-VLC-E C WH P	+10 to +40 °C	1%
38475300	DN473B LED20S/840 PSU-E C PCC WH	-15 to +40 °C	Not applicable
79333300	DN471B LED20S/830 PSED-VLC-E C WH P	+10 to +40 °C	1%
79334000	DN471B LED20S/840 PSD-VLC-E C WH P	+10 to +40 °C	1%
79337100	DN462B LED11S/830 PSED-VLC-E C PCO WH	-15 to +40 °C	1%
79348700	DN472B LED20S/840 PSU-E PCO WH	-15 to +40 °C	Not applicable

Approval and Application

Order Code	Full Product Name	Mech. impact protection code	Ingress protection code
38463000	DN462B LED11S/840 PSU-E C PCC WH	IK06	IP54
79320300	DN460B LED11S/840 PSU-E C WH P	IK02	IP20
38470800	DN472B LED20S/830 PSE-E C PCC WH	IK06	IP54
38471500	DN472B LED20S/840 PSE-E C PCC WH	IK06	IP54
79328900	DN470B LED20S/840 PSU-E C WH P	IK02	IP20
79330200	DN470B LED20S/840 PSD-VLC-E C WH P	IK02	IP20
79352400	DN470B LED20S/840 PSU-E C ELP3 WH P	IK02	IP20
94579400	DN470B LED30S/830 PSED-VLC-E C WH P	IK02	IP20

Order Code	Full Product Name	Mech. impact protection code	Ingress protection code
38475300	DN473B LED20S/840 PSU-E C PCC WH	IK06	IP54
79333300	DN471B LED20S/830 PSED-VLC-E C WH P	IK02	IP20
79334000	DN471B LED20S/840 PSD-VLC-E C WH P	IK02	IP20
79337100	DN462B LED11S/830 PSED-VLC-E C PCO WH	IK06	IP54
79348700	DN472B LED20S/840 PSU-E PCO WH	IK06	IP54

Controls and Dimming

Order Code	Full Product Name	Dimmable
38463000	DN462B LED11S/840 PSU-E C PCC WH	No
79320300	DN460B LED11S/840 PSU-E C WH P	No
38470800	DN472B LED20S/830 PSE-E C PCC WH	No
38471500	DN472B LED20S/840 PSE-E C PCC WH	No
79328900	DN470B LED20S/840 PSU-E C WH P	No
79330200	DN470B LED20S/840 PSD-VLC-E C WH P	Yes
79352400	DN470B LED20S/840 PSU-E C ELP3 WH P	No

Order Code	Full Product Name	Dimmable
94579400	DN470B LED30S/830 PSED-VLC-E C WH P	Yes
38475300	DN473B LED20S/840 PSU-E C PCC WH	No
79333300	DN471B LED20S/830 PSED-VLC-E C WH P	Yes
79334000	DN471B LED20S/840 PSD-VLC-E C WH P	Yes
79337100	DN462B LED11S/830 PSED-VLC-E C PCO WH	Yes
79348700	DN472B LED20S/840 PSU-E PCO WH	No

Operating and Electrical

Order Code	Full Product Name	Input Voltage
38463000	DN462B LED11S/840 PSU-E C PCC WH	220 to 240 V

Order Code	Full Product Name	Input Voltage
79320300	DN460B LED11S/840 PSU-E C WH P	220-240 V

Order Code	Full Product Name	Input Voltage
38470800	DN472B LED20S/830 PSE-E C PCC WH	220 to 240 V
38471500	DN472B LED20S/840 PSE-E C PCC WH	220 to 240 V
79328900	DN470B LED20S/840 PSU-E C WH P	220-240 V
79330200	DN470B LED20S/840 PSD-VLC-E C WH P	220-240 V
79352400	DN470B LED20S/840 PSU-E C ELP3 WH P	220-240 V
94579400	DN470B LED30S/830 PSED-VLC-E C WH P	220-240 V

Order Code	Full Product Name	Input Voltage
38475300	DN473B LED20S/840 PSU-E C PCC WH	220 to 240 V
79333300	DN471B LED20S/830 PSED-VLC-E C WH P	220-240 V
79334000	DN471B LED20S/840 PSD-VLC-E C WH P	220-240 V
79337100	DN462B LED11S/830 PSED-VLC-E C PCO WH	220-240 V
79348700	DN472B LED20S/840 PSU-E PCO WH	220-240 V

General Information (1/2)

Order Code	Full Product Name	Cap-Base	Emergency lighting	ENEC mark	Gear
38463000	DN462B LED11S/840 PSU-E C PCC WH	-	No	ENEC mark	-
79320300	DN460B LED11S/840 PSU-E C WH P	-	-	ENEC mark	-
38470800	DN472B LED20S/830 PSE-E C PCC WH	-	No	ENEC mark	-
38471500	DN472B LED20S/840 PSE-E C PCC WH	-	No	ENEC mark	-
79328900	DN470B LED20S/840 PSU-E C WH P	-	-	ENEC mark	-
79330200	DN470B LED20S/840 PSD-VLC-E C WH P	-	-	ENEC mark	-
79352400	DN470B LED20S/840 PSU-E C ELP3 WH P	-	EL3	ENEC mark	-

Order Code	Full Product Name	Cap-Base	Emergency lighting	ENEC mark	Gear
94579400	DN470B LED30S/830 PSED-VLC-E C WH P	-	-	-	-
38475300	DN473B LED20S/840 PSU-E C PCC WH	-	No	ENEC mark	-
79333300	DN471B LED20S/830 PSED-VLC-E C WH P	-	-	ENEC mark	-
79334000	DN471B LED20S/840 PSD-VLC-E C WH P	-	-	ENEC mark	-
79337100	DN462B LED11S/830 PSED-VLC-E C PCO WH	-	-	ENEC mark	-
79348700	DN472B LED20S/840 PSU-E PCO WH	-	-	ENEC mark	-

General Information (2/2)

Order Code	Full Product Name	Lamp family code	Number of light sources	Optic type	Product Family Code
38463000	DN462B LED11S/840 PSU-E C PCC WH	LED11S	1	C	DN461B
79320300	DN460B LED11S/840 PSU-E C WH P	LED11S	1	C	DN460B
38470800	DN472B LED20S/830 PSE-E C PCC WH	LED20S	1	C	DN471B
38471500	DN472B LED20S/840 PSE-E C PCC WH	LED20S	1	C	DN471B
79328900	DN470B LED20S/840 PSU-E C WH P	LED20S	1	C	DN470B
79330200	DN470B LED20S/840 PSD-VLC-E C WH P	LED20S	1	C	DN470B
79352400	DN470B LED20S/840 PSU-E C ELP3 WH P	LED20S	1	C	DN470B

Order Code	Full Product Name	Lamp family code	Number of light sources	Optic type	Product Family Code
94579400	DN470B LED30S/830 PSED-VLC-E C WH P	-	-	C	DN470B
38475300	DN473B LED20S/840 PSU-E C PCC WH	LED20S	1	C	DN471B
79333300	DN471B LED20S/830 PSED-VLC-E C WH P	LED20S	1	C	DN471B
79334000	DN471B LED20S/840 PSD-VLC-E C WH P	LED20S	1	C	DN471B
79337100	DN462B LED11S/830 PSED-VLC-E C PCO WH	LED11S	1	No	DN461B
79348700	DN472B LED20S/840 PSU-E PCO WH	LED20S	1	No	DN471B

Initial Performance (IEC Compliant) (1/2)

Order Code	Full Product Name	Initial chromaticity	Init. Corr. Colour Temperature	Initial LED luminaire efficacy	Initial luminous flux
38463000	DN462B LED11S/840 PSU-E C PCC WH	(0.38, 0.38) SDCM <5	4000 K	109 lm/W	1070 lm
79320300	DN460B LED11S/840 PSU-E C WH P	(0.38, 0.38) SDCM <3.5	4000 K	114 lm/W	1125 lm
38470800	DN472B LED20S/830 PSE-E C PCC WH	(0.44, 0.40) SDCM <5	3000 K	120 lm/W	2025 lm
38471500	DN472B LED20S/840 PSE-E C PCC WH	(0.38, 0.38) SDCM <5	4000 K	125 lm/W	2100 lm
79328900	DN470B LED20S/840 PSU-E C WH P	(0.38, 0.38) SDCM <3.5	4000 K	131 lm/W	2200 lm
79330200	DN470B LED20S/840 PSD-VLC-E C WH P	(0.38, 0.38) SDCM <3.5	4000 K	131 lm/W	2200 lm
79352400	DN470B LED20S/840 PSU-E C ELP3 WH P	(0.38, 0.38) SDCM <3.5	4000 K	131 lm/W	2200 lm

Order Code	Full Product Name	Initial chromaticity	Init. Corr. Colour Temperature	Initial LED luminaire efficacy	Initial luminous flux
	PSU-E C ELP3 WH P				
94579400	DN470B LED30S/830 PSED-VLC-E C WH P	(0.43, 0.40) SDCM <3.5	3000 K	126 lm/W	2900 lm
38475300	DN473B LED20S/840 PSU-E C PCC WH	(0.38, 0.38) SDCM <5	4000 K	119 lm/W	2000 lm
79333300	DN471B LED20S/830 PSED-VLC-E C WH P	(0.43, 0.40) SDCM <3.5	3000 K	120 lm/W	2025 lm
79334000	DN471B LED20S/840 PSD-VLC-E C WH P	(0.38, 0.38) SDCM <3.5	4000 K	125 lm/W	2100 lm
79337100	DN462B LED11S/830 PSED-VLC-E C PCO WH	(0.43, 0.40) SDCM <3.5	3000 K	109 lm/W	1100 lm
79348700	DN472B LED20S/840 PSU-E PCO WH	(0.38, 0.38) SDCM <3.5	4000 K	108 lm/W	2100 lm

Initial Performance (IEC Compliant) (2/2)

Order Code	Full Product Name	Initial input power
38463000	DN462B LED11S/840 PSU-E C PCC WH	9.8 W
79320300	DN460B LED11S/840 PSU-E C WH P	9.8 W
38470800	DN472B LED20S/830 PSE-E C PCC WH	16.8 W
38471500	DN472B LED20S/840 PSE-E C PCC WH	16.8 W
79328900	DN470B LED20S/840 PSU-E C WH P	16.8 W
79330200	DN470B LED20S/840 PSD-VLC-E C WH P	16.8 W
79352400	DN470B LED20S/840 PSU-E C ELP3 WH P	16.8 W

Order Code	Full Product Name	Initial input power
94579400	DN470B LED30S/830 PSED-VLC-E C WH P	23 W
38475300	DN473B LED20S/840 PSU-E C PCC WH	16.8 W
79333300	DN471B LED20S/830 PSED-VLC-E C WH P	16.8 W
79334000	DN471B LED20S/840 PSD-VLC-E C WH P	16.8 W
79337100	DN462B LED11S/830 PSED-VLC-E C PCO WH	10 W
79348700	DN472B LED20S/840 PSU-E PCO WH	19.4 W

Light Technical

Order Code	Full Product Name	Optical cover/lens acc. type
38463000	DN462B LED11S/840 PSU-E C PCC WH	No
79320300	DN460B LED11S/840 PSU-E C WH P	No
38470800	DN472B LED20S/830 PSE-E C PCC WH	No
38471500	DN472B LED20S/840 PSE-E C PCC WH	No
79328900	DN470B LED20S/840 PSU-E C WH P	No
79330200	DN470B LED20S/840 PSD-VLC-E C WH P	No
79352400	DN470B LED20S/840 PSU-E C ELP3 WH P	No

Order Code	Full Product Name	Optical cover/lens acc. type
94579400	DN470B LED30S/830 PSED-VLC-E C WH P	-
38475300	DN473B LED20S/840 PSU-E C PCC WH	No
79333300	DN471B LED20S/830 PSED-VLC-E C WH P	No
79334000	DN471B LED20S/840 PSD-VLC-E C WH P	No
79337100	DN462B LED11S/830 PSED-VLC-E C PCO WH	No
79348700	DN472B LED20S/840 PSU-E PCO WH	No

