

GearUnits – for high-power floodlighting

High Power GearUnits

Philips is one of the few companies able to provide total floodlight system solutions comprising all necessary elements – floodlight, lamp source and control gear unit. Our innovative high-power GearUnits are designed to meet our customers' need for a compact gear solution that is completely ready for installation. The pre-wired high-power control gear units are intended for use in combination with floodlights that are suitable for high-wattage HID lamps and cannot integrate electrical components because of limited space or high temperatures. A gear unit contains all electrical components (ballast, ignitors, capacitors), wiring and terminal blocks needed to ensure initial lamp ignition and proper operation of the lamp in stabilized current. The electromagnetic high-power GearUnits are available in both IP20 (ECB330) and IP65 (ECP330) versions. Within the GearUnits family there is also an electronic flicker-free ballast version (ECM330) available in IP20, which is suitable for the MVF403 MHN-LA 1000 W and MVF404 MHN-SE HO 2000 W ArenaVision floodlights. The ArenaVision floodlight family is specially designed for TV broadcasts from indoor and outdoor sports facilities. Electronic-ballast GearUnits completely eliminate the flicker effect, thereby guaranteeing perfect images filmed with super-slow-motion cameras.

Benefits

- Guarantees reliable functioning of total Philips floodlight system
- Compact in size and ready for easy installation
- Serviceable – all components are easily replaceable independently

Features

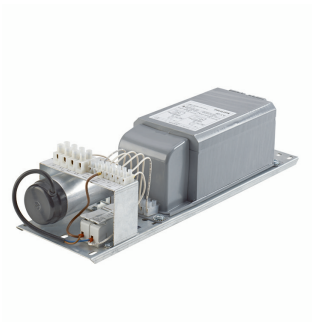
- Sufficiently high power factor
- Available in IP20 and IP65 versions
- Suitable for 2000, 1000, 600 and 2x400/600 W lamps in Philips floodlights
- Flicker-free light with electronic-ballast version for super-slow-motion cameras

High Power GearUnits

Application

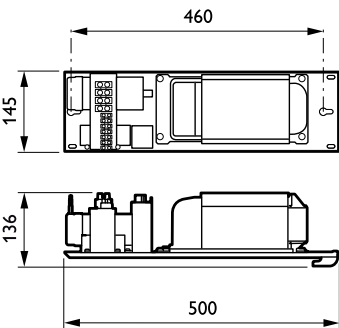
- IP20 version: indoor, inside cabinets only
- IP65 version: for outdoor use

Versions



OPPR ECB330i 0001

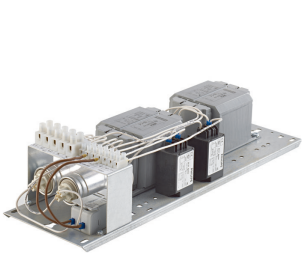
Dimensional drawing



Product details



OPDP_ECB330i_0007-Detail
photo



OPDP_ECB330i_0001-Detail
photo

High Power GearUnits

Product details



OPDP_ECB330i_0011-Detail
photo



OPDP_ECB330i_0013-Detail
photo

