

GearUnits – for high-power floodlighting

High Power GearUnits

Philips is one of the few companies able to provide total floodlight system solutions comprising all necessary elements – floodlight, lamp source and control gear unit. Our innovative high-power GearUnits are designed to meet our customers' need for a compact gear solution that is completely ready for installation. The pre-wired high-power control gear units are intended for use in combination with floodlights that are suitable for high-wattage HID lamps and cannot integrate electrical components because of limited space or high temperatures. A gear unit contains all electrical components (ballast, ignitors, capacitors), wiring and terminal blocks needed to ensure initial lamp ignition and proper operation of the lamp in stabilized current. The electromagnetic high-power GearUnits are available in both IP20 (ECB330) and IP65 (ECP330) versions. Within the GearUnits family there is also an electronic ballast version (ECM330) available in IP20, which is suitable for the MVF403 MHN-LA 1000 W and MVF404 MHN-SE HO 2000 W ArenaVision floodlights. The ArenaVision floodlight family is specially designed for TV broadcasts from indoor and outdoor sports facilities. Electronic-ballast GearUnits completely eliminate the flicker effect, thereby guaranteeing perfect images filmed with super-slow-motion cameras.

Benefits

- Guarantees reliable functioning of total Philips floodlight system
- Compact in size and ready for easy installation
- Serviceable – all components are easily replaceable independently

Features

- Sufficiently high power factor
- Available in IP20 and IP65 versions
- Suitable for 2000, 1000, 600 and 2x400/600 W lamps in Philips floodlights
- Flicker-free light with electronic-ballast version for super-slow-motion cameras

High Power GearUnits

Application

- IP20 version: indoor, inside cabinets only
- IP65 version: for outdoor use

Specifications

Type	ECB330 (IP20 version)
	ECP330 (IP65 version)
Applicable light sources	HID:
	- MASTER MHN- SE 2000W HO
	- MASTER MHN-LA / X528 / 1000, 2000 W
	- MASTER MHN-FC / Double ended / 1000, 2000 W
	- HPI-T / E40 / 1000, 2000 W
	- SON-T / E40 / 600, 1000 W
	- 2 x SON-T / E40 / 400, 600 W
	- 2 x HPI-TP / E40 / 400 W
Ballast (integrated)	Electro magnetic, impregnated

Mains voltage	230 or 240 V / 50 Hz
	380-400-415-430 V / 50 Hz
	360-380-400-415 V / 50 Hz
	Note: mains supply voltage fluctuation not more than -8% and +6% from the rated voltage of the ballast
Ignitor	Semi-parallel (SP) for limited distance between floodlight (SON-T400, 600, 1000 W versions) and gear unit application or parallel (PA) ignitors supplied on the gear unit.
Capacitor	A set of parallel capacitors is used to obtain a power factor of the lamp/ballast circuit up to 0.90

Specifications

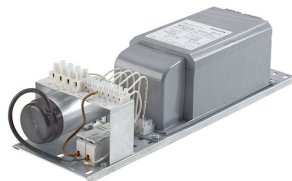
Cable gland	Applicable only for ECP330 IP65 versions:
	1-lamp versions:
	- 2 x M25 cable glands (one of them blinded) for mains IN/OUT (through-wiring) suitable for mains supply cable Ø 13 to 18 mm (i.e. 3x2.5 to 5x6 mm² rigid or 5x4 mm² soft)
	- 1 x M20 for lamp supply cable Ø 10 to 14 mm
	2-lamp versions:
Options	- 2 x M25 cable glands for individual mains supply per lamp circuit (no through-wiring)
	- 1 x M25 for cable Ø 13 to 18 mm accepting 1 cable of 5x6 mm² rigid or 5x4 mm² soft for individual lamp supply
	Fuse (FU)
	Note: fuse option applies as 1-phase protection for 230/240 V versions and 2-phase protection for 360-430 V versions
Materials and finishing	Gear tray (IP20 version): pre-galvanized steel
	Housing (IP65 version): aluminum extrusion and die-casting aluminum endcaps, painted in grey

Installation	Ready for mains connection, only cabling needs to be installed between gear unit and luminaire
	Connectors made with screw terminals live, neutral, earth for mains supply
	Mains and lamp connections are clearly marked and to be used for cable cores up to 16 mm² for mains connections and up to 4 mm² for lamp connections
	Ambient temperature: min. -30°C / max. 45°C indoor, 55°C outdoor for IP65 version (ECP330)
Maintenance	All components are easily replaceable independently (i.e. ballast, ignitor, capacitors), except gearbox version ballast is not possible to replace since it is fixed inside gear unit housing

Versions



Předřadníková skříň ECM330



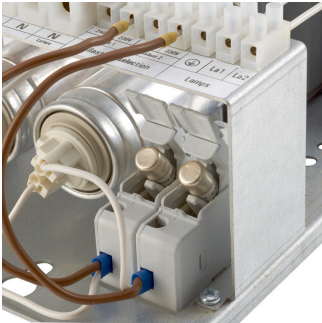
GearUnits - MASTER MHN-SA - 2000 W



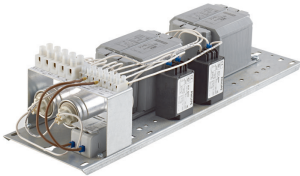
GearUnits - MASTER MHN-SA - 2000 W

High Power GearUnits

Product details



OPDP_ECB330i_0007-Detail
photo



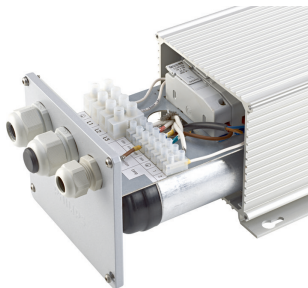
OPDP_ECB330i_0001-Detail
photo



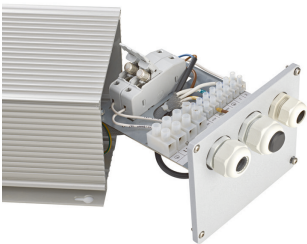
OPDP_ECB330i_0011-Detail
photo



OPDP_ECB330i_0013-Detail
photo



OPDP_ECB330i_0005-Detail
photo



OPDP_ECB330i_0009-Detail
photo

General Information	
CE mark	CE mark
Number of light sources	1

Approval and Application

High Power GearUnits

Order Code	Full Product Name	Mech. impact protection code	Ingress protection code
910505016323	ECM330 MHN-SEH2000W 277-480V	IK10	IP20
910925258212	ECB330 MHN-SA2000W 380-430V FU	IK10	IP20

Order Code	Full Product Name	Mech. impact protection code	Ingress protection code
910925725812	ECB330 MHN-LA1000W 230-240V FU	-	IP20
910925726312	ECP330 SON-T600W 230-240V	IK10	IP65

Operating and Electrical

Order Code	Full Product Name	Input Frequency	Input Voltage
910505016323	ECM330 MHN-SEH2000W 277-480V	50 to 60 Hz	277 to 480 V
910925258212	ECB330 MHN-SA2000W 380-430V FU	50 to 60 Hz	380 to 430 V

Order Code	Full Product Name	Input Frequency	Input Voltage
910925725812	ECB330 MHN-LA1000W 230-240V FU	50 Hz	230 to 240 V
910925726312	ECP330 SON-T600W 230-240V	50 Hz	230 to 240 V

General Information

Order Code	Full Product Name	Lamp family code	Lamp power	Product Family Code
910505016323	ECM330 MHN-SEH2000W 277-480V	MHN-LA	2000 W	ECM330
910925258212	ECB330 MHN-SA2000W 380-430V FU	MHN-SA	2000 W	ECB330

Order Code	Full Product Name	Lamp family code	Lamp power	Product Family Code
910925725812	ECB330 MHN-LA1000W 230-240V FU	MHN-LA	1000 W	ECB330
910925726312	ECP330 SON-T600W 230-240V	SON-T	600 W	ECP330

