



# Wireless lighting control for a very pleasant workplace

## SmartBalance Suspended, SpaceWise

With Philips SpaceWise, customers can enjoy the very real benefits of controls – e.g. energy savings, visual comfort and personal control – without having to create a wired infrastructure.

### Benefits

- The easiest way to enjoy visual comfort and energy savings, without any exposed data cables
- Easy to commission via remote control
- Freedom and flexibility in working spaces with connected luminaires

### Features

- Luminaires can be connected with SmartBalance Free Floor Standing
- Luminaires have a wireless receiver, or are connected to a wireless receiver as slave luminaires
- Using a remote control, luminaires can be easily connected in a network
- Within the network, zones can be created where all luminaires in a zone behave in the same way
- All luminaires in the room/open-plan space can be linked in a network
- The wireless network can be connected to the Building Management System

### Application

- Office/connected lighting

### Specifications

## SmartBalance Suspended, SpaceWise

<b>Type</b>	SP480P (direct lighting version) SP482P (direct / indirect lighting version)
<b>Light source</b>	Non-replaceable LED module
<b>Power (+/-10%)</b>	SP480P: 33.5 W (4000 K / ACC-MLO) SP482P: 37 W (4000 K / ACC-MLO)
<b>Luminous flux</b>	3500 or 4000 lm
<b>Correlated Color</b>	4000 K
<b>Temperature</b>	
<b>Color Rendering Index</b>	>80
<b>Lumen maintenance at median useful life*</b>	L85
<b>50000 h</b>	
<b>Control gear failure rate at median useful life</b>	5%
<b>50000 h</b>	
<b>Performance Ambient Temperature Tq</b>	+25 °C
<b>Operating temperature range</b>	+10 to +35 °C

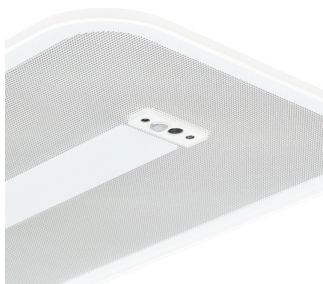
<b>Driver</b>	Built-in
<b>Mains voltage</b>	220-240 V / 50-60 Hz
<b>Dimming</b>	Dimmable
<b>Controls system input</b>	DALI
<b>Options</b>	SpaceWise system can be used in combination with SmartBalance Free Floor Standing
<b>Material</b>	
	Housing: polycarbonate and sheet metal
	Cover / optic: PMMA or polycarbonate
<b>Color</b>	White (WH)
<b>Optic</b>	OLC micro-lens optic made of clear acrylic (ACC-MLO)
<b>Connection</b>	Push-in connector (PI)
<b>Maintenance</b>	Optical module sealed for life; no internal cleaning required
<b>Installation</b>	
	Suspended mounting with a set of single steel-wire suspensions including a power cord, 170 cm
	Suspension set SM1: set with twin metal tubes
	Fast fine adjustment with clutch device (Reutlinger)
	Through-wiring possible

### Versions



SmartBalance Suspended  
SpaceWise SP480P luminaire,  
direct lighting version

### Product details



SmartBalance\_Suspended\_Space  
Wise-SP480P\_SP482P\_SWZ-  
DP02

# SmartBalance Suspended, SpaceWise

## Application Conditions

Ambient temperature range	+10 to +40 °C
Maximum dim level	1%
Suitable for random switching	Yes

## Approval and Application

Mech. impact protection code	IK02
Ingress protection code	IP40

## Controls and Dimming

Dimmable	Yes
----------	-----

## Operating and Electrical

Input Voltage	220 to 240 V
---------------	--------------

## General Information

Cap-Base	-
CE mark	CE mark
Protection class IEC	Safety class I
Optical cover/lens type	Acrylate micro-lens optic clear
Driver included	Yes
Emergency lighting	-
ENEC mark	ENEC plus mark
Flammability mark	For mounting on normally flammable surfaces
Gear	-
Glow-wire test	Temperature 650 °C, duration 5 s
Embedded control	SpaceWise enabled
Light source replaceable	No
Number of gear units	1 unit
Number of light sources	1 pc
Optic type	-
Service tag	Yes
UL mark	-

## Initial Performance (IEC Compliant)

Initial chromaticity	(0.38, 0.38) SDCM <3
Init. Corr. Color Temperature	4000 K
Luminous flux tolerance	+/-10%

## Mechanical and Housing

Color	White
Geometry	Width 0.24 m, length 1.34 m

## General Information

Order Code	Full Product Name	Beam angle of light source	Lamp family code	Product Family Code
910504101203	SP480P LED355/840 PSD ACC-MLO SWZ SM1	- °	LED355	SP480P
910504101303	SP482P LED405/840 PSD ACC-MLO SWZ SM1	-	LED405	SP482P
910504109603	SP480P LED355/840 PSD ACC-MLO SWZ SM2	- °	LED355	SP480P
910504109703	SP482P LED405/840 PSD ACC-MLO SWZ SM2	- °	LED405	SP482P

## Initial Performance (IEC Compliant)

## SmartBalance Suspended, SpaceWise

Order Code	Full Product Name	Init. Color Rendering Index	Initial LED luminaire efficacy	Initial luminous flux	Initial input power
910504101203	SP480P LED35S/840 PSD ACC-MLO SWZ SM1	≥80	111 lm/W	3500 lm	31.5 W
910504101303	SP482P LED40S/840 PSD ACC-MLO SWZ SM1	≥80	119 lm/W	4100 lm	34.5 W
910504109603	SP480P LED35S/840 PSD	>80	111 lm/W	3500 lm	31.5 W

Order Code	Full Product Name	Init. Color Rendering Index	Initial LED luminaire efficacy	Initial luminous flux	Initial input power
	ACC-MLO SWZ SM2				
910504109703	SP482P LED40S/840 PSD ACC-MLO SWZ SM2	>80	119 lm/W	4100 lm	34.5 W

