



Double Ended Linear

Double Ended Linear

High-quality white light with superior lumen performance. Halogen Double Ended lamps provide bright, white light for work lights and security lighting. Rugged construction for busy work sites. Offered in several lengths to meet most application needs. High lumen output provides light where you need it.

Benefits

- Provides high lumen output.
- Available in several lengths to meet specific applications.

Features

- Bright, white light.
- Available in wide range of wattages.
- Recessed Single Contact (RSC).
- Available in 100, 150, 250, 300, and 500 watts.

Application

- Ideal for work lights, torchieres, sconces, outdoor security fixtures.

Versions

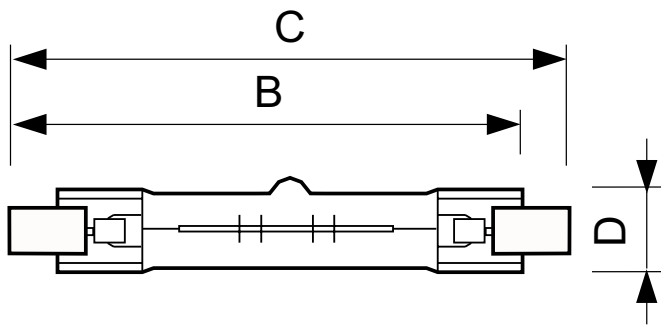


R7s/10, T11/T12

R7s

Double Ended Linear

Dimensional drawing



Product	D (max)	B (max)	B	B (min)	C (max)
Double Ended Linear BC300T3Q/CL/2CD/TP	12 mm	115.8 mm	114.2 mm	112.6 mm	117.6 mm
Double Ended Linear BC500T3Q/CL/2CD/TP	12 mm	115.8 mm	114.2 mm	112.6 mm	117.6 mm

Product
Double Ended Linear BC100T3Q/CL/1CD

Operating and Electrical	
Voltage (Nom)	120 V
Starting Time (Nom)	0.0 s
General Information	
Cap-Base	R7S
Nominal Lifetime (Nom)	2000 h
Operating Position	Universal
Rated Lifetime (Hours)	2000 h
Luminaire Design Requirements	
Bulb Temperature (Max)	900 °C
Mechanical and Housing	
Bulb Finish	Clear
Bulb Shape	T3

Approval and Application

Order Code	Full Product Name	Energy Efficiency Label (EEL)
112128	Double Ended Linear BC100T3Q/CL/1CD	D
512103	Double Ended Linear BC300T3Q/CL/2CD/TP	E
512129	Double Ended Linear BC500T3Q/CL/2CD/TP	D

Controls and Dimming

Order Code	Full Product Name	Dimmable
112128	Double Ended Linear BC100T3Q/CL/1CD	Yes
512103	Double Ended Linear BC300T3Q/CL/2CD/TP	-

Order Code	Full Product Name	Dimmable
512129	Double Ended Linear BC500T3Q/CL/2CD/TP	Yes

Operating and Electrical

Double Ended Linear

Order Code	Full Product Name	Lamp Current (Nom)	Power (Rated) (Nom)
112128	Double Ended Linear BC100T3Q/CL/1CD	0.83 A	100.0 W
512103	Double Ended Linear BC300T3Q/CL/2CD/TP	2.50 A	300 W

Order Code	Full Product Name	Lamp Current (Nom)	Power (Rated) (Nom)
512129	Double Ended Linear BC500T3Q/CL/2CD/TP	4.17 A	500 W

Light Technical

Order Code	Full Product Name	Correlated Color Temperature (Nom)	Color Rendering Index (Nom)	Luminous Efficacy (rated) (Nom)	Luminous Flux (Nom)
112128	Double Ended Linear BC100T3Q/CL/1C D	2900 K	100	17.5 lm/W	1750 lm
512103	Double Ended Linear	-	-	17.3 lm/W	5200 lm

Order Code	Full Product Name	Correlated Color Temperature (Nom)	Color Rendering Index (Nom)	Luminous Efficacy (rated) (Nom)	Luminous Flux (Nom)
	BC300T3Q/CL/2C D/TP				
512129	Double Ended Linear BC500T3Q/CL/2C D/TP	2900 K	100	19.0 lm/W	9500 lm

