



Product Description

Certaline Halogen Transformers

Electronic halogen transformer for low voltage halogen lamps the range include Certaline 60W 230-240V and Certaline105W 230-240V

Benefits

- Suitable for independent operation thanks to robust strain-relief
- VDE, SELV, CE and EMC-compliant

Features

- Extremely compact dimensions for the 60 W model
- Three levels of protection: over-voltage, over-temperature and short circuit
- Long lifetime: 20,000 hours
- Dimming possible with Philips-approved Trailing Edge dimmers
- Possible to connect two lamps for 105 W, and three lamps for 150 W

Application

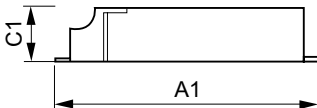
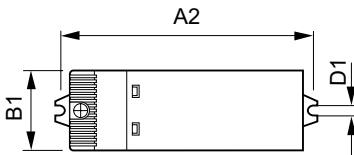
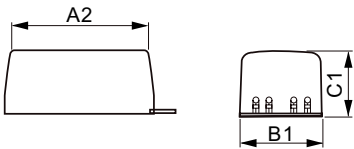
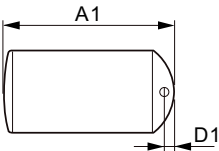
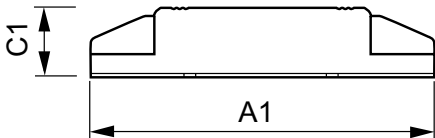
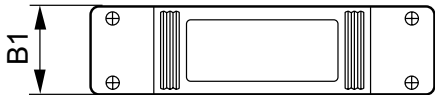
- Indoor residential use including living rooms and decorative and accent lighting
- Professional applications including retail, offices, conference rooms and exhibitions

Certaline Halogen Transformers

Versions



Dimensional drawing



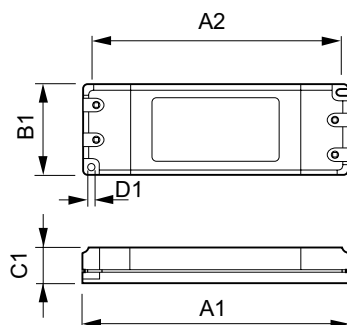
Product	C1	A1	B1
Certaline 150W 230-240V 50/60Hz	36.0 mm	180.0 mm	46.0 mm

Product	C1	A1	B1
ET-C 60	31.0 mm	76.0 mm	38.0 mm

Product	C1	A1	B1
Certaline 60W 230-240V 50/60Hz	22.0 mm	107.0 mm	32.0 mm

Certaline Halogen Transformers

Dimensional drawing



Product	C1	A1	B1
Certaline 105W 230-240V 50/60Hz	19.5 mm	146.0 mm	50.0 mm

Operating and Electrical

Input Frequency	50 to 60 Hz
-----------------	-------------

General Information

Lamp Type	LV Halogen
-----------	------------

Operating and Electrical

Order Code	Full Product Name	Input Voltage
913700633891	Certaline 60W 230-240V 50/60Hz	230 to 240 V
913700633991	Certaline 105W 230-240V 50/60Hz	230 to 240 V

Order Code	Full Product Name	Input Voltage
913700634091	Certaline 150W 230-240V 50/60Hz	230 to 240 V
913710032060	ET-C 60	220 to 240 V

General Information

Order Code	Full Product Name	Number Of Lamps
913700633891	Certaline 60W 230-240V 50/60Hz	1 piece/unit
913700633991	Certaline 105W 230-240V 50/60Hz	2 piece/unit

Order Code	Full Product Name	Number Of Lamps
913700634091	Certaline 150W 230-240V 50/60Hz	3 piece/unit
913710032060	ET-C 60	1 piece/unit

System characteristics

Order Code	Full Product Name	Rated Ballast-Lamp Power
913700633891	Certaline 60W 230-240V 50/60Hz	20-60 W
913700633991	Certaline 105W 230-240V 50/60Hz	35-105 W

Order Code	Full Product Name	Rated Ballast-Lamp Power
913700634091	Certaline 150W 230-240V 50/60Hz	50-150 W
913710032060	ET-C 60	20-60 W

