

# Product Description

## HF-Basic II for TL-D lamps

Slim, lightweight, High Frequency electronic ballasts for TL-D and PL-L fluorescent lamps, for applications with low switching frequency, based on EII technology

### Benefits

- Savings of 25% energy compared to electromagnetic "C-type" ballasts
- Instant start gives "direct" light
- HF-operation eliminates eye strain as caused by electromagnetic ballasts
- No igniter/capacitor needed, simplified wiring compared to Electromagnetic solutions
- The HF-B TLD range has a robust design and meets internal safety, EMC and Immunity tests
- Offers the flexibility for simple wiring release possibility
- Including safety approbation via an external test-house covering IEC/EN 61347
- Automatic restart (after voltage dip or lamp exchange) ensures easy operation and hassle free re-lamping

### Features

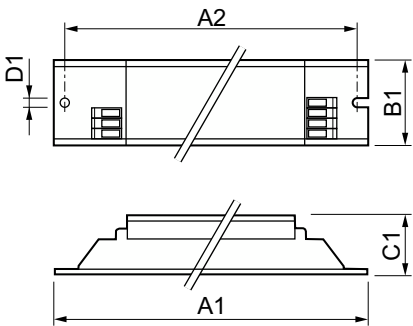
- Energy efficient CELMA EEI = A2
- Complying to CE, VDE-EMC, and ENEC
- 50.000 hour lifetime at 75°C (Tc max) and >4.000 on/off switches on one lamp
- Active power factor correction, smart power
- Instant start, flicker-free start
- High power factor >0.96 with THD <15%
- Required battery voltage for guaranteed ignition 198 - 254 V
- Required battery voltage for burning lamps 176 - 254 V
- Nominal light output is obtained at the DC voltage of 220 - 240 V
- EMC compliant to EN 55015 2006 + A1 2007
- Universal connector WAGO 251

# HF-Basic II for TL-D lamps

## Application

- Ideal for applications with long lamp burning hours, for example:
- Department stores, shops, supermarkets, industrial premises
- Offices and corridors with low switching frequency
- Airports, railway stations
- Outdoor lighting; in general suitable for Class I applications
- Installations with emergency back-up according to VDE 0108-100 / EN 60598-2-22 with re-ignition <0.5 s

## Dimensional drawing



Product	D1	C1	A1	A2	B1
HF-B 136/236 TL-D EII 220-240V 50/60Hz	4.2 mm	28.0 mm	280.0 mm	265.0 mm	30.0 mm
HF-B 158/258 TL-D EII 220-240V 50/60Hz	4.2 mm	28.0 mm	280.0 mm	265.0 mm	30.0 mm

Operating and Electrical	
Input Frequency	50 to 60 Hz
Input Voltage	220 to 240 V
Line Frequency	50 to 60 Hz
Mechanical and Housing	
Housing	-
Approval and Application	
Energy Efficiency Index	A2

## Operating and Electrical

Order Code		Full Product Name	Number of Products on MCB (16A Type B) (Nom)
93158030	HF-B 136/236 TL-D EII 220-240V 50/60Hz	28	



# HF-Basic II for TL-D lamps

		Number of Products on MCB
Order Code	Full Product Name	(16A Type B) (Nom)
93160330	HF-B 158/258 TL-D EII 220-240V 50/60Hz	12

