

# Product Description

## HF-Performer Intelligent for TL5 HE/HO lamps

Intelligent, flat, slim, lightweight high-frequency electronic ballast for TL5 fluorescent lamps

### Benefits

- Maximum reliability in system operation, and flexibility for designers, operators and facility managers in terms of stock-keeping management
- Multi-power technology for precise operation of multiple lamp types of various wattages
- Optimized for high maintenance efficiency and reliability: 5-year warranty

### Features

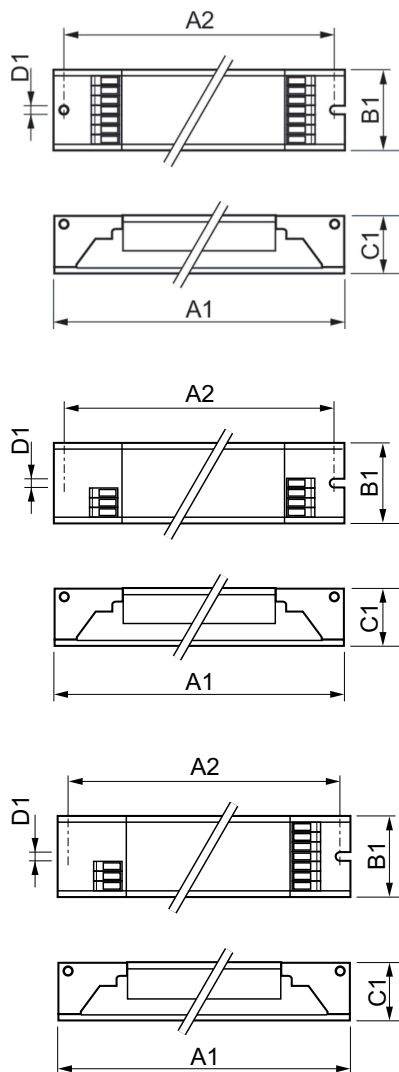
- Highest CELMA Energy Efficiency Index A2 BAT
- Complies with CE, ENEC, EL, VDE-EMC, CCC marks of conformity
- Average nominal service lifetime over 100,000 hours (at Ta 50 °C) with a failure rate  $\leq 0.1\%$  per 1,000 hours
- Optimized lamp preheating for a minimum of 50,000 On/Off switch operations without lamp replacement

### Application

- Ideal for applications with high switching frequency, typical application areas include:
- Use with infrared remote control systems (e.g. movement detection)
- Department stores, shops, supermarkets, hotels, hospitals, office buildings, industrial premises
- Airports, railway stations
- Outdoor lighting; in general suitable for Class I applications
- Suitable for installations with emergency back-up, according to VDE 0108-100 / EN 60598-2-22 with re-ignition  $< 0.5$  s

# HF-Performer Intelligent for TL5 HE/HO lamps

## Dimensional drawing



Product	D1	C1	A1	A2	B1
HF-Pi 3/4 14/24 TL5/PL-L EII 220-240V	4.2 mm	22 mm	360 mm	350 mm	30 mm

Product	D1	C1	A1	A2	B1
HF-Pi 1 14/21/24/39 TL5 EII 220-240V	4.2 mm	22 mm	360 mm	350 mm	30 mm
HF-Pi 1 28/35/49/54 TL5 EII 220-240V	4.2 mm	22 mm	360 mm	350 mm	30 mm
HF-Pi 1 28/35/49/80 TL5 EII	4.2 mm	22 mm	360 mm	350 mm	30 mm

Product	D1	C1	A1	A2	B1
HF-Pi 2 14/21/24/39 TL5 EII 220-240V	4.2 mm	22 mm	360 mm	350 mm	30 mm
HF-Pi 2 28/35/49/54 TL5 EII 220-240V	4.2 mm	22 mm	360 mm	350 mm	30 mm
HF-Pi 2 28/35/49/80 TL5 EII	4.2 mm	22 mm	425 mm	415 mm	30 mm

### Operating and Electrical

Input Frequency	50 to 60 Hz
Input Voltage	220 to 240 V
Line Frequency	50 to 60 Hz

### Approval and Application

Energy Efficiency Index	A2 BAT
-------------------------	--------

## Operating and Electrical

Order Code	Full Product Name	Number of Products on MCB (16A Type B) (Nom)
91494130	HF-Pi 1 14/21/24/39 TL5 220-240V	18
91496530	HF-Pi 1 28/35/49/54 TL5 220-240V	18
91500930	HF-Pi 2 14/21/24/39 TL5 220-240V	12
91502330	HF-Pi 2 28/35/49/54 TL5 220-240V	12

Order Code	Full Product Name	Number of Products on MCB (16A Type B) (Nom)
86249200	HF-Pi 1 28/35/49/80 TL5 EII 220-240V	12
86250800	HF-Pi 2 28/35/49/80 TL5 EII 220-240V	8
88775400	HF-Pi 3/4 14/24 TL5/PL-L EII 220-240V	12

# HF-Performer Intelligent for TL5 HE/HO lamps

## Mechanical and Housing

Order Code	Full Product Name	Housing
91494130	HF-Pi 1 14/21/24/39 TL5 220-240V	L360x30x22
91496530	HF-Pi 1 28/35/49/54 TL5 220-240V	L360x30x22
91500930	HF-Pi 2 14/21/24/39 TL5 220-240V	L360x30x22
91502330	HF-Pi 2 28/35/49/54 TL5 220-240V	L360x30x22

Order Code	Full Product Name	Housing
86249200	HF-Pi 1 28/35/49/80 TL5 EII 220-240V	L360x30x22
86250800	HF-Pi 2 28/35/49/80 TL5 EII 220-240V	L 425x30x22
88775400	HF-Pi 3/4 14/24 TL5/PL-L EII 220-240V	L360x30x22

