



# Dimming – a next step in energy saving

## HF-Regulator Intelligent Touch DALI for PL-T/C and TL5C

Intelligent high-frequency electronic dimming ballast, using DALI (Digital Addressable Lighting Interface according to IEC62386) or Touch and Dim push-button protocol for fluorescent lamps. Features Corridor Mode, programmable with Philips MultiOne. High-frequency operation improves light quality and lamp lifetime. Pre-empts upcoming legislation as it meets A1BAT requirements.

### Benefits

- Programmed start: flicker-free ignition in 0.5 seconds and striation-free operation, no stroboscopic effects. Preheating the lamp electrodes enables the lamps to be switched on and off without reducing life
- Smart power ensures constant light, independent of mains fluctuations, and dimming from 3 to 100%
- Protected against excessive mains voltages, incorrect connections and incorrect lamp use

### Features

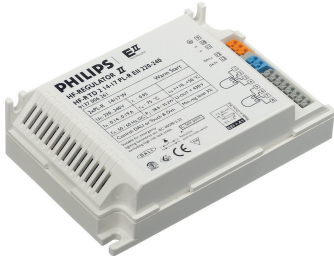
- Extremely low stand-by losses, controlled cut-off for dimming levels above 80%
- Combined with controls, additional energy savings can be achieved
- Stop circuit is activated within 5 seconds of lamp failure (safety stop), and ballast resets automatically after lamp replacement
- HF operation improves light quality and lamp lifetime
- Programmable Corridor Mode
- Compliant with European and Asian norms and suitable for emergency lighting systems

### Application

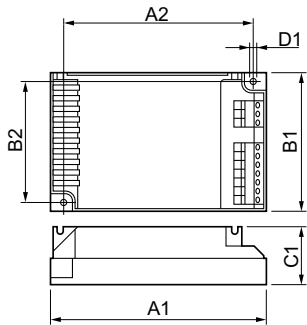
- Indoor general and task lighting applications in combination with lighting control systems (personal control, daylight linking and/or movement detection)

# HF-Regulator Intelligent Touch DALI for PL-T/C and TL5C

## Versions



## Dimensional drawing



### Product

HF-Ri TD 2 26-42 PL-T/C E+

HF-Ri TD 1 26-42 PL-T/C E+

### Approval and Application

Energy Efficiency Index A1 BAT

### Operating and Electrical

Input Frequency 50 to 60 Hz

Input Voltage 195-240 V

### General Information

Lamp Type PL-T/C

### Mechanical and Housing

Housing L 123x79x33

### System characteristics

Rated Ballast-Lamp Power 26-42 W

## General Information

Order Code	Full Product Name	Number Of Products On	
		MCB (16A Type B) (Nom)	Number Of Lamps
24167600	HF-Ri TD 1 26-42 PL-T/C E+	28	1 piece/unit

Order Code	Full Product Name	Number Of Products On	
		MCB (16A Type B) (Nom)	Number Of Lamps
24169000	HF-Ri TD 2 26-42 PL-T/C E+	12	2 piece/unit

## System characteristics

## HF-Regulator Intelligent Touch DALI for PL-T/C and TL5C

Order Code	Full Product Name	Lamp Power	Lamp Power	Lamp Power
		On PL-T	On PL-T/C	On TL5C
24167600	HF-Ri TD 1 26-42 PL-T/C	31/41 W	25 W	23/38.5 W
	E+			

Order Code	Full Product Name	Lamp Power	Lamp Power	Lamp Power
		On PL-T	On PL-T/C	On TL5C
24169000	HF-Ri TD 2 26-42 PL-T/C	62/82 W	50 W	46/77/61 W
	E+			

