

Most reliable standard, energy-efficient solution

HF-Selectalume II for TL5 lamps

HF-Selectalume II TL5 is the most cost-effective, reliable and outstanding solution for fluorescent lamps. These ballasts are part of an overall high-efficiency lighting system that may help you or your customers to achieve any international or local energy code you need to comply with. HF-Selectalume II TL5 ballasts are the ideal choice for a broad range of new construction and retrofit applications within the commercial sector, including general surface mounting or office lighting, parking garages, warehouses, waterproof and other applications.

Benefits

- Exceptional energy efficiency with striation-reduction technology in lighting systems at lower temperatures
- Maximum reliability in system operation
- Multi-power technology for precise operation of multiple lamp types of various wattages

Features

- Highest CELMA Energy Efficiency Index A2 BAT*
- Complies with CE, ENEC, EL, CCC marks of conformity
- Average nominal service lifetime over 85,000 hours (at Ta 50°C) with a failure rate $\leq 0.1\%$ per 1,000 hours)
- Optimized lamp preheating for min. 50,000 On/Off switch operations without replacement of lamps

HF-Selectalume II for TL5 lamps

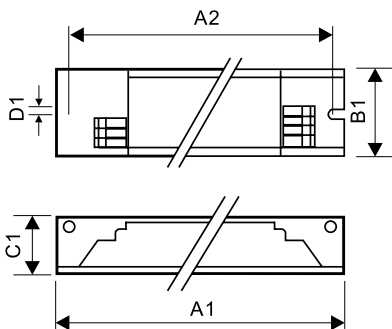
Application

- Suitable for DC operation and emergency lighting installations; full compliance with requirements for emergency lighting according to EN 61347-2-3 -annex J
- Extended lamp life in frequent-switching applications, e.g. where occupancy sensors or motion detectors are used
- For luminaires of protection class I and protection class II used in office buildings, hospitals, supermarkets, department stores, industrial premises and schools

Versions



Dimensional drawing



A2

Product

HF-S 124-39 TL5 II 220-240V 50/60Hz

HF-S 3/414 TL5 II 220-240V 50/60Hz

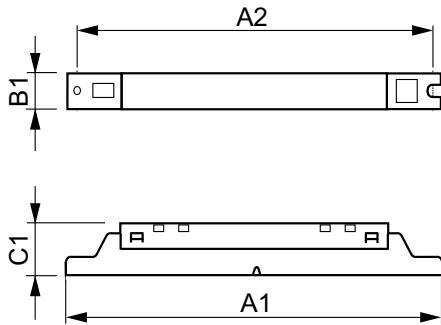
HF-S 3/424 TL5 II 220-240V 50/60Hz

HF-S 149 TL5 II 220-240V 50/60Hz

Product	D1	C1	A1	A2	B1
HF-S 154 TL5 II 220-240V 50/60Hz	4.1 mm	28.0 mm	280 mm	265 mm	30.0 mm
HF-S 2 24-39 TL5 II 220-240V 50/60Hz	4.1 mm	21.5 mm	280.0 mm	265.0 mm	30.0 mm
HF-S 249 TL5 II 220-240V 50/60Hz	4.1 mm	21.5 mm	280.0 mm	265.0 mm	30.0 mm
HF-S 254 TL5 II 220-240V 50/60Hz	4.1 mm	21.5 mm	360.0 mm	350.0 mm	30.0 mm

HF-Selectalume II for TL5 lamps

Dimensional drawing



Operating and Electrical	
Input Frequency	50 to 60 Hz
Input Voltage	220 to 240 V
Emergency Operation	
Emergency Ballast Lumen Factor (EBLF) (Nom)	100 %
General Information	
Lamp Type	TL5

Product	D1	C1	A1	A2	B1
HF-S 114-35 TL5 HE II 220-240V	4.2 mm	22.0 mm	360.0 mm	350.0 mm	30.0 mm
HF-S 214-35 TL5 HE II 220-240V	4.2 mm	22.0 mm	360.0 mm	350.0 mm	30.0 mm

Approval and Application

Order Code	Full Product Name	Energy Efficiency Index
88335000	HF-S 3/414 TL5 II 220-240V 50/60Hz	A2/A2BAT
90558800	HF-S 149 TL5 II 220-240V 50/60Hz	A2 BAT
90560100	HF-S 249 TL5 II 220-240V 50/60Hz	A2 BAT
90561800	HF-S 154 TL5 II 220-240V 50/60Hz	A2 BAT
90562500	HF-S 254 TL5 II 220-240V 50/60Hz	A2 BAT

Order Code	Full Product Name	Energy Efficiency Index
93933000	HF-S 124/39 TL5 II 220-240V 50/60Hz	A2/A2BAT
93935400	HF-S 224/39 TL5 II 220-240V 50/60Hz	A2 BAT
93937800	HF-S 3/424 TL5 II 220-240V 50/60Hz	A2 BAT
75842600	HF-S 114-35 TL5 II 220-240V 50/60Hz	A2 BAT
75844000	HF-S 214-35 TL5 II 220-240V 50/60Hz	A2 BAT

General Information

Order Code	Full Product Name	Number Of Products On MCB (16A Type) B) (Nom)	Number Of Lamps
88335000	HF-S 3/414 TL5 II 220-240V 50/60Hz	28	3/4 piece/unit
90558800	HF-S 149 TL5 II 220-240V 50/60Hz	-	1 piece/unit
90560100	HF-S 249 TL5 II 220-240V 50/60Hz	12	2 piece/unit
90561800	HF-S 154 TL5 II 220-240V 50/60Hz	-	1 piece/unit
90562500	HF-S 254 TL5 II 220-240V 50/60Hz	-	2 piece/unit
93933000	HF-S 124/39 TL5 II 220-240V 50/60Hz	-	1 piece/unit
93935400	HF-S 224/39 TL5 II 220-240V 50/60Hz	-	2 piece/unit

Order Code	Full Product Name	Number Of Products On MCB (16A Type) B) (Nom)	Number Of Lamps
93937800	HF-S 3/424 TL5 II 220-240V 50/60Hz	15	3/4 piece/unit
75842600	HF-S 114-35 TL5 II 220-240V 50/60Hz	28	1 piece/unit
75844000	HF-S 214-35 TL5 II 220-240V 50/60Hz	28	2 piece/unit

Mechanical and Housing

HF-Selectalume II for TL5 lamps

Order Code	Full Product Name	Housing
88335000	HF-S 3/414 TL5 II 220-240V 50/60Hz	L 280x39x21.5
90558800	HF-S 149 TL5 II 220-240V 50/60Hz	L 280x30x21
90560100	HF-S 249 TL5 II 220-240V 50/60Hz	L 280x30x21
90561800	HF-S 154 TL5 II 220-240V 50/60Hz	L 280x30x21
90562500	HF-S 254 TL5 II 220-240V 50/60Hz	L 280x30x21

Order Code	Full Product Name	Housing
93933000	HF-S 124/39 TL5 II 220-240V 50/60Hz	L 280x30x21.5
93935400	HF-S 224/39 TL5 II 220-240V 50/60Hz	L 280x30x21.5
93937800	HF-S 3/424 TL5 II 220-240V 50/60Hz	L 280x39x21.5
75842600	HF-S 114-35 TL5 II 220-240V 50/60Hz	L360x30x22
75844000	HF-S 214-35 TL5 II 220-240V 50/60Hz	L360x30x22

System characteristics

Order Code	Full Product Name	Lamp Power On TL5	Lamp Power On TL5 HE	Rated
				Ballast-Lamp Power
88335000	HF-S 3/414 TL5 II 220-240V 50/60Hz	44.2/55.0 W	-	14 W
90558800	HF-S 149 TL5 II 220-240V 50/60Hz	51 W	-	49 W
90560100	HF-S 249 TL5 II 220-240V 50/60Hz	100.2 W	-	49 W
90561800	HF-S 154 TL5 II 220-240V 50/60Hz	54 W	-	54 W
90562500	HF-S 254 TL5 II 220-240V 50/60Hz	97.2 W	-	54 W

Order Code	Full Product Name	Lamp Power On TL5	Lamp Power On TL5 HE	Rated
				Ballast-Lamp Power
93933000	HF-S 124/39 TL5 II 220-240V 50/60Hz	23.5/38 W	-	24/39 W
93935400	HF-S 224/39 TL5 II 220-240V 50/60Hz	50/76 W	-	24/39 W
93937800	HF-S 3/424 TL5 II 220-240V 50/60Hz	68.5/85.0 W	-	24 W
75842600	HF-S 114-35 TL5 II 220-240V 50/60Hz	-	14.7/37.0 W	14-35 W
75844000	HF-S 214-35 TL5 II 220-240V 50/60Hz	-	28.5/71.0 W	14-35 W

