



The new generation of energy saving tube lighting

MASTER LEDtube InstantFit HF T8

The Philips MASTER LEDtube integrates a LED light source into a traditional fluorescent form factor. Its unique design creates a perfectly uniform visual appearance which cannot be distinguished from traditional fluorescent. The MASTER LEDtube Performance is the ideal solution for customers which have higher light requirements and the want to maximize value over lifetime.(need the longest lifetime). Full energy savings and TCO benefits.

Benefits

- Reduced operational cost thanks to lower energy consumption
- Lower maintenance cost thanks to 2-3 times longer lifetime than normal fluorescent tubes
- Fastest and easiest way to upgrade existing luminaire to LED technology; 100%-safe installation process

Features

- Only 50% energy consumption compared to fluorescent tubes
- Extra-long life of 50,000 hours
- Retrofit to existing T8 lamps on HF ballast installations
- No mercury

Application

- Parking lots / covered car parks
- Warehouses / coldrooms / signage
- Transport and distribution areas

MASTER LEDtube InstantFit HF T8

Warnings and Safety

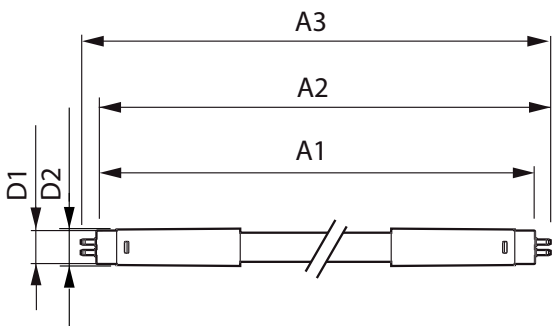
- NOTES: The overall energy efficiency and light distribution of any installation that uses these lamps are determined by the design of the installation.

Versions



G13

Dimensional drawing



Product	D1	D2	A1	A2	A3
MASTER LEDtube HF 600mm HO 8W865 T8	25.6 mm	28 mm	588.6 mm	595.7 mm	602.8 mm



MASTER LEDtube InstantFit HF T8

