



CoreLine Recessed – the clear choice for LED

CoreLine recessed

Whether for a new building or renovation of an existing space, customers want lighting solutions that provide quality of light and substantial energy and maintenance savings. The new CoreLine Recessed range of LED products can be used to replace functional luminaires in general lighting applications. The process of selecting, installing and maintaining is so easy – it's a simple switch. In addition, Coreline Recessed also provides the option of advanced connectivity and is ready to be connected to IoT based software applications such as Interact Pro.

Benefits

- Enables a simple switch from basic conventional fluorescent luminaires to LED luminaires
- Energy saving of over 45% compared to functional TL5 luminaires
- Slim design with a height of only 35 mm

Features

- Integrated LED technology
- Slim housing
- Surface-mounted version also available (also suitable for suspension)
- Integrated 3 hour emergency versions available
- Office compliant (UGR<19) flicker free and Non Office compliant versions available.

Application

- General lighting

CoreLine recessed

Warnings and Safety

- The product is IPX0 and as such is not protected against water ingress, so we strongly recommend that the environment in which the luminaire is to be installed is suitably checked
- If the above advice is not taken and the luminaires are subject to water ingress, Philips/Signify cannot guarantee safe failure and product warranty will become void

Versions

RC136B 31S_37S_43S/840 PSD
W30L120 OC_SPP



RC136B 31S_37S_43S/840 PSU
W60L60 OC_SPP



RC136B 28S_34S_40S/830 PSD
W60L60 OC_SPP



RC136B 31S_37S_43S/840 PSD
W60L60 OC_SPP



RC136B 28S_34S_40S/830 PSD
W30L120 OC_SPP



RC136B 28S_34S_40S/830 PSU
W60L60 NOC_SPP



RC136B 31S_37S_43S/840 PSU
W60L60 NOC_SPP

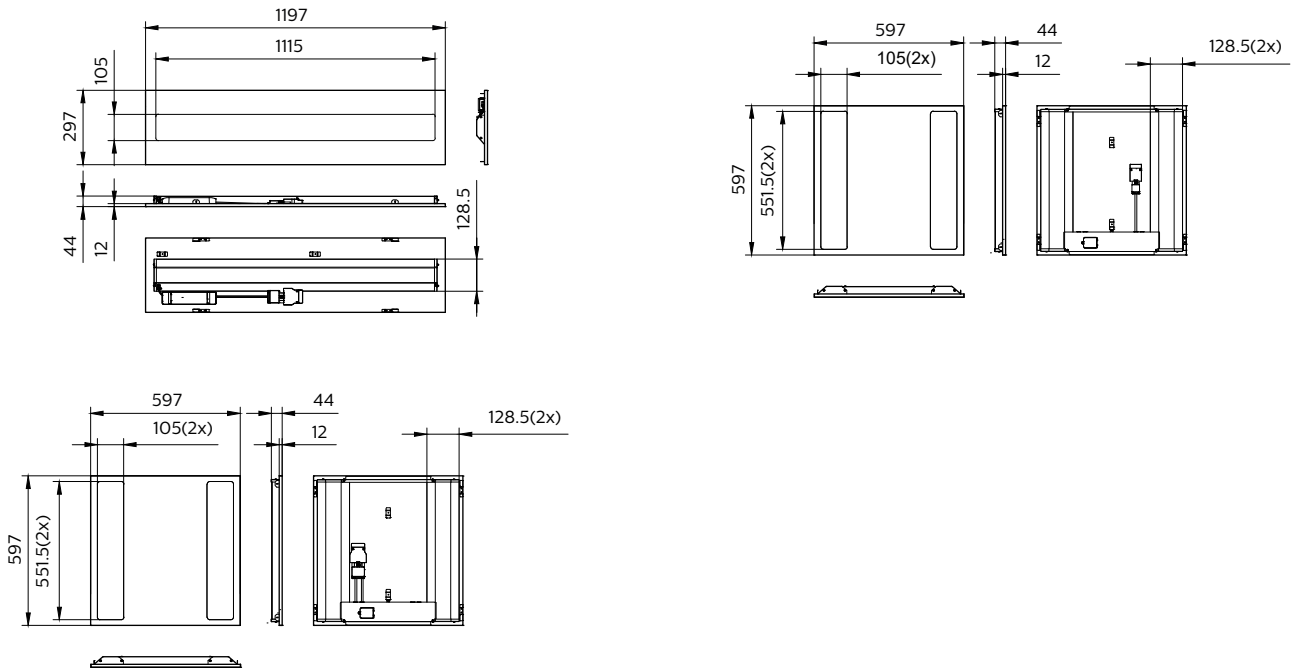


RC136B 31S_37S_43S/840 PSD
W60L60 NOC_SPP



CoreLine recessed

Dimensional drawing



Product details

CoreLine Recessed Backside



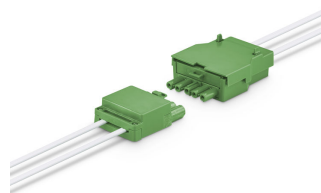
CoreLine Recessed Backside with connector



CoreLine Recessed Backside



CoreLine Recessed connector PSD (dali)



CoreLine recessed

Product details



CoreLine Recessed in ceiling



CoreLine_Recessed_RC136B_60x60

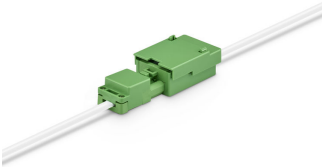


CoreLine Recessed



CoreLine Recessed connector PSU (On/Off)

CoreLine Recessed connector PSU (On/Off)



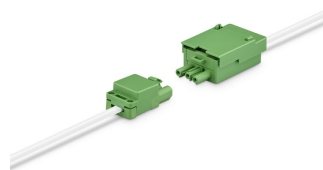
CoreLine Recessed Edge



CoreLine Recessed Edge



CoreLine Recessed connector PSU (On/Off)



CoreLine recessed

Product details

CoreLine Recessed Safety Cable



CoreLine Recessed in ceiling

General Information

CE mark	Yes
Driver included	Yes
ENEC mark	ENEC mark
Flammability mark	For mounting on normally flammable surfaces
Glow-wire test	Temperature 650 °C, duration 30 s
Light source replaceable	No
Number of gear units	Unit

Light Technical

Colour rendering index (CRI)	≥80
Flickering value (PstLM)	1

Operating and Electrical

Input Voltage	220-240 V
Line Frequency	50 or 60 Hz

Mechanical and Housing

Housing Colour	White
----------------	-------

Approval and Application

Mech. impact protection code	IK03
Ingress protection code	IP20/44

Initial Performance (IEC Compliant)

Luminous flux tolerance	+/-10%
-------------------------	--------

Application Conditions

Suitable for random switching	Yes
-------------------------------	-----

General Information

Order Code	Full Product Name	Product family code
97548700	RC136B 31S_37S_43S/840 PSD W60L60 OCELB3	RC136B
97549400	RC136B 31S_37S_43S/840 PSU W60L60NOCELB3	RC136B
97550000	RC136B 31S_37S_43S/840 PSD W60L60NOCELB3	RC136B
96398600	RC136B 60S/840 PSU W60L60 OC	-
96399300	RC136B 60S/840 PSD W60L60 OC	-
51504800	RC136B 40S/830 WIA W60L60 OC	-
51505500	RC136B 43S/840 WIA W60L60 OC	-
51223800	RC136B 31S_37S_43S/840 PSD W30L120 OC	-
51218400	RC136B 31S_37S_43S/840 PSU W60L60 OC	-
51220700	RC136B 28S_34S_40S/830 PSD W60L60 OC	-
51221400	RC136B 31S_37S_43S/840 PSD W60L60 OC	-
51222100	RC136B 28S_34S_40S/830 PSD W30L120 OC	-
97551700	RC136B 28S_34S_40S/830 PSD W30L120OCELB3	RC136B
97552400	RC136B 31S_37S_43S/840 PSD W30L120OCELB3	RC136B
53238000	RC136B 43S/840 WIA W30L120 OC	-
51216000	RC136B 28S_34S_40S/830 PSU W60L60 NOC	-
51217700	RC136B 31S_37S_43S/840 PSU W60L60 NOC	-
51219100	RC136B 31S_37S_43S/840 PSD W60L60 NOC	-

Light Technical (1/2)

CoreLine recessed

Order Code	Full Product Name	All-in Type	Correlated Colour Temperature	Luminous efficacy	Luminous Flux
				(rated) (nom.)	
97548700	RC136B 31S_37S_43S/840 PSD W60L60 OCELB3	All-in, Multi Lumen	4000 K	126 lm/W	3,100 lm
97549400	RC136B 31S_37S_43S/840 PSU W60L60NOCELB3	All-in, Multi Lumen	4000 K	126 lm/W	3,100 lm
97550000	RC136B 31S_37S_43S/840 PSD W60L60NOCELB3	All-in, Multi Lumen	4000 K	126 lm/W	3,100 lm
96398600	RC136B 60S/840 PSU W60L60 OC	-	4000 K	135 lm/W	6,000 lm
96399300	RC136B 60S/840 PSD W60L60 OC	-	4000 K	135 lm/W	6,000 lm
51504800	RC136B 40S/830 WIA W60L60 OC	-	3000 K	135 lm/W	4,000 lm
51505500	RC136B 43S/840 WIA W60L60 OC	-	4000 K	140 lm/W	4,300 lm
51223800	RC136B 31S_37S_43S/840 PSD W30L120 OC	All-in, Multi Lumen	4000 K	140 lm/W	3,100 lm
51218400	RC136B 31S_37S_43S/840 PSU W60L60 OC	All-in, Multi Lumen	4000 K	140 lm/W	3,100 lm
51220700	RC136B 28S_34S_40S/830 PSD W60L60 OC	All-in, Multi Lumen	3000 K	130 lm/W	2,800 lm

Order Code	Full Product Name	All-in Type	Correlated Colour Temperature	Luminous efficacy	Luminous Flux
				(rated) (nom.)	
51221400	RC136B 31S_37S_43S/840 PSD W60L60 OC	All-in, Multi Lumen	4000 K	140 lm/W	3,100 lm
51222100	RC136B 28S_34S_40S/830 PSD W30L120 OC	All-in, Multi Lumen	3000 K	130 lm/W	2,800 lm
97551700	RC136B 28S_34S_40S/830 PSD W30L120OCELB3	All-in, Multi Lumen	3000 K	118 lm/W	2,800 lm
97552400	RC136B 31S_37S_43S/840 PSD W30L120OCELB3	All-in, Multi Lumen	4000 K	126 lm/W	3,100 lm
53238000	RC136B 43S/840 WIA W30L120 OC	-	4000 K	140 lm/W	4,300 lm
51216000	RC136B 28S_34S_40S/830 PSU W60L60 NOC	All-in, Multi Lumen	3000 K	130 lm/W	2,800 lm
51217700	RC136B 31S_37S_43S/840 PSU W60L60 NOC	All-in, Multi Lumen	4000 K	140 lm/W	3,100 lm
51219100	RC136B 31S_37S_43S/840 PSD W60L60 NOC	All-in, Multi Lumen	4000 K	140 lm/W	3,100 lm

Light Technical (2/2)

Order Code	Full Product Name	Optic type	Stroboscopic effect
97548700	RC136B 31S_37S_43S/840 PSD W60L60 OCELB3	Wide beam	0.4
97549400	RC136B 31S_37S_43S/840 PSU W60L60NOCELB3	Wide beam	0.4
97550000	RC136B 31S_37S_43S/840 PSD W60L60NOCELB3	Wide beam	0.4
96398600	RC136B 60S/840 PSU W60L60 OC	Beam angle 84°	0.4
96399300	RC136B 60S/840 PSD W60L60 OC	Beam angle 84°	0.4
51504800	RC136B 40S/830 WIA W60L60 OC	Beam angle 84°	0.4
51505500	RC136B 43S/840 WIA W60L60 OC	Beam angle 84°	0.4
51223800	RC136B 31S_37S_43S/840 PSD W30L120 OC	Beam angle 84°	1.6
51218400	RC136B 31S_37S_43S/840 PSU W60L60 OC	Beam angle 84°	1.6
51220700	RC136B 28S_34S_40S/830 PSD W60L60 OC	Beam angle 84°	1.6

Order Code	Full Product Name	Optic type	Stroboscopic effect
51221400	RC136B 31S_37S_43S/840 PSD W60L60 OC	Beam angle 84°	1.6
51222100	RC136B 28S_34S_40S/830 PSD W30L120 OC	Beam angle 84°	1.6
97551700	RC136B 28S_34S_40S/830 PSD W30L120OCELB3	Wide beam	0.4
97552400	RC136B 31S_37S_43S/840 PSD W30L120OCELB3	Wide beam	0.4
53238000	RC136B 43S/840 WIA W30L120 OC	Beam angle 84°	0.4
51216000	RC136B 28S_34S_40S/830 PSU W60L60 NOC	Beam angle 100°	1.6
51217700	RC136B 31S_37S_43S/840 PSU W60L60 NOC	Beam angle 100°	1.6
51219100	RC136B 31S_37S_43S/840 PSD W60L60 NOC	Beam angle 100°	1.6

CoreLine recessed

Operating and Electrical

Order Code	Full Product Name	Power Consumption
97548700	RC136B 31S_37S_43S/840 PSD W60L60 OCELB3	34 W
97549400	RC136B 31S_37S_43S/840 PSU W60L60NOCELB3	34 W
97550000	RC136B 31S_37S_43S/840 PSD W60L60NOCELB3	34 W
96398600	RC136B 60S/840 PSU W60L60 OC	44 W
96399300	RC136B 60S/840 PSD W60L60 OC	44 W
51504800	RC136B 40S/830 WIA W60L60 OC	31 W
51505500	RC136B 43S/840 WIA W60L60 OC	31 W
51223800	RC136B 31S_37S_43S/840 PSD W30L120 OC	31 W
51218400	RC136B 31S_37S_43S/840 PSU W60L60 OC	31 W

Order Code	Full Product Name	Power Consumption
51220700	RC136B 28S_34S_40S/830 PSD W60L60 OC	31 W
51221400	RC136B 31S_37S_43S/840 PSD W60L60 OC	31 W
51222100	RC136B 28S_34S_40S/830 PSD W30L120 OC	31 W
97551700	RC136B 28S_34S_40S/830 PSD W30L120OCELB3	34 W
97552400	RC136B 31S_37S_43S/840 PSD W30L120OCELB3	34 W
53238000	RC136B 43S/840 WIA W30L120 OC	31 W
51216000	RC136B 28S_34S_40S/830 PSU W60L60 NOC	31 W
51217700	RC136B 31S_37S_43S/840 PSU W60L60 NOC	31 W
51219100	RC136B 31S_37S_43S/840 PSD W60L60 NOC	31 W

Temperature

Order Code	Full Product Name	Ambient temperature range
97548700	RC136B 31S_37S_43S/840 PSD W60L60 OCELB3	0 to +25 °C
97549400	RC136B 31S_37S_43S/840 PSU W60L60NOCELB3	-10 to +40 °C
97550000	RC136B 31S_37S_43S/840 PSD W60L60NOCELB3	0 to +25 °C
96398600	RC136B 60S/840 PSU W60L60 OC	-10 to +35 °C
96399300	RC136B 60S/840 PSD W60L60 OC	-10 to +35 °C
51504800	RC136B 40S/830 WIA W60L60 OC	-10 to +40 °C
51505500	RC136B 43S/840 WIA W60L60 OC	-10 to +40 °C
51223800	RC136B 31S_37S_43S/840 PSD W30L120 OC	-10 to +40 °C
51218400	RC136B 31S_37S_43S/840 PSU W60L60 OC	-10 to +40 °C

Order Code	Full Product Name	Ambient temperature range
51220700	RC136B 28S_34S_40S/830 PSD W60L60 OC	-10 to +40 °C
51221400	RC136B 31S_37S_43S/840 PSD W60L60 OC	-10 to +40 °C
51222100	RC136B 28S_34S_40S/830 PSD W30L120 OC	-10 to +40 °C
97551700	RC136B 28S_34S_40S/830 PSD W30L120OCELB3	0 to +25 °C
97552400	RC136B 31S_37S_43S/840 PSD W30L120OCELB3	0 to +25 °C
53238000	RC136B 43S/840 WIA W30L120 OC	-10 to +40 °C
51216000	RC136B 28S_34S_40S/830 PSU W60L60 NOC	-10 to +40 °C
51217700	RC136B 31S_37S_43S/840 PSU W60L60 NOC	-10 to +40 °C
51219100	RC136B 31S_37S_43S/840 PSD W60L60 NOC	-10 to +40 °C

Controls and Dimming

Order Code	Full Product Name	Dimmable
97548700	RC136B 31S_37S_43S/840 PSD W60L60 OCELB3	Yes
97549400	RC136B 31S_37S_43S/840 PSU W60L60NOCELB3	No
97550000	RC136B 31S_37S_43S/840 PSD W60L60NOCELB3	Yes
96398600	RC136B 60S/840 PSU W60L60 OC	No
96399300	RC136B 60S/840 PSD W60L60 OC	Yes
51504800	RC136B 40S/830 WIA W60L60 OC	Yes
51505500	RC136B 43S/840 WIA W60L60 OC	Yes
51223800	RC136B 31S_37S_43S/840 PSD W30L120 OC	Yes
51218400	RC136B 31S_37S_43S/840 PSU W60L60 OC	No

Order Code	Full Product Name	Dimmable
51220700	RC136B 28S_34S_40S/830 PSD W60L60 OC	Yes
51221400	RC136B 31S_37S_43S/840 PSD W60L60 OC	Yes
51222100	RC136B 28S_34S_40S/830 PSD W30L120 OC	Yes
97551700	RC136B 28S_34S_40S/830 PSD W30L120OCELB3	Yes
97552400	RC136B 31S_37S_43S/840 PSD W30L120OCELB3	Yes
53238000	RC136B 43S/840 WIA W30L120 OC	Yes
51216000	RC136B 28S_34S_40S/830 PSU W60L60 NOC	No
51217700	RC136B 31S_37S_43S/840 PSU W60L60 NOC	No
51219100	RC136B 31S_37S_43S/840 PSD W60L60 NOC	Yes

Approval and Application

Order Code	Full Product Name	Protection class IEC
97548700	RC136B 31S_37S_43S/840 PSD W60L60 OCELB3	Safety class II
97549400	RC136B 31S_37S_43S/840 PSU W60L60NOCELB3	Safety class I
97550000	RC136B 31S_37S_43S/840 PSD W60L60NOCELB3	Safety class II
96398600	RC136B 60S/840 PSU W60L60 OC	Safety class II
96399300	RC136B 60S/840 PSD W60L60 OC	Safety class II
51504800	RC136B 40S/830 WIA W60L60 OC	Safety class II
51505500	RC136B 43S/840 WIA W60L60 OC	Safety class II
51223800	RC136B 31S_37S_43S/840 PSD W30L120 OC	Safety class II

Order Code	Full Product Name	Protection class IEC
51218400	RC136B 31S_37S_43S/840 PSU W60L60 OC	Safety class I
51220700	RC136B 28S_34S_40S/830 PSD W60L60 OC	Safety class II
51221400	RC136B 31S_37S_43S/840 PSD W60L60 OC	Safety class II
51222100	RC136B 28S_34S_40S/830 PSD W30L120 OC	Safety class II
97551700	RC136B 28S_34S_40S/830 PSD W30L120OCELB3	Safety class II
97552400	RC136B 31S_37S_43S/840 PSD W30L120OCELB3	Safety class II
53238000	RC136B 43S/840 WIA W30L120 OC	Safety class II
51216000	RC136B 28S_34S_40S/830 PSU W60L60 NOC	Safety class I

CoreLine recessed

Order Code	Full Product Name	Protection class IEC
51217700	RC136B 31S_37S_43S/840 PSU W60L60 NOC	Safety class I

Order Code	Full Product Name	Protection class IEC
51219100	RC136B 31S_37S_43S/840 PSD W60L60 NOC	Safety class II

Initial Performance (IEC Compliant)

Order Code	Full Product Name	Initial chromaticity
97548700	RC136B 31S_37S_43S/840 PSD W60L60 OCELB3	(0.38, 0.38) SDCM ≤3
97549400	RC136B 31S_37S_43S/840 PSU W60L60NOCELB3	(0.38, 0.38) SDCM ≤3
97550000	RC136B 31S_37S_43S/840 PSD W60L60NOCELB3	(0.38, 0.38) SDCM ≤3
96398600	RC136B 60S/840 PSU W60L60 OC	(0.38, 0.38) SDCM ≤3
96399300	RC136B 60S/840 PSD W60L60 OC	(0.38, 0.38) SDCM ≤3
51504800	RC136B 40S/830 WIA W60L60 OC	(0.43, 0.40) SDCM ≤3
51505500	RC136B 43S/840 WIA W60L60 OC	(0.38, 0.38) SDCM ≤3
51223800	RC136B 31S_37S_43S/840 PSD W30L120 OC	(0.38, 0.38) SDCM ≤3
51218400	RC136B 31S_37S_43S/840 PSU W60L60 OC	(0.38, 0.38) SDCM ≤3

Order Code	Full Product Name	Initial chromaticity
51220700	RC136B 28S_34S_40S/830 PSD W60L60 OC	(0.43, 0.40) SDCM ≤3
51221400	RC136B 31S_37S_43S/840 PSD W60L60 OC	(0.38, 0.38) SDCM ≤3
51222100	RC136B 28S_34S_40S/830 PSD W30L120 OC	(0.43, 0.40) SDCM ≤3
97551700	RC136B 28S_34S_40S/830 PSD W30L120OCELB3	(0.43, 0.40) SDCM ≤3
97552400	RC136B 31S_37S_43S/840 PSD W30L120OCELB3	(0.38, 0.38) SDCM ≤3
53238000	RC136B 43S/840 WIA W30L120 OC	(0.38, 0.38) SDCM ≤3
51216000	RC136B 28S_34S_40S/830 PSU W60L60 NOC	(0.43, 0.40) SDCM ≤3
51217700	RC136B 31S_37S_43S/840 PSU W60L60 NOC	(0.38, 0.38) SDCM ≤3
51219100	RC136B 31S_37S_43S/840 PSD W60L60 NOC	(0.38, 0.38) SDCM ≤3

Application Conditions

Order Code	Full Product Name	Maximum dim level
97548700	RC136B 31S_37S_43S/840 PSD W60L60 OCELB3	3%
97549400	RC136B 31S_37S_43S/840 PSU W60L60NOCELB3	-
97550000	RC136B 31S_37S_43S/840 PSD W60L60NOCELB3	3%
96398600	RC136B 60S/840 PSU W60L60 OC	-
96399300	RC136B 60S/840 PSD W60L60 OC	3%
51504800	RC136B 40S/830 WIA W60L60 OC	1%
51505500	RC136B 43S/840 WIA W60L60 OC	1%
51223800	RC136B 31S_37S_43S/840 PSD W30L120 OC	3%
51218400	RC136B 31S_37S_43S/840 PSU W60L60 OC	-

Order Code	Full Product Name	Maximum dim level
51220700	RC136B 28S_34S_40S/830 PSD W60L60 OC	3%
51221400	RC136B 31S_37S_43S/840 PSD W60L60 OC	3%
51222100	RC136B 28S_34S_40S/830 PSD W30L120 OC	3%
97551700	RC136B 28S_34S_40S/830 PSD W30L120OCELB3	3%
97552400	RC136B 31S_37S_43S/840 PSD W30L120OCELB3	3%
53238000	RC136B 43S/840 WIA W30L120 OC	1%
51216000	RC136B 28S_34S_40S/830 PSU W60L60 NOC	-
51217700	RC136B 31S_37S_43S/840 PSU W60L60 NOC	-
51219100	RC136B 31S_37S_43S/840 PSD W60L60 NOC	3%

