



PowerBalance gen2 – sustainable performance

PowerBalance gen2

When it comes to lighting an office space with LED luminaires, people are usually willing to invest in sustainability provided the investment pays back. At the same time, the system should comply with office lighting norms to ensure a comfortable working environment. PowerBalance gen2 is Philips' most energy-efficient office-norm-compliant LED luminaire. It more than halves energy costs compared to a T5 solution, and the light source has a longer lifetime. This results in significantly lower operational costs, ensuring a payback that meets the needs of the specification market. The gen2 architecture enables a range of highly versatile modular and semi-modular luminaires. These luminaires can be easily mounted in ceilings with exposed T-bar and concealed T-bar, as well as plaster ceilings and bandraaster-type ceilings. PowerBalance is also available in a surface-mounted version.

Benefits

- Extremely efficient office-norm-compliant LED luminaire
- Good-quality lighting solution for direct replacement of T5 luminaires in most indoor applications
- Significantly reduces operational costs, resulting in an attractive payback time

Features

- Variety of mounting options
- Advanced LED technology
- Available in different shapes and sizes
- Office-norm-compliant

Application

- Offices
- Other indoor applications

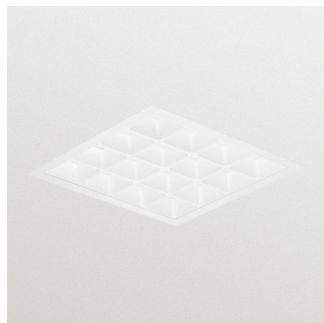
Warnings and Safety

- The product is IP20 and, as such, is not protected against water ingress. Therefore we strongly recommend that the environment in which the luminaire is to be installed should be suitably checked
- If the advice above is not taken and the luminaires are subject to water ingress, Philips / Signify cannot guarantee safe failure and the product warranty will become void

Versions

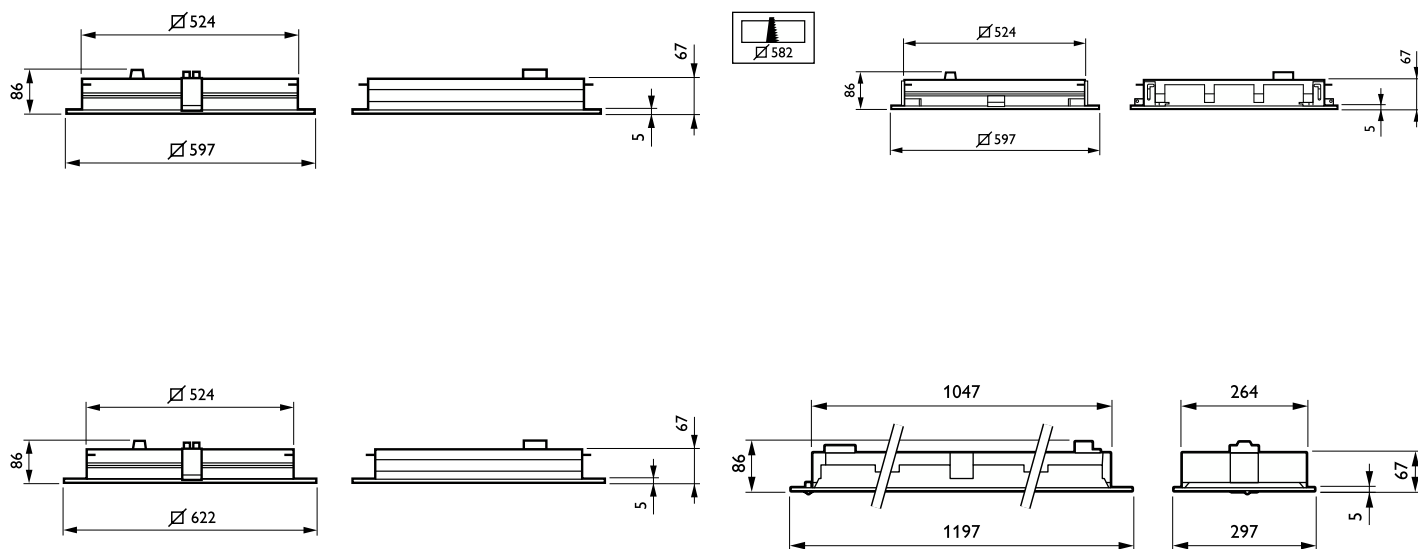


IPPR RC460Bi 0025

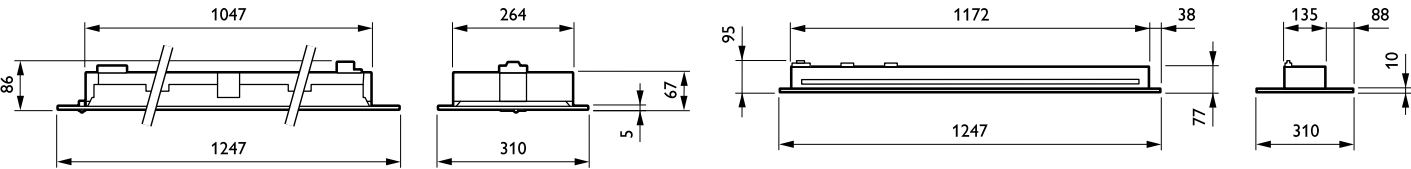


IPPR_RC460Bi_0043-Product photo

Dimensional drawing



Dimensional drawing



Product details



IPDP_RC460Bi_0153-Detail photo



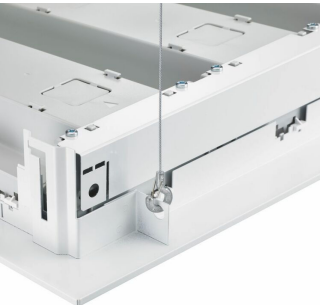
IPDP_RC460Bi_0039-Detail photo



IPDP_RC460Bi_0041-Detail photo



IPDP_RC460Bi_0043-Detail photo



IPDP_RC460Bi_0045-Detail photo

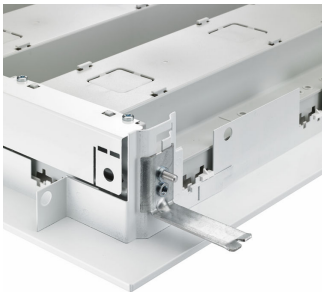


IPDP_RC460Bi_0047-Detail photo

Product details



IPDP_RC460Bi_0049-Detail photo



IPDP_RC460Bi_0051-Detail photo



IPDP_RC460Bi_0053-Detail photo



IPDP_RC460Bi_0054-Detail photo



IPDP_RC460Bi_0055-Detail photo



IPDP_RC460Bi_0073-Detail photo



IPDP_RC460Bi_0103-Detail photo

General Information	
CE mark	Yes
Driver included	Yes
ENEC mark	ENEC mark
Flammability mark	For mounting on normally flammable surfaces
Gear	-
Glow-wire test	Temperature 650 °C, duration 30 s
Light source replaceable	No
Number of gear units	1 unit
Light Technical	
Beam angle of light source	120 degree(s)
Color rendering index (CRI)	≥90
Optic type	Wide beam office compliant
Flickering value (PstLM) - Flickering value as per EN 61000-3-3	1
Stroboscopic effect visibility measure (SVM)	0.4
Operating and Electrical	
Input Voltage	220 to 240 V
Line Frequency	50 to 60 Hz
Temperature	
Ambient temperature range	+10 to +40 °C
Mechanical and Housing	
Housing Color	White
Approval and Application	
Protection class IEC	Safety class I
Mech. impact protection code	IK02
Ingress protection code	IP20/40
Initial Performance (IEC Compliant)	
Initial chromaticity	(0.38, 0.38) SDCM <3
Luminous flux tolerance	+/-10%
Application Conditions	
Maximum dim level	1%

General Information

Order Code	Full Product Name	Lamp family code	Product family code	Service tag
96471900	RC461B LED34S/940 PSD W60L60 CPC W	LED34S	RC461B	Yes
96483200	RC461B LED34S/940 PSD W60L60 PCV PIP	LED34S	RC461B	Yes
96484900	RC463B LED40S/940 PSD W62L62 VPC PIP	LED40S	RC463B	Yes
96604100	RC463B LED28S/940 PSD W62L62 VPC PIP	-	RC463B	Yes
96605800	RC463B LED34S/940 PSD W62L62 VPC PIP	-	RC463B	Yes
96676800	RC463B LED28S/930 PSD W62L62 VPC PIP	-	RC463B	Yes
96451100	RC461B LED34S/940 PSD W60L60 VPC PIP	LED34S	RC461B	Yes
96455900	RC461B LED40S/940 PSD W60L60 VPC W	LED40S	RC461B	Yes
96456600	RC461B LED40S/940 PSD W60L60 VPC PIP	LED40S	RC461B	Yes
96472600	RC461B LED40S/940 PSD W60L60 VPC W AIR	LED40S	RC461B	Yes
96475700	RC461B LED34S/930 PSU W60L60 VPC PIP	LED34S	RC461B	Yes
96476400	RC461B LED34S/940 PSD W60L60 VPC W SC	LED34S	RC461B	Yes
00567900	RC461B LED40S/930 PSD W60L60 VPC PIP	-	RC461B	Yes
96442900	RC463B LED40S/940 PSD W31L125 CPC PIP	LED40S	RC463B	Yes
96611900	RC463B LED40S/940 PSD W31L125 VPC PIP	-	RC463B	Yes
97988100	RC463B LED80S/TW9 DIA W31L125 VPC PIP	-	RC463B	-
96440500	RC461B LED34S/930 PSD W30L120 VPC PIP	LED34S	RC461B	Yes
96441200	RC461B LED40S/940 PSD W30L120 VPC PIP	LED40S	RC461B	Yes
96444300	RC461B LED40S/940 PSD W30L120 VPC W	LED40S	RC461B	Yes
96447400	RC461B LED34S/940 PSD W30L120 VPC PIP	LED34S	RC461B	Yes
97986700	RC461B LED80S/TW9 DIA W30L120 VPC PIP	-	RC461B	-

Light Technical (1/2)

Order Code	Full Product Name	Correlated Color Temperature (Nom)	Optical cover type	Luminous Efficacy (rated) (Nom)	Luminous Flux
96471900	RC461B LED34S/940 PSD W60L60 CPC W	4000 K	Polycarbonate bowl/cover	139 lm/W	3,400 lm
96483200	RC461B LED34S/940 PSD W60L60 PCV PIP	4000 K	Polycarbonate bowl/cover	139 lm/W	3,400 lm
96484900	RC463B LED40S/940 PSD W62L62 VPC PIP	4000 K	Polycarbonate bowl/cover	143 lm/W	4,000 lm
96604100	RC463B LED28S/940 PSD W62L62 VPC PIP	4000 K	-	147 lm/W	2,800 lm
96605800	RC463B LED34S/940 PSD W62L62 VPC PIP	4000 K	-	139 lm/W	3,400 lm
96676800	RC463B LED28S/930 PSD W62L62 VPC PIP	3000 K	-	137 lm/W	2,800 lm
96451100	RC461B LED34S/940 PSD W60L60 VPC PIP	4000 K	Polycarbonate bowl/cover	139 lm/W	3,400 lm
96455900	RC461B LED40S/940 PSD W60L60 VPC W	4000 K	Polycarbonate bowl/cover	143 lm/W	4,000 lm
96456600	RC461B LED40S/940 PSD W60L60 VPC PIP	4000 K	Polycarbonate bowl/cover	143 lm/W	4,000 lm
96472600	RC461B LED40S/940 PSD W60L60 VPC W AIR	4000 K	Polycarbonate bowl/cover	143 lm/W	4,000 lm
96475700	RC461B LED34S/930	3000 K	Polycarbonate bowl/cover	133 lm/W	3,400 lm

Order Code	Full Product Name	Correlated Color Temperature (Nom)	Optical cover type	Luminous Efficacy (rated) (Nom)	Luminous Flux
	PSU W60L60 VPC PIP				
96476400	RC461B LED34S/940 PSD W60L60 VPC W SC	4000 K	Polycarbonate bowl/cover	139 lm/W	3,400 lm
00567900	RC461B LED40S/930 PSD W60L60 VPC PIP	3000 K	-	136 lm/W	4,000 lm
96442900	RC463B LED40S/940 PSD W31L125 CPC PIP	4000 K	Polycarbonate bowl/cover	143 lm/W	4,000 lm
96611900	RC463B LED40S/940 PSD W31L125 VPC PIP	4000 K	-	143 lm/W	4,000 lm
97988100	RC463B LED80S/TW9 DIA W31L125 VPC PIP	Tunable white 2700-6500 K	-	130 lm/W	7,700 lm
96440500	RC461B LED34S/930 PSD W30L120 VPC PIP	3000 K	Polycarbonate bowl/cover	133 lm/W	3,400 lm
96441200	RC461B LED40S/940 PSD W30L120 VPC PIP	4000 K	Polycarbonate bowl/cover	143 lm/W	4,000 lm
96444300	RC461B LED40S/940 PSD W30L120 VPC W	4000 K	Polycarbonate bowl/cover	128 lm/W	4,000 lm
96447400	RC461B LED34S/940 PSD W30L120 VPC PIP	4000 K	Polycarbonate bowl/cover	139 lm/W	3,400 lm
97986700	RC461B LED80S/TW9 DIA W30L120 VPC PIP	Tunable white 2700-6500 K	-	130 lm/W	7,700 lm

Light Technical (2/2)

Order Code	Full Product Name	Number of light sources
96471900	RC461B LED34S/940 PSD W60L60 CPC W	1
96483200	RC461B LED34S/940 PSD W60L60 PCV PIP	1
96484900	RC463B LED40S/940 PSD W62L62 VPC PIP	1

Order Code	Full Product Name	Number of light sources
96604100	RC463B LED28S/940 PSD W62L62 VPC PIP	-
96605800	RC463B LED34S/940 PSD W62L62 VPC PIP	-
96676800	RC463B LED28S/930 PSD W62L62 VPC PIP	-

Order Code	Full Product Name	Number of light sources
96451100	RC461B LED34S/940 PSD W60L60 VPC PIP	1
96455900	RC461B LED40S/940 PSD W60L60 VPC W	1
96456600	RC461B LED40S/940 PSD W60L60 VPC PIP	1
96472600	RC461B LED40S/940 PSD W60L60 VPC W AIR	1
96475700	RC461B LED34S/930 PSU W60L60 VPC PIP	1
96476400	RC461B LED34S/940 PSD W60L60 VPC W SC	1
00567900	RC461B LED40S/930 PSD W60L60 VPC PIP	-
96442900	RC463B LED40S/940 PSD W31L125 CPC PIP	1

Order Code	Full Product Name	Number of light sources
96611900	RC463B LED40S/940 PSD W31L125 VPC PIP	-
97988100	RC463B LED80S/TW9 DIA W31L125 VPC PIP	-
96440500	RC461B LED34S/930 PSD W30L120 VPC PIP	1
96441200	RC461B LED40S/940 PSD W30L120 VPC PIP	1
96444300	RC461B LED40S/940 PSD W30L120 VPC W	1
96447400	RC461B LED34S/940 PSD W30L120 VPC PIP	1
97986700	RC461B LED80S/TW9 DIA W30L120 VPC PIP	-

Operating and Electrical

Order Code	Full Product Name	Power Consumption
96471900	RC461B LED34S/940 PSD W60L60 CPC W	24 W
96483200	RC461B LED34S/940 PSD W60L60 PCV PIP	24 W
96484900	RC463B LED40S/940 PSD W62L62 VPC PIP	28 W
96604100	RC463B LED28S/940 PSD W62L62 VPC PIP	19 W
96605800	RC463B LED34S/940 PSD W62L62 VPC PIP	24 W
96676800	RC463B LED28S/930 PSD W62L62 VPC PIP	20.5 W
96451100	RC461B LED34S/940 PSD W60L60 VPC PIP	24 W
96455900	RC461B LED40S/940 PSD W60L60 VPC W	28 W
96456600	RC461B LED40S/940 PSD W60L60 VPC PIP	28 W
96472600	RC461B LED40S/940 PSD W60L60 VPC W AIR	28 W
96475700	RC461B LED34S/930 PSU W60L60 VPC PIP	25.5 W

Order Code	Full Product Name	Power Consumption
96476400	RC461B LED34S/940 PSD W60L60 VPC W SC	24 W
00567900	RC461B LED40S/930 PSD W60L60 VPC PIP	29.5 W
96442900	RC463B LED40S/940 PSD W31L125 CPC PIP	28 W
96611900	RC463B LED40S/940 PSD W31L125 VPC PIP	28 W
97988100	RC463B LED80S/TW9 DIA W31L125 VPC PIP	64 W
96440500	RC461B LED34S/930 PSD W30L120 VPC PIP	25.5 W
96441200	RC461B LED40S/940 PSD W30L120 VPC PIP	28 W
96444300	RC461B LED40S/940 PSD W30L120 VPC W	28 W
96447400	RC461B LED34S/940 PSD W30L120 VPC PIP	24 W
97986700	RC461B LED80S/TW9 DIA W30L120 VPC PIP	64 W

Controls and Dimming

Order Code	Full Product Name	Dimmable
96471900	RC461B LED34S/940 PSD W60L60 CPC W	Yes
96483200	RC461B LED34S/940 PSD W60L60 PCV PIP	Yes
96484900	RC463B LED40S/940 PSD W62L62 VPC PIP	Yes
96604100	RC463B LED28S/940 PSD W62L62 VPC PIP	Yes
96605800	RC463B LED34S/940 PSD W62L62 VPC PIP	Yes
96676800	RC463B LED28S/930 PSD W62L62 VPC PIP	Yes
96451100	RC461B LED34S/940 PSD W60L60 VPC PIP	Yes
96455900	RC461B LED40S/940 PSD W60L60 VPC W	Yes
96456600	RC461B LED40S/940 PSD W60L60 VPC PIP	Yes
96472600	RC461B LED40S/940 PSD W60L60 VPC W AIR	Yes
96475700	RC461B LED34S/930 PSU W60L60 VPC PIP	No

Order Code	Full Product Name	Dimmable
96476400	RC461B LED34S/940 PSD W60L60 VPC W SC	Yes
00567900	RC461B LED40S/930 PSD W60L60 VPC PIP	Yes
96442900	RC463B LED40S/940 PSD W31L125 CPC PIP	Yes
96611900	RC463B LED40S/940 PSD W31L125 VPC PIP	Yes
97988100	RC463B LED80S/TW9 DIA W31L125 VPC PIP	Yes
96440500	RC461B LED34S/930 PSD W30L120 VPC PIP	Yes
96441200	RC461B LED40S/940 PSD W30L120 VPC PIP	Yes
96444300	RC461B LED40S/940 PSD W30L120 VPC W	Yes
96447400	RC461B LED34S/940 PSD W30L120 VPC PIP	Yes
97986700	RC461B LED80S/TW9 DIA W30L120 VPC PIP	Yes

Application Conditions

Order Code	Full Product Name	Suitable for random switching
96471900	RC461B LED34S/940 PSD W60L60 CPC W	No
96483200	RC461B LED34S/940 PSD W60L60 PCV PIP	No
96484900	RC463B LED40S/940 PSD W62L62 VPC PIP	No
96604100	RC463B LED28S/940 PSD W62L62 VPC PIP	No
96605800	RC463B LED34S/940 PSD W62L62 VPC PIP	No
96676800	RC463B LED28S/930 PSD W62L62 VPC PIP	No
96451100	RC461B LED34S/940 PSD W60L60 VPC PIP	No
96455900	RC461B LED40S/940 PSD W60L60 VPC W	No

Order Code	Full Product Name	Suitable for random switching
96456600	RC461B LED40S/940 PSD W60L60 VPC PIP	No
96472600	RC461B LED40S/940 PSD W60L60 VPC W AIR	No
96475700	RC461B LED34S/930 PSU W60L60 VPC PIP	No
96476400	RC461B LED34S/940 PSD W60L60 VPC W SC	No
00567900	RC461B LED40S/930 PSD W60L60 VPC PIP	Yes (relates to presence/ movement detection and daylight harvesting)
96442900	RC463B LED40S/940 PSD W31L125 CPC PIP	No

PowerBalance gen2

Order Code	Full Product Name	Suitable for random switching
96611900	RC463B LED40S/940 PSD W31L125 VPC PIP	No
97988100	RC463B LED80S/TW9 DIA W31L125 VPC PIP	No
96440500	RC461B LED34S/930 PSD W30L120 VPC PIP	No
96441200	RC461B LED40S/940 PSD W30L120 VPC PIP	No

Order Code	Full Product Name	Suitable for random switching
96444300	RC461B LED40S/940 PSD W30L120 VPC W	No
96447400	RC461B LED34S/940 PSD W30L120 VPC PIP	No
97986700	RC461B LED80S/TW9 DIA W30L120 VPC PIP	No

