



EFix – for a greener office

EFix TPS262

The EFix TL5 luminaire range is a dedicated, affordable choice of innovative lighting that enables massive energy savings to be made when old electromagnetic installations are replaced by the latest Philips technology. The range's optical performance complies with the latest EN-12464 norms, ensuring improved lighting quality in every application. Used in combination with high-frequency gear, Philips MASTER TL5 lamps enable substantial energy savings to be made. These savings can be further increased by using a Luxsense daylight controller integrated into the luminaire. The practical design of EFix combines both surface-mounted (TCS260) and suspended (TPS262) luminaires in one design. Thanks to the luminaire's easily removable top cover, the beam can be adjusted to provide direct or direct/indirect lighting. EFix is supplied with lamps and is ready to install, minimizing installation time. EFix recessed TBS260 completes Philips' range of luminaires for general lighting applications in offices and shops.

Benefits

- A greener office, with an affordable choice of innovative TL5 luminaires for massive energy savings when replacing old luminaires with electromagnetic gear
- Energy savings can be further increased by using a Luxsense daylight controller integrated in the luminaire
- The easiest product in its segment to install, with simple direct/indirect adjustment thanks to the easily removable top cover

Features

- Simple design
- MASTER TL5 lamps; suitable for use with high-frequency gear
- Mini optics; performance compliant with EN-12464 norms
- Integrated Luxsense daylight controller available
- Easily removable top cover: allows beam adjustment to provide direct or direct/indirect lighting

Application

- Offices
- Shops

Specifications

Type	TPS262
Light source	Fluorescent: - 1 x or 2 x MASTER TL5 / G5 / 28, 35, 49, 54, 80 W
Lamp included	Yes (lamp color 830 or 840)
Gear	Electronic, 220 - 240 V / 50 - 60 Hz: - High Frequency Performer (HFP) - High Frequency Regulator (HFR)
Optic	High-gloss optic, double parabolic, closed (C6) Semi-high-gloss optic, double parabolic (D6) Matt optic, double parabolic louvers, closed (M6) Matt mirror, ribbed cross louvers (M2) Prismatic/opal curved polycarbonate cover in matt high-quality aluminum optic (OD)
Connection	Push-in connector

Color	White, RAL 9016 (WH) Silver, RAL 9006 (SI)
Option	Lighting controls: - Luxsense daylight controller (LX) - Actilume multi controller (ACL)
Material	Housing: pre-lacquered steel Optic: pre-lacquered steel or aluminum End cap: polycarbonate
Installation	Individual or in line; suspended mounting with a set of two triangular steel-wire suspensions (SMT), both with metal-like power cord, 150 cm, and ceiling caps
Accessory	Coupling piece, ZCS260 CP
Remarks	Delivered with lamps, suspension set and push-in connector

Versions



EFix TPS262 suspended luminaire
with OLC high-gloss aluminum
optic with 3D lamellae (C6)



EFix TPS260/262 suspended
luminaire with OLC semi-high-
gloss aluminum optic with 3D
lamellae (D6)



EFix TPS262 suspended luminaire
with OLC high-gloss aluminum
optic with 3D lamellae (C6)

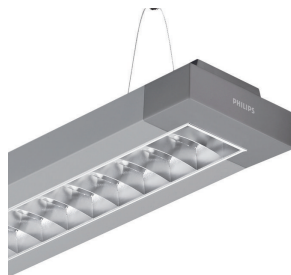


EFix TPS262 suspended luminaire
with OLC semi-high-gloss
aluminum optic with 3D lamellae
(D6)

Versions



EFix TPS262 suspended luminaire
with OLC high-gloss aluminum
optic with 3D lamellae (C6)



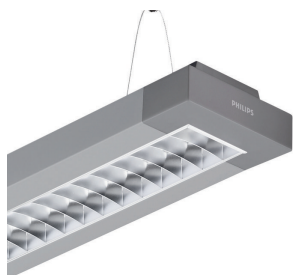
EFix TPS262 suspended luminaire
with OLC semi-high-gloss
aluminum optic with 3D lamellae
(D6)



EFix TPS262 suspended luminaire
with matt aluminum optic with
profiled lamellae (M2)



EFix TPS262 suspended luminaire
with OLC high-gloss aluminum
optic with 3D lamellae (C6)



EFix TPS262 suspended luminaire
with OLC semi-high-gloss
aluminum optic with 3D lamellae
(D6)

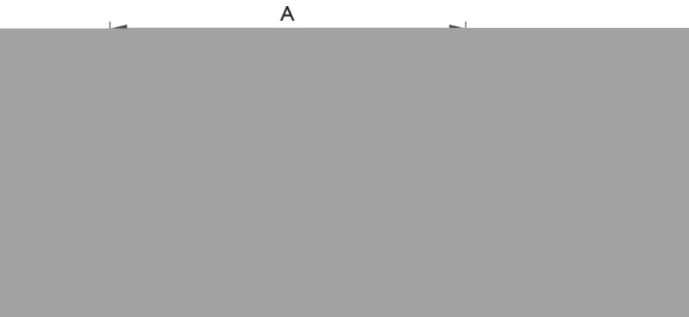


EFix TPS262 suspended luminaire
with matt aluminum optic with
profiled lamellae (M2)



EFix TPS262 suspended luminaire
with OLC matt aluminum optic
with 3D lamellae (M6)

Dimensional drawing



Product	B	C
TPS262 1x28W/830 HFS C6 SMT WH	500 mm	1241 mm
TPS262 1x28W/830 HFS D6 SMT WH	500 mm	1241 mm
TPS262 2x28W/830 HFS C6 SMT WH	500 mm	1241 mm
TPS262 2x28W/830 HFS D6 SMT WH	500 mm	1241 mm
TPS262 1x54W/840 HFS C6 SMT SI	500 mm	1241 mm
TPS262 1x54W/840 HFS D6 SMT SI	500 mm	1241 mm
TPS262 1x54W/840 HFS M2 SMT SI	500 mm	1241 mm
TPS262 2x54W/840 HFS C6 SMT SI	500 mm	1241 mm
TPS262 2x54W/840 HFS D6 SMT SI	500 mm	1241 mm
TPS262 2x54W/840 HFS M2 SMT SI	500 mm	1241 mm
TPS262 1x80W/840 HFP D6 SMT SI	650 mm	1541 mm
TPS262 1x80W/840 HFP D6 SMT WH	650 mm	1541 mm
TPS262 2x28W/830 HFD D6 PVCFR CCE SMT WH	500 mm	1241 mm
TPS262 2x35W/830 HFS MEP M6 SMT WH	650 mm	1541 mm

Product details



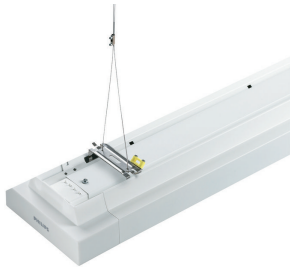
IPDP_TPS260i_0001-Detail photo



IPDP_TPS260i_0005-Detail photo



Product details



IPDP_TPS260i_0012-Detail photo



IPDP_TPS260i_0017-Detail photo



IPDP_TPS260i_0019-Detail photo



IPDP_TPS260i_0007-Detail photo

Application conditions	
Suitable for random switching	Not applicable
Approval and application	
Ingress protection code	IP20
Operating and electrical	
Input Voltage	220 to 240 V
General information	
CE mark	CE mark
Protection class IEC	Safety class I
Optical cover/lens type	-
Emergency lighting	-
ENEC mark	ENEC mark
Flammability mark	For mounting on normally flammable surfaces
Glow-wire test	Temperature 850 °C, duration 5 s
Kombipack	Lamp(s) included
Lamp family code	TL5
Embedded control	-
Product Family Code	TPS262
Service tag	Yes

General information (1/2)

Order Code	Full Product Name	Gear	Lamp power	Number of light sources	Optic type
910402464612	TPS262 1x28W/830 HFS C6 SMT WH	HFS	28 W	1 pc	High-gloss optic double parabolic closed
910402464712	TPS262 1x28W/830 HFS D6 SMT WH	HFS	28 W	1 pc	Semi-high-gloss optic double parabolic
910402469212	TPS262 1x80W/840 HFP D6 SMT WH	HFP	80 W	1 pc	Semi-high-gloss optic double parabolic
910402465012	TPS262 2x28W/830 HFS C6 SMT WH	HFS	28 W	2 pcs	High-gloss optic double parabolic closed
910402465112	TPS262 2x28W/830 HFS D6 SMT WH	HFS	28 W	2 pcs	Semi-high-gloss optic double parabolic
910925504812	TPS262 2x28W/830 HFD D6 PVCFR CCE SMT WH	HFD	28 W	2 pcs	Semi-high-gloss optic double parabolic
910402465412	TPS262 1x54W/840 HFS C6 SMT SI	HFS	54 W	1 pc	High-gloss optic double parabolic closed
910402465512	TPS262 1x54W/840 HFS D6 SMT SI	HFS	54 W	1 pc	Semi-high-gloss optic double parabolic
910402469012	TPS262 1x80W/840 HFP D6 SMT SI	HFP	80 W	1 pc	Semi-high-gloss optic double parabolic
910402465612	TPS262 1x54W/840 HFS M2 SMT SI	HFS	54 W	1 pc	Matt mirror ribbed lamellae louver
910402465712	TPS262 2x54W/840 HFS C6 SMT SI	HFS	54 W	2 pcs	High-gloss optic double parabolic closed
910402465812	TPS262 2x54W/840 HFS D6 SMT SI	HFS	54 W	2 pcs	Semi-high-gloss optic double parabolic
910402465912	TPS262 2x54W/840 HFS M2 SMT SI	HFS	54 W	2 pcs	Matt mirror ribbed lamellae louver
910925516412	TPS262 2x35W/830 HFS MEP M6 SMT WH	HFS	35 W	2 pcs	Matt optic double parabolic louver closed

General information (2/2)

Order Code	Full Product Name	Internal wiring
910402464612	TPS262 1x28W/830 HFS C6 SMT WH	Standard
910402464712	TPS262 1x28W/830 HFS D6 SMT WH	Standard
910402469212	TPS262 1x80W/840 HFP D6 SMT WH	Standard
910402465012	TPS262 2x28W/830 HFS C6 SMT WH	Standard
910402465112	TPS262 2x28W/830 HFS D6 SMT WH	Standard
910925504812	TPS262 2x28W/830 HFD D6 PVCFR CCE SMT WH	PVC free
910402465412	TPS262 1x54W/840 HFS C6 SMT SI	Standard
Order Code	Full Product Name	Internal wiring
910402465512	TPS262 1x54W/840 HFS D6 SMT SI	Standard
910402469012	TPS262 1x80W/840 HFP D6 SMT SI	Standard
910402465612	TPS262 1x54W/840 HFS M2 SMT SI	Standard
910402465712	TPS262 2x54W/840 HFS C6 SMT SI	Standard
910402465812	TPS262 2x54W/840 HFS D6 SMT SI	Standard
910402465912	TPS262 2x54W/840 HFS M2 SMT SI	Standard
910925516412	TPS262 2x35W/830 HFS MEP M6 SMT WH	Standard

Mechanical and housing

Order Code	Full Product Name	Color
910402464612	TPS262 1x28W/830 HFS C6 SMT WH	White
910402464712	TPS262 1x28W/830 HFS D6 SMT WH	White
910402469212	TPS262 1x80W/840 HFP D6 SMT WH	White
910402465012	TPS262 2x28W/830 HFS C6 SMT WH	White
910402465112	TPS262 2x28W/830 HFS D6 SMT WH	White
910925504812	TPS262 2x28W/830 HFD D6 PVCFR CCE SMT WH	White
Order Code	Full Product Name	Color
910402465412	TPS262 1x54W/840 HFS C6 SMT SI	Silver
910402465512	TPS262 1x54W/840 HFS D6 SMT SI	Silver
910402469012	TPS262 1x80W/840 HFP D6 SMT SI	Silver
910402465612	TPS262 1x54W/840 HFS M2 SMT SI	Silver
910402465712	TPS262 2x54W/840 HFS C6 SMT SI	Silver
910402465812	TPS262 2x54W/840 HFS D6 SMT SI	Silver

EFix TPS262

Order Code	Full Product Name	Color
910402465912	TPS262 2x54W/840 HFS M2 SMT SI	Silver

Order Code	Full Product Name	Color
910925516412	TPS262 2x35W/830 HFS MEP M6 SMT WH	White

