



Get your city ready for the future with DigiStreet

DigiStreet

Developed with the aim of becoming your long-term partner, the system-ready architecture of DigiStreet enables you to enjoy the benefits of connected lighting systems today and also gets the city ready for the innovations to come! Its two sockets enable you to connect directly to the Philips CityTouch system and it is also prepared to connect you to the future innovations of IoT. Next to this, each individual luminaire is uniquely identifiable, thanks to the Philips Service tag application. With a simple scan of a QR code, placed on the inside of the mast door, you gain instant access to the luminaire configuration, making maintenance and programming operations faster and easier, no matter what stage of the luminaire's lifetime. DigiStreet is also equipped with dedicated light recipes that: 1) maintain optimal ecosystems for bats or 2) preserve a dark night sky.

Benefits

- Prepared for the future: it is easy to upgrade directly after installation or later with future CMS nodes and sensors to enable new functionalities
- Large availability of lens optics to match international road and street geometries
- Equipped with a service tag, a QR-based identification system that makes each luminaire uniquely identifiable and provides maintenance, installation and spare part information

Features

- Easy luminaire identification due to the Philips Service tag
- High efficacy up to 161 lm/W
- Choice of 30+ different beams and different internal louvres
- Surge protection, 10 kV
- L-tune tool available
- Lifetime 100 Khrs up to L96 at Tq +25 °C
- Internal louvre (optional)

Application

- Traffic routes and main access road
- Urban and residential areas
- City centres and high streets
- Cycle paths, footpaths and pedestrian crossings

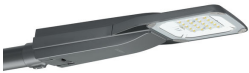
Specifications

| | | | |
|--|---|---|--|
| Type | BGP760 (Micro version) BGP761 (Mini version) BGP762 (medium version) BGP763 (large version) | Performance Ambient Temperature Tq | +25 °C |
| Light source | Integral LED-module | Operating temperature range | -40 to +35 °C |
| Power | Micro version: WW: 5.6 up to 39.5 W, NW/CW: 6 up to 39 W Mini version: WW: 34 up to 72 W, NW/CW: 27.5 up to 74 W Medium version: WW: 69 up to 152 W, NW/CW: 55 up to 146 W Large version: WW: 178 up to 230 W, NW/CW: 144 up to 220 W | Driver | Built-in (self-ballasted LED-module) |
| Luminous flux system | Micro version: WW from 550 to 4,500 lm, NW/CW 700-5,500 lm Mini version: WW from 4,000 to 8,500 lm, NW/CW 4,000-11,800 lm Medium: WW from 8,500 to 18,000 lm, NW/CW 8,500-21,600 lm Large: WW from 20,600 to 26,400 lm, NW/CW 20,900-32,000 lm Or tailor flux using L-Tune software | Mains voltage | 220-240 V / 50-60 Hz |
| Luminaire efficacy | Micro version: NW/CW up to 147 lm/W, WW up to 118 lm/W Mini version: NW/CW up to 154 lm/W, WW up to 125 lm/W Medium: NW/CW up to 161 lm/W, WW up to 128 lm/W Large: NW/CW up to 150 lm/W, WW up to 121 lm/W | Inrush current | 22 W: 15 A/ 360 µs (max 23 drivers on CB 16A B type), SR 22 W: 18A/ 320 µs (max 21 drivers on CB 16A B type) 40 W: 22 A/ 290 µs (max 20 drivers on CB 16A B type), SR 40 W: 21A/ 300 µs (max 21 drivers on CB 16A B type) 75 W: 46 A/ 250 µs (max 11 drivers on CB 16A B type), SR 75W: 65 A/ 330 µs (max 6 drivers on CB 16A B type) 150 W: 53 A/ 300 µs (max 8 drivers on CB 16A B type), SR 150 W: 65 A/ 330 µs (max 6 drivers on CB 16A B type) 2x 150 W: 106 A/300 µs (max 4 drivers on CB 16A B type), SR 150 W: 130 A/330 µs (max 3 drivers on CB 16A B type) |
| Correlated Colour Temperature | Warm white (WW): 3,000 K Neutral white (NW): 4,000 K Cool white (CW): 5,700 K | Dimming | Stand-alone DynaDimmer DALI |
| Colour Rendering Index | NW and CW: 70 WW: 80 | Options | Wired for SR (System Ready), mini Photocell or NEMA socket |
| Lumen maintenance at median useful life* 100,000 h | BGP760: up to L96 BGP761: up to L95 BGP762: up to L94 BGP763: up to L92 | Optic | Narrow, medium, wide or extra-wide road optics: DM10, DM11, DM12, DM13, DM30, DM31, DM32, DM33, DM50, DM70, DPR1, DPL1, DS50, DW10, DW50, DX10, DX50, DX51, DX70, DN09, DN10, DN11, DN50, DRM1, DRM2, DRN1, DRN2, |
| Control gear failure rate at median useful life 100,000 h | 10% | Optical element | Louvres (BL1, BL2) |
| | | Optical cover | Tempered glass |
| | | Material | High-pressure, die-cast LM6 aluminium |
| | | Colour | RAL 7022 for Philips Dark grey Other RAL or AKZO colours available on request |
| | | Connection | M20 cable gland with strain relief, for cable Ø 6-12 mm |
| | | Maintenance | Canopy to access the gear tray hinges upwards, and it is secured by a stainless steel locking bar The Philips Service tag will help to identify the product and share all product information on the spot |

| | |
|-------------------------------------|---|
| Installation | Post top: 48-62 or 76 mm |
| | Side entry: 32-48 mm, 48-62 mm |
| | Recommended mounting height: |
| | Micro version: 4 to 6 m |
| | Mini version: 5 to 8 m |
| | Medium version: 6 to 12 m |
| | Large version: 10 to 18 m |
| | Standard tilt angle post top: 0° |
| | Adjustable tilt angle: -20°, -15°, -10°, -5°, 0°, +5°, +10°, +15°, +20° |
| | Adjustable light distribution: no |
| | Max SCx |
| | Micro version: 0.0450 m ² |
| Mini version: 0.0589 m ² | |

| | |
|-------------------------|---|
| | Medium version: 0.0562 m ² |
| | Large version: 0.0562 m ² |
| SR compatibility | For SR-based luminaires only SR-certified components/sensors are to be used (see also: http://www.lighting.philips.co.uk/oem-emea/products/driving-connected-lighting?). |
| | Functional compatibility of 2 (SR-certified) components/sensors to be used in combination as well as to override the possibility of any lineswitch function used in an SR-based luminaire, is to be released by the master component/sensor supplier. For the use of a NEMA 7-pin socket on an SR-based luminaire, a full-system verification is required. Not following this advice can/will cause risk of damage and non-compliance for which Signify cannot take any responsibility. |

Versions



Product details

Digistreet-BGP760-DP06.tif



Digistreet-BGP760-DP09.tif



Digistreet-BGP760-DP10.tif



Digistreet-BGP760-DP11.tif



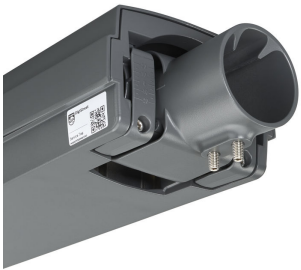
Product details



Digistreet-BGP761-DP17.tif



Digistreet-BGP761-DP18.tif



Digistreet-BGP761-DP19.tif



Digistreet-BGP761-DP20.tif



Digistreet-BGP761-DP21.tif



Digistreet-BGP761-DP22.tif



Digistreet-BGP761-DP23.tif



Digistreet-BGP761-DP24.tif

Product details

Digistreet-BGP761-DP25.tif



Digistreet-BGP761-DP26.tif



Application Conditions

| | |
|-------------------|----------------|
| Maximum dim level | Not applicable |
|-------------------|----------------|

Approval and Application

| | |
|--|--|
| Mech. impact protection code | IK09 |
| Surge Protection (Common/Differential) | Luminaire surge protection level up to 6 kV differential mode and 8 kV common mode |

Controls and Dimming

| | |
|----------|----|
| Dimmable | No |
|----------|----|

General Information

| | |
|--------------------------|-------------------|
| CE mark | CE mark |
| Light source colour | 740 neutral white |
| Optical cover/lens type | FG |
| Driver included | Yes |
| Flammability mark | NO |
| Gear | EB |
| Glow-wire test | 650/5 |
| Light source replaceable | No |
| Number of gear units | 1 unit |
| Number of light sources | 1 |
| Product Family Code | BGP760 |

Initial Performance (IEC Compliant)

| | |
|--------------------------------|--------|
| Init. Corr. Colour Temperature | 4000 K |
| Init. Colour Rendering Index | 70 |

Light Technical

| | |
|--------------------------------|----|
| Standard tilt angle side entry | 0° |
| Standard tilt angle posttop | 0° |
| Upward light output ratio | 0 |

Mechanical and Housing

| | |
|--------|-----------|
| Colour | Dark Grey |
|--------|-----------|

Operating and Electrical

| Order Code | Full Product Name | Driver current |
|------------|------------------------------------|----------------|
| 37689800 | BGP760 LED34-/740 I DX10 DGR 32-48 | 368 mA |
| 37691100 | BGP760 LED44-/740 I DW50 DGR 32-48 | 489 mA |

General Information

| Order Code | Full Product Name | Luminaire light beam spread | Lamp family code | Optic type | UL mark |
|------------|--|-----------------------------|------------------|-------------------------------|---------|
| 37689800 | BGP760 LED34-/740 I DX10 DGR 32-48 | 150° - 43° x 67° | LED34 | Distribution extra-wide 10 | No |

| Order Code | Full Product Name | Luminaire light beam spread | Lamp family code | Optic type | UL mark |
|------------|--|-----------------------------|------------------|-------------------------|---------|
| 37691100 | BGP760 LED44-/740 I DW50 DGR 32-48 | 152° - 24° x 66° | LED44 | Distribution wide 50 | - |

Initial Performance (IEC Compliant)

| Order Code | Full Product Name | Initial luminous flux |
|------------|------------------------------------|-----------------------|
| 37689800 | BGP760 LED34-/740 I DX10 DGR 32-48 | 2958 lm |

| Order Code | Full Product Name | Initial luminous flux |
|------------|------------------------------------|-----------------------|
| 37691100 | BGP760 LED44-/740 I DW50 DGR 32-48 | 3784 lm |

