



# CoreLine Wall-mounted – the clear choice for LED

## CoreLine Wall-mounted

Whether for a new building or renovation of an existing space, customers want lighting solutions that provide quality of light and substantial energy and maintenance savings. The new CoreLine Wall-mounted range of LED products can be used to replace traditional wall-mounted luminaires incorporating compact fluorescent lamps. The process of selecting, installing and maintaining is so easy – it's a simple switch.

### Benefits

- Up to 55% energy savings compared with luminaires with PL-C lamps
- Direct replacement for traditional wall-mounted luminaires
- Complete range covering all application requirements in one product (light levels, IP65, IK10, certified emergency lighting, built-in controls)

### Features

- Unobtrusive design
- Three lumen packages replacing traditional wall-mounted luminaires with 1x18 W / 2x18 W / 2x26 W PL-C
- Water- and vandal-proof as standard
- Phase-cut dimming as standard
- Frosted diffuser ensuring homogeneous light effect and visual comfort
- Optional emergency lighting
- Optional on/off movement detection or programmed 100%-10%-0% corridor dimming functionality

# CoreLine Wall-mounted

## Application

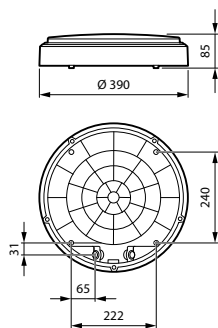
- Corridors
- Staircases
- Public entrance areas
- Bathrooms
- Emergency exits
- Parking garages
- Outdoor safety lighting

## Versions



CoreLine wall-mounted WL140V All-in

## Dimensional drawing



## Product details



CoreLine Wall-mounted WL140V  
Rim Black



CoreLine Wall-mounted WL140V  
Rim Grey

CoreLine Wall-mounted

Product details



CoreLine Wall-mounted WL140V  
Wall-mounted Black



CoreLine Wall-mounted WL140V  
Wall-mounted PSU



CoreLine Wall-mounted WL140V  
Ceiling-mounted Grey



CoreLine Wall-mounted WL140V  
Ceiling-mounted Black



CoreLine Wall-mounted WL140V  
Wall-mounted White with Half-  
moon Accessory



CoreLine Wall-mounted WL140V  
Wall-mounted Grey with Half-  
moon Accessory



Coreline Wall-mounted WL140V  
Top View (with screw locations)



CoreLine Wall-mounted WL140V  
Wall-mounted Switchable Lumen  
& CCT

CoreLine Wall-mounted

Product details



CoreLine Wall-mounted WL140V  
Half-moon Accessory Black



CoreLine Wall-mounted WL140V  
Half-moon Accessory Grey



CoreLine Wall-mounted WL140V  
Ceiling-mounted



CoreLine Wall-mounted WL140V  
Wall-mounted PSR MDU



CoreLine Wall-mounted WL140V  
Wall-mounted Grey



CoreLine Wall-mounted WL140V  
Half-moon Accessory White



Coreline Wall-mounted WL140V  
Top View

# CoreLine Wall-mounted

## General Information

CE mark	Yes
Driver included	Yes
Flammability mark	-
Glow-wire test	Temperature 850 °C, duration 30 s
Number of gear units	1 unit

## Light Technical

Beam angle of light source	120 degree(s)
Color rendering index (CRI)	>80
Optic type	Symmetrical
Flickering value (PstLM) - Flickering value as per EN 61000-3-3	1
Stroboscopic effect visibility measure (SVM)	1.6

## Operating and Electrical

Input Voltage	220-240 V
Line Frequency	50 or 60 Hz

## Mechanical and Housing

Housing Color	White
---------------	-------

## Approval and Application

Protection class IEC	Safety class II
Mech. impact protection code	IK10
Ingress protection code	IP65

## Initial Performance (IEC Compliant)

Luminous flux tolerance	+/-10%
-------------------------	--------

## Application Conditions

Suitable for random switching	No
-------------------------------	----

## General Information (1/2)

Order Code	Full Product Name	Type of emergency lighting battery	ENEC mark	Embedded control	Light source replaceable
911401848182	WL140V LED12_20S/827_830_840 PSU WH	-	ENEC mark	-	Yes
911401848282	WL140V LED20_34S/827_830_840 PSU WH	-	ENEC mark	-	Yes
910505101539	WL140V LED20S/840 PSED WH	Lithium	-	-	No
910505101542	WL140V LED34S/830 PSED WH	Lithium	-	-	No
911401847382	WL140V LED12S/830 PSU WH	-	ENEC mark	-	Yes
911401847482	WL140V LED12S/840 PSU WH	-	ENEC mark	-	Yes
911401847682	WL140V LED20S/840 PSU WH	-	ENEC mark	-	Yes
911401851682	WL140V LED12S/840 PSR MDU WH	-	ENEC mark	Programmable movement and light sensor with wireless grouping	Yes
911401851882	WL140V LED20S/840 PSR MDU WH	-	ENEC mark	Programmable movement and light sensor with wireless grouping	Yes
911401851982	WL140V LED34S/830 PSR MDU WH	-	ENEC mark	Programmable movement and light sensor with wireless grouping	Yes

## General Information (2/2)

Order Code	Full Product Name	Product family code
911401848182	WL140V LED12_20S/827_830_840 PSU WH	-
911401848282	WL140V LED20_34S/827_830_840 PSU WH	-
910505101539	WL140V LED20S/840 PSED WH	WL140V
910505101542	WL140V LED34S/830 PSED WH	WL140V
911401847382	WL140V LED12S/830 PSU WH	-

Order Code	Full Product Name	Product family code
911401847482	WL140V LED12S/840 PSU WH	-
911401847682	WL140V LED20S/840 PSU WH	-
911401851682	WL140V LED12S/840 PSR MDU WH	-
911401851882	WL140V LED20S/840 PSR MDU WH	-
911401851982	WL140V LED34S/830 PSR MDU WH	-

## Light Technical

Order Code	Full Product Name	"All-in" Type	Correlated Color Temperature (Nom)	Luminous Efficacy (rated) (Nom)	Luminous Flux
911401848182	WL140V LED12_20S/	"All-in" Multi Lumen and	2700 K	100 lm/W	1,200 lm

Order Code	Full Product Name	"All-in" Type	Correlated Color Temperature (Nom)	Luminous Efficacy (rated) (Nom)	Luminous Flux
	827_830_840 PSU WH	Multi Color Temperature			

## CoreLine Wall-mounted

Order Code	Full Product		Correlated Color Temperature (Nom)	Luminous Efficacy (rated) (Nom)	Luminous Flux
	Name	"All-in" Type			
911401848282	WL140V	"All-in" Multi	2700 K	100 lm/W	2,000 lm
	LED20_34S/	Lumen and			
	827_830_840	Multi Color			
	PSU WH	Temperature			
910505101539	WL140V	-	4000 K	100 lm/W	2,200 lm
	LED20S/840				
	PSD WH				
910505101542	WL140V	-	3000 K	94 lm/W	3,350 lm
	LED34S/830				
	PSD WH				
911401847382	WL140V	-	3000 K	105 lm/W	1,275 lm
	LED12S/830				
	PSU WH				
911401847482	WL140V	-	4000 K	110 lm/W	1,350 lm
	LED12S/840				
	PSU WH				

Order Code	Full Product		Correlated Color Temperature (Nom)	Luminous Efficacy (rated) (Nom)	Luminous Flux
	Name	"All-in" Type			
911401847682	WL140V	-	4000 K	110 lm/W	2,200 lm
	LED20S/840				
	PSU WH				
911401851682	WL140V	-	4000 K	95 lm/W	1,250 lm
	LED12S/840				
	PSR MDU WH				
911401851882	WL140V	-	4000 K	95 lm/W	2,200 lm
	LED20S/840				
	PSR MDU WH				
911401851982	WL140V	-	3000 K	98 lm/W	2,950 lm
	LED34S/830				
	PSR MDU WH				

### Operating and Electrical

Order Code	Full Product Name	Power Consumption
911401848182	WL140V LED12_20S/827_830_840 PSU WH	20 W
911401848282	WL140V LED20_34S/827_830_840 PSU WH	33 W
910505101539	WL140V LED20S/840 PSD WH	22 W
910505101542	WL140V LED34S/830 PSD WH	35.5 W
911401847382	WL140V LED12S/830 PSU WH	12 W

Order Code	Full Product Name	Power Consumption
911401847482	WL140V LED12S/840 PSU WH	12 W
911401847682	WL140V LED20S/840 PSU WH	20 W
911401851682	WL140V LED12S/840 PSR MDU WH	13 W
911401851882	WL140V LED20S/840 PSR MDU WH	23 W
911401851982	WL140V LED34S/830 PSR MDU WH	30 W

### Temperature

Order Code	Full Product Name	Ambient temperature range
911401848182	WL140V LED12_20S/827_830_840 PSU	-20 to +40 °C
	WH	
911401848282	WL140V LED20_34S/827_830_840 PSU	-20 to +40 °C
	WH	
910505101539	WL140V LED20S/840 PSD WH	0 to +25 °C
910505101542	WL140V LED34S/830 PSD WH	0 to +25 °C

Order Code	Full Product Name	Ambient temperature range
911401847382	WL140V LED12S/830 PSU WH	-20 to +40 °C
911401847482	WL140V LED12S/840 PSU WH	-20 to +40 °C
911401847682	WL140V LED20S/840 PSU WH	-20 to +40 °C
911401851682	WL140V LED12S/840 PSR MDU WH	-20 to +40 °C
911401851882	WL140V LED20S/840 PSR MDU WH	-20 to +40 °C
911401851982	WL140V LED34S/830 PSR MDU WH	-20 to +40 °C

### Controls and Dimming

Order Code	Full Product Name	Dimmable
911401848182	WL140V LED12_20S/827_830_840 PSU WH	No
911401848282	WL140V LED20_34S/827_830_840 PSU WH	No
910505101539	WL140V LED20S/840 PSD WH	Yes
910505101542	WL140V LED34S/830 PSD WH	Yes
911401847382	WL140V LED12S/830 PSU WH	No

Order Code	Full Product Name	Dimmable
911401847482	WL140V LED12S/840 PSU WH	No
911401847682	WL140V LED20S/840 PSU WH	No
911401851682	WL140V LED12S/840 PSR MDU WH	Yes
911401851882	WL140V LED20S/840 PSR MDU WH	Yes
911401851982	WL140V LED34S/830 PSR MDU WH	Yes

### Emergency Operation

## CoreLine Wall-mounted

Order Code	Full Product Name	Emergency flux	Power consumption during Central DC emergency mode
911401848182	WL140V LED12_20S/827_830_840 PSU WH	-	-
911401848282	WL140V LED20_34S/827_830_840 PSU WH	-	-
910505101539	WL140V LED20S/840 PSED WH	350 lm	3 W
910505101542	WL140V LED34S/830 PSED WH	350 lm	3 W
911401847382	WL140V LED12S/830 PSU WH	-	-
911401847482	WL140V LED12S/840 PSU WH	-	-

Order Code	Full Product Name	Emergency flux	Power consumption during Central DC emergency mode
911401847682	WL140V LED20S/840 PSU WH	-	-
911401851682	WL140V LED12S/840 PSR MDU WH	-	-
911401851882	WL140V LED20S/840 PSR MDU WH	-	-
911401851982	WL140V LED34S/830 PSR MDU WH	-	-

### Initial Performance (IEC Compliant)

Order Code	Full Product Name	Initial chromaticity
911401848182	WL140V LED12_20S/827_830_840 PSU WH	(0.3818,0.3797) SDCM <5
911401848282	WL140V LED20_34S/827_830_840 PSU WH	(0.3818,0.3797) SDCM <5
910505101539	WL140V LED20S/840 PSED WH	(0.3818,0.3797) SDCM <3
910505101542	WL140V LED34S/830 PSED WH	(0.4338,0.4030) SDCM <3
911401847382	WL140V LED12S/830 PSU WH	(0.4338,0.4030) SDCM <3

Order Code	Full Product Name	Initial chromaticity
911401847482	WL140V LED12S/840 PSU WH	(0.3818,0.3797) SDCM <3
911401847682	WL140V LED20S/840 PSU WH	(0.3818,0.3797) SDCM <3
911401851682	WL140V LED12S/840 PSR MDU WH	(0.3818,0.3797) SDCM <3
911401851882	WL140V LED20S/840 PSR MDU WH	(0.3818,0.3797) SDCM <3
911401851982	WL140V LED34S/830 PSR MDU WH	(0.4338,0.4030) SDCM <3

### Application Conditions

Order Code	Full Product Name	Maximum dim level
911401848182	WL140V LED12_20S/827_830_840 PSU WH	Not applicable
911401848282	WL140V LED20_34S/827_830_840 PSU WH	Not applicable
910505101539	WL140V LED20S/840 PSED WH	1%
910505101542	WL140V LED34S/830 PSED WH	1%
911401847382	WL140V LED12S/830 PSU WH	Not applicable

Order Code	Full Product Name	Maximum dim level
911401847482	WL140V LED12S/840 PSU WH	Not applicable
911401847682	WL140V LED20S/840 PSU WH	Not applicable
911401851682	WL140V LED12S/840 PSR MDU WH	10%
911401851882	WL140V LED20S/840 PSR MDU WH	10%
911401851982	WL140V LED34S/830 PSR MDU WH	10%

