



Pacific Performer WT360C – excellent, efficient and easy

Pacific Performer

If you want to reduce your energy costs and join a growing number of companies doing their part for sustainability, then the Pacific Performer WT360C is for you. Featuring a fresh new design, this waterproof luminaire combines highly energy-efficient T5 lamp technology with a new reflector system offering excellent beam control. What's more, installation is quick and easy, thanks to the flexible ceiling brackets and smart end-caps. And because the light engine itself can be replaced, it will be possible to upgrade to LEDs in the future without having to change the entire luminaire.

Benefits

- Excellent optical performance
- Easy to install
- Light source upgradeable to LED

Features

- New reflector system providing excellent beam control
- Flexible ceiling brackets and smart end-cap for easy installation
- Light engine that can be upgraded to LED

Application

- Parking garages
- Industry
- Under-canopy lighting

Specifications

Pacific Performer

Type	WT360C
	WT361C (chemical resistant version)
Light source	Fluorescent:
	- 1 x or 2 x MASTER TL5 / G5 / 14, 24, 28, 35, 49, 54, 80 W
	- 1 x or 2 x MASTER TL5 ECO / G5 / 13, 20, 25, 32, 45, 50, 73 W
	- 1 x or 2 x MASTER TL5-Xtra / G5 / 49, 54, 80 W
Lamp included	Yes (light color 830 or 840)
Ballast	Electronic, High Frequency 220 - 240 V / 50 - 60 Hz:
	- Performer (HFP)
	- Performer, Xtra (HFP-XT)
	- Regulator, 1-10 V (HFR)
Reflector	- Regulator, DALI (HFD)
	High-gloss (C)
	White (L)

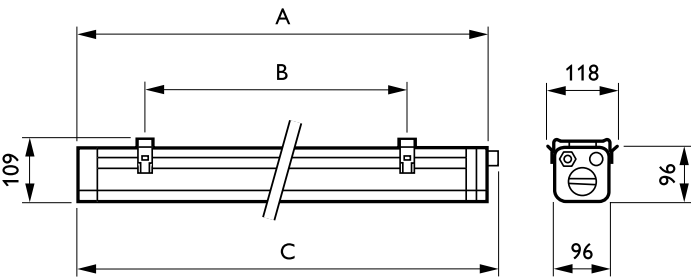
Options	Emergency lighting (integrated):
	- 1 hour (EL1), 3 hours (EL3)
	Through wiring (TW1 or TW3)
	Chemical resistant PVC free cabling (PVCFR)
	Separate switching (SW)
Connection	Integral male / female connectors
Material	Housing: polycarbonate (WT461C: with special coating for chemical resistance)
	Ceiling clips: stainless steel
Installation	Individual surface mounted
	Operating temperature: -15°C < T
Accessories	Suspension hooks, extra cable glands

Versions



Pacific Performer WT360/361C
waterproof luminaire for TL5
fluorescent lamp with high-gloss
mirror (C)

Dimensional drawing



Product	A	B	B	B	C
WT360C 1xTL5-35W/840 HFP	1600 mm	1250 mm	1150 mm	1200 mm	1621 mm
C					

Product details



Ceiling clip



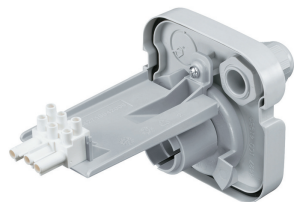
Opening knob



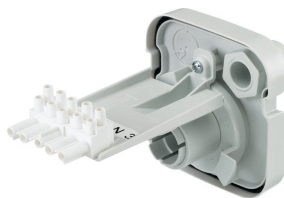
Gear tray locking handle



Gear tray locking handle



Electrical connector



Electrical connector

