



Product Description

Architectural MSD

Architectural MSD – single ended night colours The high luminous efficacy and optimal lamp filling of the single ended Architectural MSD lamps create high beam intensity and excellent colour rendering. While the compact arc of the lamp allows efficient beam control and high intensity. Ideal to illuminate architecture of all types at night.

Benefits

- High lumen output
- Low cost of ownership
- Excellent colours

Features

- Long lifetime
- Compact arc
- Excellent colour characteristics
- Universal burning position

Application

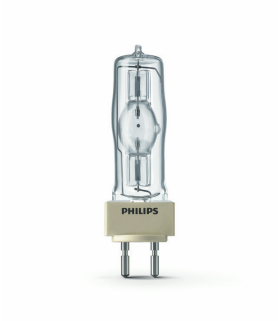
- Display lighting
- Architectural lighting
- Studio and disco lighting
- Fibre-optic lighting

Warnings and Safety

- A lamp breaking is extremely unlikely to have any impact on your health. If a lamp breaks, ventilate the room for 30 minutes and remove the parts, preferably with gloves. Put them in a sealed plastic bag and take it to your local waste facilities for recycling. Do not use a vacuum cleaner.

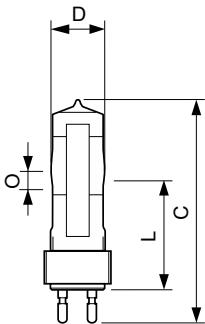
Architectural MSD

Versions



XPPR XDMSD 0013

Dimensional drawing



Product	D (max)	O	L (min)	L (max)	L	C (max)	F (max)	F	F (min)
MSD	42.5	14.0	84 mm	86 mm	85	183 mm	54 mm	53	52 mm
1200.1CT/3	mm	mm			mm			mm	

