



Product Description

UV-B Narrowband TL

Tubular or compact single-ended low-pressure mercury vapour fluorescent lamps

Benefits

- Minimum side effects like redness, itching and burns
- Shorter period of exposure and less erythema radiation than conventional UVB lamps
- Optimal therapeutic effect with minimum side effects
- Proven to be most effective on the skin

Features

- Emit radiation for therapeutic and other applications

Application

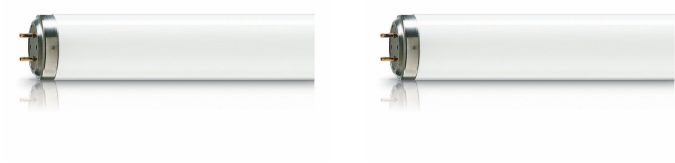
- Phototherapy in dermatology (psoriasis, SUP)
- These lamps produce UV-B radiation which is harmful to human skin and eyes. They are therefore only available for medical and industrial applications

Warnings and Safety

- A lamp breaking is extremely unlikely to have any impact on your health. If a lamp breaks, ventilate the room for 30 minutes and remove the parts, preferably with gloves. Put them in a sealed plastic bag and take it to your local waste facilities for recycling. Do not use a vacuum cleaner.

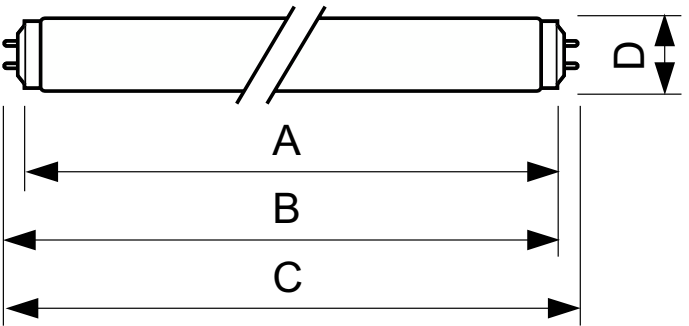
UV-B Narrowband TL

Versions

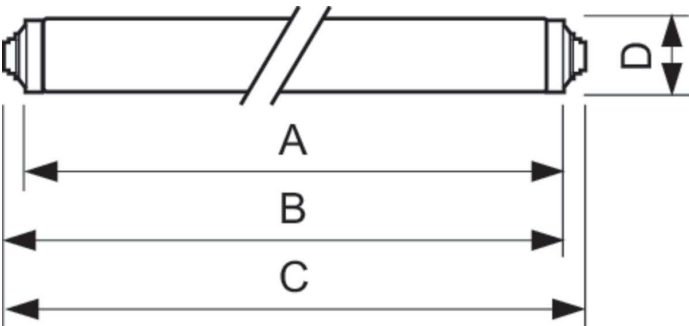


XPPR XUMTLRS G13

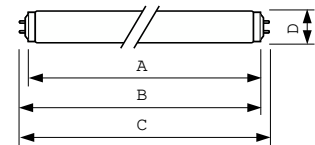
Dimensional drawing



Product	D (max)	A (max)	B (max)	B (min)	C (max)
TL 120W/01	40.5 mm	2,000 mm	2,007.1 mm	2,004.7 mm	2,014.2 mm



Product	D (max)	A (max)	B (max)	B (min)	C (max)
TL 100W/01 SLV/10	40.5 mm	1,763.8 mm	1,770.9 mm	1,768.5 mm	1,782.2 mm
TL F72T12 100W/01 UV-B	40.5 mm	1,755.7 mm	1,762.8 mm	1,760.4 mm	1,775.6 mm



Product	D (max)	A (max)	B (max)	B (min)	C (max)
TL 20W/01 RS SLV/25	40.5 mm	589.8 mm	596.9 mm	594.5 mm	604 mm

UV-B Narrowband TL

Light Technical	
Color Designation	Ultra Violet B
Color Code	01
Mechanical and Housing	
Bulb Shape	T38

General Information

Order Code	Full Product Name	Cap-Base
928010000130	TL 20W/01 RS SLV/25	G13
928035200101	TL 120W/01	G13

Order Code	Full Product Name	Cap-Base
927978500130	TL F72T12 100W/01 UV-B	RDC
928034900130	TL 100W/01 SLV/10	R17d (RDC)

Operating and Electrical

Order Code	Full Product Name	Lamp	Voltage (Nom)	Power Consumption
		Current (Nom)		
928010000130	TL 20W/01 RS SLV/25	0.37 A	59 V	19.3 W
928035200101	TL 120W/01	1.110 A	127 V	116 W

Order Code	Full Product Name	Lamp	Voltage (Nom)	Power Consumption
		Current (Nom)		
927978500130	TL F72T12 100W/01 UV-B	0.97 A	126 V	100 W
928034900130	TL 100W/01 SLV/10	0.97 A	126 V	100 W

Approval and Application

Order Code	Full Product Name	Mercury (Hg) Content (Nom)
928010000130	TL 20W/01 RS SLV/25	5.5 mg
928035200101	TL 120W/01	13.0 mg

Order Code	Full Product Name	Mercury (Hg) Content (Nom)
927978500130	TL F72T12 100W/01 UV-B	13.0 mg
928034900130	TL 100W/01 SLV/10	14.0 mg

