



The new generation of energy-saving tube lighting

Other LEDtube

Philips LEDtube integrates a LED light source into a traditional fluorescent form factor. This product is the ideal solution for uplampping in general lighting applications: it meets basic lighting requirements, offers significant energy savings, and is environmentally friendly.

Benefits

- Reduced operational cost thanks to lower energy consumption
- Lower maintenance cost thanks to 2-3 times longer lifetime than conventional lamps
- Fastest and easiest way to upgrade existing luminaires to LED technology; completely safe product and installation process

Features

- Highly energy-efficient
- Easy installation
- Conventional form factor to fit into existing luminaires
- No mercury

Application

- Hospitality, retail, office, industrial and home applications

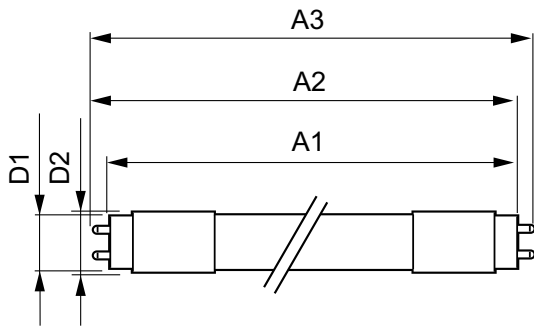
Other LEDtube

Versions



G13

Dimensional drawing



Product	D1	D2	A1	A2	A3
14T8/48-840/1F21/VLC	25.7 mm	26.3 mm	1198.1 mm	1205.2 mm	1212.3 mm
10/1					

