

# Simple, robust magnetic ballast

## HID-Basic ballasts for HPL and HPI(PLUS) lamps

The HID-Basic ballast is an impregnated (HID standard) electromagnetic ballast for HID lamps, for use in combination with an external ignitor.

### Benefits

- Limited volume of ballast coil; also lightweight
- Limited volume of ballast coil; also lightweight
- Simple installation and cabling
- Simple installation and cabling

### Features

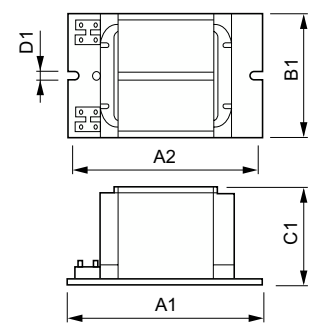
- Orthocyclic winding process
- Orthocyclic winding process
- Ballasts equipped with screw terminal blocks as standard
- Ballasts equipped with screw terminal blocks as standard
- Earthing-while-mounting facility (HID Standard ballasts)
- Earthing-while-mounting facility (HID Standard ballasts)
- Low wattage losses
- Low wattage losses

### Application

- For built-in applications for road and public lighting with HPL, HPI and HPI (Plus) lamps
- For built-in applications for road and public lighting with HPL, HPI and HPI (Plus) lamps
- HID-Basic ballasts should be restricted to built-in situations where relative humidity is limited.
- HID-Basic ballasts should be restricted to built-in situations where relative humidity is limited.

# HID-Basic ballasts for HPL and HPI(PLUS) lamps

## Dimensional drawing



Product	D1	C1	A1	A2	B1
BHLA 125L 200	6.3 mm	64.5 mm	120.0 mm	100.0 mm	75.0 mm
BHLE 250L 200 TS	6.2 mm	64.5 mm	165.0 mm	144.0 mm	75.5 mm
BHLE 400L 200 TS	6.2 mm	64.5 mm	165.0 mm	144.0 mm	75.5 mm

