



# Simple, robust magnetic ballast

## HID-Basic ballasts for HPL and HPI(PLUS) lamps

The HID-Basic ballast is an impregnated (HID standard) electromagnetic ballast for HID lamps, for use in combination with an external ignitor.

### Benefits

- Limited volume of ballast coil; also lightweight
- Simple installation and cabling

### Features

- Orthocyclic winding process
- Ballasts equipped with screw terminal blocks as standard
- Earthing-while-mounting facility (HID Standard ballasts)
- Low wattage losses

### Application

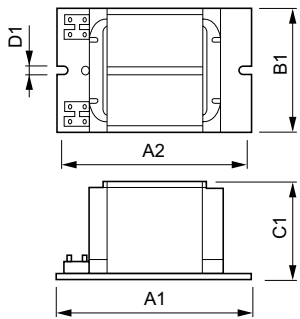
- For built-in applications for road and public lighting with HPL, HPI and HPI (Plus) lamps
- HID-Basic ballasts should be restricted to built-in situations where relative humidity is limited.

# HID-Basic ballasts for HPL and HPI(PLUS) lamps

## Versions



## Dimensional drawing



Product					
BHLE 250L 202					
BHLE 400L 202					
BHL 250L 200	6.2 mm	64.5 mm	125.0 mm	110.0 mm	75.5 mm
BHL 400L 202	6.3 mm	64.5 mm	150.0 mm	134.0 mm	75.5 mm

### Operating and Electrical

Input Frequency 50 Hz

## Operating and Electrical

Order Code	Full Product Name	Input Voltage
913710100442	BHL 250L 200	220 V
913710102650	BHL 400L 202	230 V

Order Code	Full Product Name	Input Voltage
913713017550	BHLE 250L 202	230 V
913713017650	BHLE 400L 202	230 V

## System characteristics

Order Code	Full Product Name	Rated Ballast-Lamp Power
913710100442	BHL 250L 200	250 W
913710102650	BHL 400L 202	400 W

Order Code	Full Product Name	Rated Ballast-Lamp Power
913713017550	BHLE 250L 202	250 W
913713017650	BHLE 400L 202	400 W

## HID-Basic ballasts for HPL and HPI(PLUS) lamps

