

Simple, robust magnetic ballast

HID-High Power ballasts for MH lamps

The HID High-Power ballast is an impregnated (HID standard) electromagnetic copper/iron ballast for use with an external ignitor for HID lamps.

Benefits

- Limited volume of ballast coil; also lightweight
- Simple installation and cabling

Features

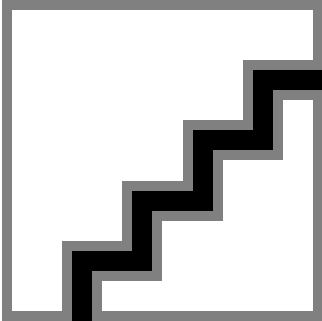
- Orthocyclic winding process
- Ballasts equipped with screw terminal blocks as standard
- Earthing-while-mounting facility (HID Standard ballasts)
- Low watt losses

Application

- For use with MHN lamps in sports, public, area and floodlighting
- HID-Basic ballasts should be restricted to built-in situations where relative humidity is limited.

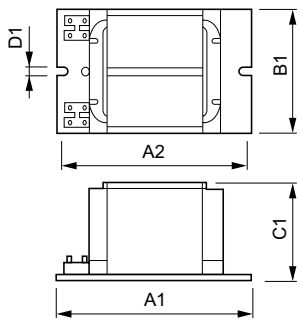
HID-High Power ballasts for MH lamps

Versions



BMH 1800L 202

Dimensional drawing



Product	D1	C1	A1	A2	B1
BMH 2000L 2114	7 mm	102 mm	215.0 mm	181.0 mm	117.0 mm
BMH 1800L 202	7 mm	102.0 mm	234 mm	185.5 mm	120.0 mm
BMH 2000L 2050	7 mm	102.0 mm	234 mm	185.5 mm	120.0 mm

Operating and Electrical

Order Code	Full Product Name	Input Frequency	Input Voltage
913710107142	BMH 1800L 202	50 Hz	230 V
913710107242	BMH 2000L 2050	50 Hz	400 V

Order Code	Full Product Name	Input Frequency	Input Voltage
913713201767	BMH 2000L 2114	-	400 V

System characteristics

Order Code	Full Product Name	Rated Ballast-Lamp Power
913710107142	BMH 1800L 202	1800 W
913710107242	BMH 2000L 2050	2000 W

Order Code	Full Product Name	Rated Ballast-Lamp Power
913713201767	BMH 2000L 2114	2000 W

HID-High Power ballasts for MH lamps

