



# Digital ignitors for silent operation

## Electronic parallel ignitor for HID lamp circuits

HID ignitors for parallel systems

### Benefits

- Will only work with semi-parallel ballasts
- Silent operation
- Can operate remotely at considerable distance from the lamp

### Features

- Parallel ignitor will only work in parallel circuits and must be matched with the relevant ballast
- Ignitors equipped with screw terminal blocks as standard
- Lightweight and compact products
- Current flows through ignitor only at lamp start-up

### Application

- Outdoor lighting (most popular applications: road, sports and area lighting)

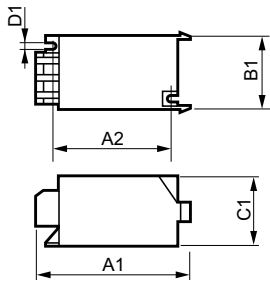
# Electronic parallel ignitor for HID lamp circuits

## Versions



SI52 IGNITOR

## Dimensional drawing



Product
SI 52
SI 51 Plus

