



The new generation of energy-saving T5 tube lighting

MASTER LEDtube InstantFit HF T5

Philips MASTER LEDtube InstantFit T5 integrates a LED light source into a traditional fluorescent form factor. Its unique design creates a perfectly uniform visual appearance which cannot be distinguished from traditional fluorescent. The Philips MASTER LEDtube InstantFit T5 is the ideal solution for customers who have higher light output requirements and want to maximize value over lifetime. Full energy savings & longer lifetime result in attractive payback times and TCO benefits.

Benefits

- Reduced operational cost thanks to lower energy consumption
- Lower maintenance cost thanks to 2-3 times longer lifetime than normal fluorescent tubes
- Fastest and easiest way to upgrade existing luminaire to LED technology, with a 100%- safe installation process

Features

- Retrofit replacement of existing T5 lamps on HF ballast installations
- HF compatibility: no wires to replace, no hassle changing drivers; our InstantFit solution works with High Frequency electronic ballasts, making it easy and safe for all installation methods
- Electronic Pin safety: with Philips products you can safely touch the other end-cap when installing the tube. The integrated driver is also safely isolated from touchable parts. Philips LED tubes adhere to all UL and IEC pin safety requirements

Application

- The ideal solution for demanding applications with a need for extra energy savings: office, school, retail

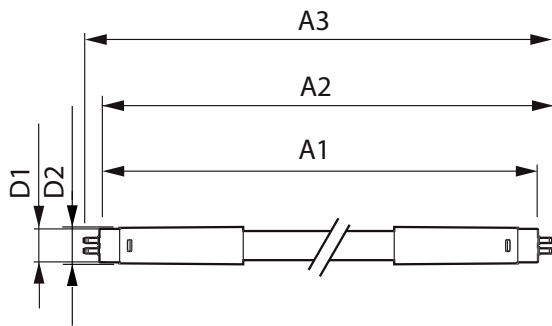
MASTER LEDtube InstantFit HF T5

Versions



G5

Dimensional drawing



Product	D1	D2	A1	A2	A3
Master LEDtube HF 1200mm HO 26W 865 T5	15.2 mm	21 mm	1147.8 mm	1154.9 mm	1162 mm

