



SlimBlend Square - High performance, advanced control

SlimBlend Square, recessed

Office norm-compliant lighting with good quality of light is in demand. Moreover, there is also an increasing need for comfort-enhancing effects such as diffused lighting and lighting smoothly blending into the ceiling architecture. That's why 'surface of light' solutions are becoming more and more popular. But parallel to these needs, are the demands to reduce energy and maintenance costs. SlimBlend answers all these needs and more. Not only does it provide glare-free comfort with a diffuse effect and clutter-free aesthetics thanks to integrated control options, it also creates a special blending of light. It uses the 'trapped' light under the masking to create a subtle glow, with a soft transition to the edge, lowering the brightness perception and blending the light into the ceiling. SlimBlend can also be part of a connected lighting system and integrated into the IT infrastructure enabling data on usage to be collected to help reduce energy costs and enhance employee comfort further. Also, thanks to the slim design, it enables technical equipment to be more easily installed in the plenum. Moreover, thanks to the variety of ways of mounting, various ceiling types can take advantage of this luminaire family. SlimBlend comes in square, rectangular and can be either recessed, surface-mounted, suspended. It offers a good balance between initial cost and ROI, making it the ideal choice for delivering excellent quality of light and a fast Return on Investment for offices.

Benefits

- Unique combination of distinguished look & feel and performance
- Helps declutter ceiling architectures
- Integrated sensor makes it ready for connected lighting systems
- Reduced installation time & cost

SlimBlend Square, recessed

Features

- Best-in-class efficacy, supporting green building design
- Good balance between initial cost & ROI, payback within 3 years
- Integrated sensor for (connected) lighting systems enabling additional energy saving, data collection
- Light floats towards edges of luminaire to ensure it, blends into the ceiling architecture
- Comfortable, glare-free office compliant lighting using Micro Lens Optics

Application

- Offices
- Healthcare
- Education

Specifications

Type	RC400B(module size 600x600 mm versions) RC402B (module size 625x625 mm versions)
Ceiling type	Exposed- and symmetrical concealed T-bar ceiling and plaster (board) ceiling
Ceiling grid	Module size in length: 600 mm Module size in length: 625 mm
Light source	Non-replaceable LED module
Power (+/-10%)	25-40 W (depending on type)
Beam angle	92°
Luminous flux	2800 Lumen 3600 Lumen 4200 Lumen
Correlated Color Temperature	3000K and 4000K
Color Rendering Index	>80
Lumen maintenance at median useful life* 50000 h	L80
Control gear failure rate at median useful life 50000 h	5%
Performance Ambient Temperature Tq	+25 °C

Operating temperature range	+10 to +40 °C
Driver	Built-in
Power/Data supply	PSU PSD PSD-CLO PSD-T PoE
Mains voltage	220-240 V / 50-60 Hz
Dimming	Dali, PoE
Material	Housing: coated steel and plastic Optics: Micro Lens Optics (MLO)
Color	White
Optical cover	Micro Lens Optic (MLO)
Connection	PIP or W
Maintenance	Optical module sealed for life; no internal cleaning required
Installation	Individual; lay-in in exposed ceiling grids or with ceiling brackets in concealed ceiling grids or plasterboard ceilings
Through-wiring possible	Yes (depending on type)
Accessories	Concealed, Plaster, Suspended & Surface Mounted kits

SlimBlend Square, recessed

Versions



SlimBlend recessed mod. 600

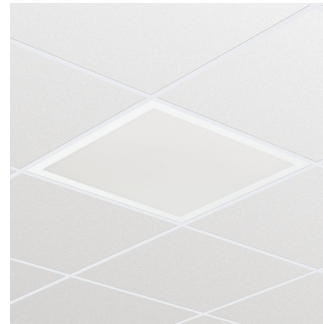


SlimBlend recessed mod. 600

Product details



SlimBlend_RR-RC400B-3DPP.tif



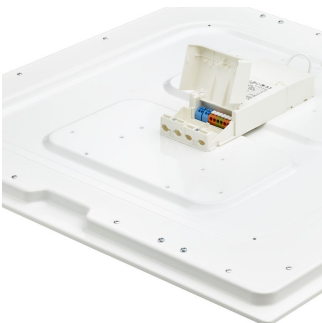
SlimBlend_SR-RC400B_VPC_T-11DPP.tif



SlimBlend_RR-RC400B-3DPP.tif



SlimBlend_SR-RC400B_VPC_T-15DPP.tif



SlimBlend_SR-RC400B-9DPP.tif



SlimBlend_SR-RC400B-10DPP.tif

SlimBlend Square, recessed

Product details



SlimBlend_SR-RC400B-3DPP.tif



SlimBlend_SR-RC400B-4DPP.tif



SlimBlend_RR-RC400B-1DPP.tif



SlimBlend_SR-RC400B-1DPP.tif

SlimBlend_SR-RC400B-5DPP.tif



SlimBlend_RR-RC400B-1DPP.tif

SlimBlend_SR-RC400B-1DPP.tif



SlimBlend_SR-RC400B-5DPP.tif



SlimBlend Square, recessed

Product details



SlimBlend_RR-RC400B-8DPP.tif



SlimBlend_SR-RC400B-11DPP.tif



SlimBlend_SR-RC400B-12DPP.tif



SlimBlend_SR-RC400B-3DPP.tif

SlimBlend_SR-RC400B-9DPP.tif



SlimBlend_SR-RC400B_VPC_ACL_EXP-10DPP.tif



SlimBlend_SR-RC400B_VPC_ACL_EXP-10DPP.tif



SlimBlend Square, recessed

Application Conditions

Ambient temperature range	+10 to +40 °C
Suitable for random switching	Yes

Approval and Application

Mech. impact protection code	IK02
Ingress protection code	IP20

Operating and Electrical

Input Voltage	220-240 V
---------------	-----------

General Information

Beam angle of light source	120 °
CE mark	CE mark
Driver included	Yes
ENEC mark	ENEC mark
Flammability mark	F
Glow-wire test	650/5
Light source replaceable	No
Number of gear units	1 unit
Optic type	No

Initial Performance (IEC Compliant)

Init. Color Rendering Index	80
Luminous flux tolerance	+/-10%

Mechanical and Housing

Color	White
-------	-------

Application Conditions

Order Code	Full Product Name	Maximum dim level
17457600	RC400B LED36S/830 PSD W60L60 VPC PIP	1%
17458300	RC400B LED36S/840 PSD W60L60 VPC PIP	1%
17461300	RC400B LED36S/830 PSD W60L60 VPC ACL PIP	1%
17692100	RC400B LED36S/830 PSU W60L60 VPC PIP	-
17693800	RC400B LED36S/840 PSU W60L60 VPC PIP	-
17701000	RC400B LED36S/840 POE W60L60 VPC	1%
17703400	RC400B LED42S/840 PSU W60L60 VPC PIP	-
17722500	RC402B LED42S/830 PSD W62L62 VPC PIP	1%
17723200	RC402B LED42S/840 PSD W62L62 VPC PIP	1%
17462000	RC400B LED36S/840 PSD W60L60 VPC ACL PIP	1%
17702700	RC400B LED36S/840 POE W60L60 VPC MSE	1%

Controls and Dimming

Order Code	Full Product Name	Dimmable
17457600	RC400B LED36S/830 PSD W60L60 VPC PIP	Yes
17458300	RC400B LED36S/840 PSD W60L60 VPC PIP	Yes
17461300	RC400B LED36S/830 PSD W60L60 VPC ACL PIP	Yes
17692100	RC400B LED36S/830 PSU W60L60 VPC PIP	No
17693800	RC400B LED36S/840 PSU W60L60 VPC PIP	No
17701000	RC400B LED36S/840 POE W60L60 VPC	Yes

Order Code	Full Product Name	Dimmable
17703400	RC400B LED42S/840 PSU W60L60 VPC PIP	No
17722500	RC402B LED42S/830 PSD W62L62 VPC PIP	Yes
17723200	RC402B LED42S/840 PSD W62L62 VPC PIP	Yes
17462000	RC400B LED36S/840 PSD W60L60 VPC ACL PIP	Yes
17702700	RC400B LED36S/840 POE W60L60 VPC MSE	Yes

General Information

Order Code	Full Product Name	Product	
		Protection class IEC	Family Code
17457600	RC400B LED36S/830 PSD W60L60 VPC PIP	Safety class II (II)	RC400B
17458300	RC400B LED36S/840 PSD W60L60 VPC PIP	Safety class II (II)	RC400B
17461300	RC400B LED36S/830 PSD W60L60 VPC ACL PIP	Safety class I (I)	RC400B
17692100	RC400B LED36S/830 PSU W60L60 VPC PIP	Safety class II (II)	RC400B

Order Code	Full Product Name	Product	
		Protection class IEC	Family Code
17693800	RC400B LED36S/840 PSU W60L60 VPC PIP	Safety class II (II)	RC400B
17701000	RC400B LED36S/840 POE W60L60 VPC	Safety class III (III)	RC400B
17703400	RC400B LED42S/840 PSU W60L60 VPC PIP	Safety class II (II)	RC400B
17722500	RC402B LED42S/830 PSD W62L62 VPC PIP	Safety class II (II)	RC402B

SlimBlend Square, recessed

Order Code	Full Product Name	Protection class IEC	Product
			Family Code
17723200	RC402B LED42S/840 PSD W62L62 VPC PIP	Safety class II (II)	RC402B
17462000	RC400B LED36S/840 PSD W60L60 VPC ACL PIP	Safety class I (I)	RC400B

Order Code	Full Product Name	Protection class IEC	Product
			Family Code
17702700	RC400B LED36S/840 POE W60L60 VPC MSE	Safety class III (III)	RC400B

Initial Performance (IEC Compliant) (1/2)

Order Code	Full Product Name	Initial chromaticity	Init. Corr. Color Temperature	Initial LED luminaire efficacy	Initial luminous flux
				luminaire efficacy	flux
17457600	RC400B LED36S/830 PSD W60L60 VPC PIP	(0.43, 0.40)	3000 K	100 lm/W	3600 lm
17458300	RC400B LED36S/840 PSD W60L60 VPC PIP	(0.38, 0.38)	4000 K	107 lm/W	3600 lm
17461300	RC400B LED36S/830 PSD W60L60 VPC ACL PIP	(0.43, 0.40)	3000 K	100 lm/W	3600 lm
17692100	RC400B LED36S/830 PSU W60L60 VPC PIP	(0.43, 0.40)	3000 K	100 lm/W	3600 lm
17693800	RC400B LED36S/840 PSU W60L60 VPC PIP	(0.38, 0.38)	4000 K	107 lm/W	3600 lm
17701000	RC400B LED36S/840	(0.38, 0.38)	4000 K	109 lm/W	3600 lm

Order Code	Full Product Name	Initial chromaticity	Init. Corr. Color Temperature	Initial LED luminaire efficacy	Initial luminous flux
				luminaire efficacy	flux
17703400	RC400B LED42S/840 PSU W60L60 VPC PIP	(0.38, 0.38)	4000 K	104 lm/W	4200 lm
17722500	RC402B LED42S/830 PSD W62L62 VPC PIP	(0.43, 0.40)	3000 K	101 lm/W	4200 lm
17723200	RC402B LED42S/840 PSD W62L62 VPC PIP	(0.38, 0.38)	4000 K	114 lm/W	4200 lm
17462000	RC400B LED36S/840 PSD W60L60 VPC ACL PIP	(0.38, 0.38)	4000 K	107 lm/W	3600 lm
17702700	RC400B LED36S/840 POE W60L60 VPC MSE	(0.38, 0.38)	4000 K	109 lm/W	3600 lm

Initial Performance (IEC Compliant) (2/2)

Order Code	Full Product Name	Initial input power
17457600	RC400B LED36S/830 PSD W60L60 VPC PIP	36 W
17458300	RC400B LED36S/840 PSD W60L60 VPC PIP	33.5 W
17461300	RC400B LED36S/830 PSD W60L60 VPC ACL PIP	36 W
17692100	RC400B LED36S/830 PSU W60L60 VPC PIP	36 W
17693800	RC400B LED36S/840 PSU W60L60 VPC PIP	33.5 W
17701000	RC400B LED36S/840 POE W60L60 VPC	33 W

Order Code	Full Product Name	Initial input power
17703400	RC400B LED42S/840 PSU W60L60 VPC PIP	40.5 W
17722500	RC402B LED42S/830 PSD W62L62 VPC PIP	41.5 W
17723200	RC402B LED42S/840 PSD W62L62 VPC PIP	37 W
17462000	RC400B LED36S/840 PSD W60L60 VPC ACL PIP	33.5 W
17702700	RC400B LED36S/840 POE W60L60 VPC MSE	33 W

Mechanical and Housing

Order Code	Full Product Name	Diameter
17457600	RC400B LED36S/830 PSD W60L60 VPC PIP	-
17458300	RC400B LED36S/840 PSD W60L60 VPC PIP	-
17461300	RC400B LED36S/830 PSD W60L60 VPC ACL PIP	-
17692100	RC400B LED36S/830 PSU W60L60 VPC PIP	-

Order Code	Full Product Name	Diameter
17693800	RC400B LED36S/840 PSU W60L60 VPC PIP	-
17701000	RC400B LED36S/840 POE W60L60 VPC	-
17703400	RC400B LED42S/840 PSU W60L60 VPC PIP	-
17722500	RC402B LED42S/830 PSD W62L62 VPC PIP	-

SlimBlend Square, recessed

Order Code	Full Product Name	Diameter
17723200	RC402B LED42S/840 PSD W62L62 VPC PIP	-
17462000	RC400B LED36S/840 PSD W60L60 VPC ACL PIP	-

Order Code	Full Product Name	Diameter
17702700	RC400B LED36S/840 POE W60L60 VPC MSE	-

