



Simple and flexible solution to design modern light lines in professional and retail spaces

PlainView, recessed

Light line solutions are always in fashion. therefore we know that delivering innovation in this field is crucial. PlainView is a modern looking, neat luminaire offering comfortable, good quality lighting and can also work as a design element. The luminaires offer high quality specifications and flexibility with different options for lumen packages. Thanks to these features and benefits, PlainView delivers ideal lighting in the non-working areas of professional spaces such as offices, educational institutes, and also the welcoming areas and entrances of retail spaces.

Benefits

- Clean and uniform light
- Multiple application use
- Easy to install and maintain
- Long lasting, reliable luminaire

Features

- Homogeneous exit window
- Can create standalone and continuous lines of light and offers recessed and suspended variants
- Same modules are used for standalone and continuous light lines providing flexibility and making installation easier
- Delivers Philips quality

PlainView, recessed

Application

- Office – circulation and common areas
- Education – circulation and common areas
- Retail – general lighting in stores
- Healthcare – circulation and common areas

Specifications

Ambient Temperature	+10 to +40 °C
Main color of the Luminaire	White
Dimming	No, yes
Driver	Power supply unit with DALI interface (PSD) Power supply unit (PSU)
Initial correlated color temperature	4000 K
Initial input power	40 W, 50 W
Initial LED luminaire efficacy	90, 95 lm/W

Initial luminous flux	3800 lm, 4800 lm
Input frequency	50 to 60 Hz
Input voltage	220 to 240 V
Inrush current (A)	19, 22 A
Light source color	840 neutral white
Light source replaceable	No
Material	Housing: aluminum
Material	Reflector: -
Warranty period	5 years

Versions



Product details



PlainView_Recessed-
RC140B-1DPP.tif



PlainView_Recessed-
RC140B-2DPP.tif

PlainView, recessed

Product details



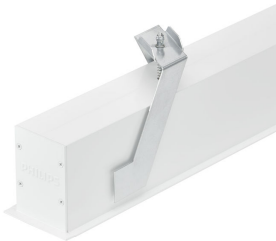
PlainView_Recessed-RC140B-3DPP.tif



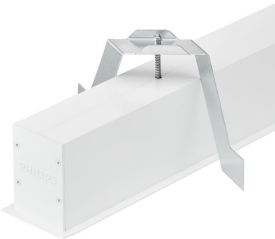
PlainView_Recessed-RC140B-4DPP.tif



PlainView_Recessed-RC140B-5DPP.tif



PlainView_Recessed-RC140B-6DPP.tif



PlainView_Recessed-RC140B-7DPP.tif



PlainView_Recessed-RC140B-8DPP.tif



PlainView_Recessed-RC140B-9DPP.tif

PlainView, recessed

Application Conditions

Ambient temperature range	+10 to +40 °C
Suitable for random switching	Yes

Approval and Application

Mech. impact protection code	IK02
Ingress protection code	IP40

Operating and Electrical

Input Voltage	220 to 240 V
---------------	--------------

General Information

CE mark	CE mark
Protection class IEC	Safety class I (I)
Driver included	Yes
ENEC mark	-
Flammability mark	F
Glow-wire test	650/30
Light source replaceable	No
Number of gear units	1 unit
Optic type	No
Service tag	Yes

Initial Performance (IEC Compliant)

Initial chromaticy	(0.38, 0.38) SDCM <3
Init. Corr. Color Temperature	4000 K
Init. Color Rendering Index	≥80
Luminous flux tolerance	+/-10%

Mechanical and Housing

Color	White
-------	-------

Application Conditions

Order Code	Full Product Name	Maximum dim level
38023699	RC140B LED38S/840 PSD PCV PI5 L1150	1%
38024399	RC140B LED38S/840 PSU PCV PI3 L1150	-
38027499	RC140B LED48S/840 PSD PCV PI5 L1430	1%
38028199	RC140B LED48S/840 PSU PCV PI3 L1430	-

Controls and Dimming

Order Code	Full Product Name	Dimmable
38023699	RC140B LED38S/840 PSD PCV PI5 L1150	Yes
38024399	RC140B LED38S/840 PSU PCV PI3 L1150	No

Order Code	Full Product Name	Dimmable
38027499	RC140B LED48S/840 PSD PCV PI5 L1430	Yes
38028199	RC140B LED48S/840 PSU PCV PI3 L1430	No

Initial Performance (IEC Compliant)

Order Code	Full Product Name	Initial LED luminaire efficacy	Initial luminous flux	Initial input power
38023699	RC140B LED38S/840 PSD PCV PI5 L1150	90 lm/W	3800 lm	40 W
38024399	RC140B LED38S/840 PSU PCV PI3 L1150	90 lm/W	3800 lm	40 W

Order Code	Full Product Name	Initial LED luminaire efficacy	Initial luminous flux	Initial input power
38027499	RC140B LED48S/840 PSD PCV PI5 L1430	95 lm/W	4800 lm	50 W
38028199	RC140B LED48S/840 PSU PCV PI3 L1430	95 lm/W	4800 lm	50 W

PlainView, recessed

