



A simple and flexible solution to designing modern light lines in professional and retail spaces

PlainView, recessed

Light line solutions are always in fashion. therefore we know that delivering innovation in this field is crucial. PlainView is a modern-looking, neat luminaire offering comfortable, good-quality lighting, which can also work as a design element. The luminaires offer high-quality specifications and flexibility with different options for lumen packages. Thanks to these features and benefits, PlainView delivers ideal lighting in the non-working areas of professional spaces such as offices, educational institutes and also the welcoming areas and entrances of retail spaces.

Benefits

- Clean and uniform light
- Multiple application use
- Easy to install and maintain
- A long-lasting, reliable luminaire

PlainView, recessed

Features

- Homogeneous exit window
- Can create standalone and continuous lines of light and offers recessed and suspended variants
- The same modules are used for standalone and continuous light lines, providing flexibility and making installation easier
- Delivers Philips quality

Application

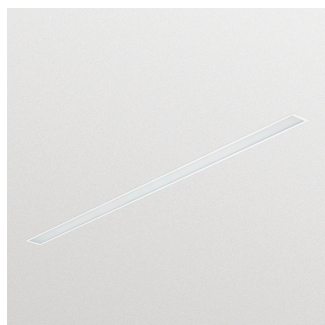
- Office – circulation and common areas
- Education – circulation and common areas
- Retail – general lighting in shops
- Healthcare – circulation and common areas

Specifications

Ambient Temperature	+10 to +40 °C
Main colour of the luminaire	White
Dimming	No, yes
Driver	Power supply unit with DALI interface (PSD) Power supply unit (PSU)
Initial correlated colour temperature	4000 K
Initial input power	50 W
Initial LED luminaire efficacy	95 lm/W

Initial luminous flux	4800 lm
Input frequency	50 to 60 Hz
Input voltage	220 to 240 V
Inrush current (A)	19, 22 A
Light source colour	840 neutral white
Light source replaceable	No
Material	Housing: aluminium
Material	Reflector: -
Warranty period	5 years

Versions



PlainView, recessed

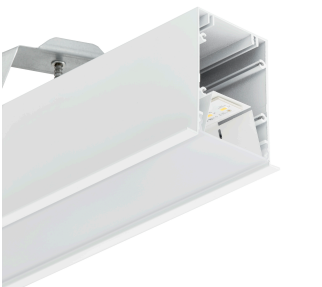
Product details



PlainView_Recessed-RC140B-1DPP.tif



PlainView_Recessed-RC140B-2DPP.tif



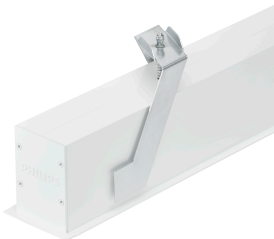
PlainView_Recessed-RC140B-3DPP.tif



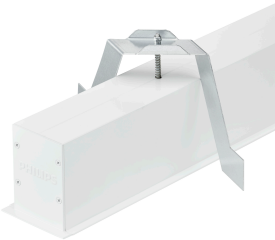
PlainView_Recessed-RC140B-4DPP.tif



PlainView_Recessed-RC140B-5DPP.tif



PlainView_Recessed-RC140B-6DPP.tif



PlainView_Recessed-RC140B-7DPP.tif



PlainView_Recessed-RC140B-8DPP.tif

PlainView, recessed

Product details



PlainView_Recessed-
RC140B-9DPP.tif

Application Conditions

Ambient temperature range	+10 to +40 °C
Suitable for random switching	Yes

Approval and Application

Mech. impact protection code	IK02
Ingress protection code	IP40

Operating and Electrical

Input Voltage	220 to 240 V
---------------	--------------

General Information

CE mark	CE mark
Protection class IEC	Safety class I
Driver included	Yes
ENEC mark	-
Flammability mark	F
Glow-wire test	Temperature 650 °C, duration 30 s
Light source replaceable	No
Number of gear units	1 unit
Optic type	No

Initial Performance (IEC Compliant)

Initial chromaticity	(0.38, 0.38) SDCM <3
Init. Corr. Colour Temperature	4000 K
Init. Colour rendering index	≥80
Initial LED luminaire efficacy	95 lm/W
Initial luminous flux	4800 lm
Luminous flux tolerance	+/-10%
Initial input power	50 W

Mechanical and Housing

Colour	White
--------	-------

Application Conditions

Order Code	Full Product Name	Maximum dimming level
38027499	RC140B LED48S/840 PSD PCV PI5 L1430	1%
38028199	RC140B LED48S/840 PSU PCV PI3 L1430	-

Controls and Dimming

Order Code	Full Product Name	Dimmable
38027499	RC140B LED48S/840 PSD PCV PI5 L1430	Yes

PlainView, recessed

Order Code	Full Product Name	Dimmable
38028199	RC140B LED48S/840 PSU PCV PI3 L1430	No

