



Flexible and tunable white

FlexCove G3

Sustainable and flexible offering with excellent optical performance

Benefits

- Energy efficient
- Great diversity
- Dimming compatibility

Features

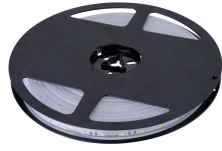
- System efficacy up to 105lm/W
- 3 lumen options, 4 CCTs
- Tunable white 1000~4000k

Application

- Hotel
- Retail
- Restaurant

FlexCove G3

Versions



FlexCove

FlexCove

Accessories



FlexCove

Ordercode 911401760352,
911401760362

FlexCove

Ordercode 911401760412



FlexCove

Ordercode 911401760472



FlexCove G3

Application Conditions

Ambient temperature range	-20 to +35 °C
Maximum dim level	Not applicable

Controls and Dimming

Dimmable	No
----------	----

Operating and Electrical

Input Voltage	24 DC V
---------------	---------

General Information

Beam angle of light source	120 °
CE mark	-
Protection class IEC	Safety class III (III)
Optical cover/lens type	No
Driver included	No
ENEC mark	-
Flammability mark	NO
Glow-wire test	NO
Light source replaceable	No
Number of gear units	-
Optic type	Symmetrical

Initial Performance (IEC Compliant)

Luminous flux tolerance	+/-10%
-------------------------	--------

Approval and Application

Order Code	Full Product Name	Mech. impact protection code	Ingress protection code
911401759452	LS170S LED8 840 IP20 L5000	IK00	IP20
911401759712	LS170S LED4 927 IP20 L5000	IK00	IP20
911401759562	LS170S LED4 827 IP44 L5000	IK03	IP44
911401759752	LS170S LED4 927 IP44 L5000	IK03	IP44
911401759762	LS170S LED8 927 IP44 L5000	IK03	IP44

Initial Performance (IEC Compliant) (1/2)

Order Code	Full Product Name	Initial chromaticity	Init. Corr. Color Temperature	Init. Color Rendering Index	Initial LED luminaire efficacy
911401759452	LS170S LED8 840 IP20 L5000	0.38;0.38; SDCM 3	4000 K	80	105 lm/W
911401759712	LS170S LED4 927 IP20 L5000	0.463;0.42; SDCM 3	2700 K	90	85 lm/W
911401759562	LS170S LED4 827 IP44 L5000	0.4659; 0.421; SDCM 3	2700 K	80	95 lm/W

Order Code	Full Product Name	Initial chromaticity	Init. Corr. Color Temperature	Init. Color Rendering Index	Initial LED luminaire efficacy
911401759752	LS170S LED4 927 IP44 L5000	0.4659; 0.421; SDCM 3	2700 K	90	85 lm/W
911401759762	LS170S LED8 927 IP44 L5000	0.4659; 0.421; SDCM 3	2700 K	90	75 lm/W

Initial Performance (IEC Compliant) (2/2)

Order Code	Full Product Name	Initial luminous flux	Initial input power
911401759452	LS170S LED8 840 IP20 L5000	800 lm	37 W
911401759712	LS170S LED4 927 IP20 L5000	400 lm	21 W
911401759562	LS170S LED4 827 IP44 L5000	400 lm	19 W

Order Code	Full Product Name	Initial luminous flux	Initial input power
911401759752	LS170S LED4 927 IP44 L5000	400 lm	21 W
911401759762	LS170S LED8 927 IP44 L5000	800 lm	42 W

Mechanical and Housing

Order Code	Full Product Name	Color
911401759452	LS170S LED8 840 IP20 L5000	White

Order Code	Full Product Name	Color
911401759712	LS170S LED4 927 IP20 L5000	White

FlexCove G3

Order Code	Full Product Name	Color
911401759562	LS170S LED4 827 IP44 L5000	Clear
911401759752	LS170S LED4 927 IP44 L5000	Clear

Order Code	Full Product Name	Color
911401759762	LS170S LED8 927 IP44 L5000	Clear

