



Smart Post-top G3-BGP161

Smart Post-top G3

Smart Post Top G3 inherits the classic look and style of the previous generation with improved system efficacy and light quality. The Smart Post Top G3 optimized optical design increases both horizontal and vertical uniformity. The highly efficient thermal system design ensures maximum heat transfer and longer LED service life. This reliable luminaire system operates well in both low and high temperature environments. It offers more than 11 years expected life, reducing maintenance frequency and cost (based on a 50,000 hour rated life and 12 hours operation per day). It provides a comfortable and safe atmosphere to gardens, residential areas, courtyards, side streets, squares, parks & playgrounds.

Benefits

- Outstanding Lighting Performance
- Reliable Quality
- Environment Friendly

Features

- SDCM \leq 4 high uniformity, up to 92 lm/w, high system efficacy, up to 2500lm high brightness, CRI $>$ 70 shows true colour.
- 50K hours lifetime @L70B50 IP65, IK07, water and shock resistant Corrosion resistant painting, aluminum housing, anti UV polycarbonate optics.
- Compliant with the material restriction requirements of RoHS significant energy saving compared to conventional lighting.

Application

- residential area, path way, park, etc.

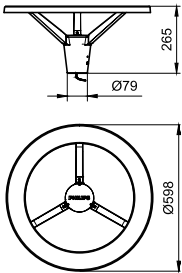
Smart Post-top G3

Versions



Smart Post top G3 BGP161

Dimensional drawing



Smart Post-top G3

General Information

CE mark	-
Driver included	Yes
Flammability mark	For mounting on normally flammable surfaces
Lamp family code	-
Light source replaceable	Yes
Number of gear units	1 unit

Light Technical

Luminaire light beam spread	-
Optical cover type	Acrylate cover and semi-matt high-reflective optic
Color rendering index (CRI)	70
Optic type outdoor	Symmetrical
Standard tilt angle side entry	-
Standard tilt angle posttop	-
Upward light output ratio	0

Controls and Dimming

Dimmable	No
----------	----

Mechanical and Housing

Housing Color	Dark gray
---------------	-----------

Approval and Application

Mech. impact protection code	IK07
Ingress protection code	IP65
Surge Protection (Common/Differential)	4/2 kV

Application Conditions

Maximum dim level	Not applicable
-------------------	----------------

Light Technical

Order Code	Full Product Name	Light source color	Correlated Color	
			Temperature (Nom)	Luminous Flux
911401834698	BGP161 LED2300/WW PSU 220-240V 7043 GM	Warm white	3000 K	2,300 lm
911401834898	BGP161 LED2500/NW PSU 220-240V 7043 GM	Neutral white	4000 K	2,500 lm

Operating and Electrical

Order Code	Full Product Name	Power Consumption	Order Code	Full Product Name	Power Consumption
911401834698	BGP161 LED2300/WW PSU 220-240V 7043 GM	27 W	911401834898	BGP161 LED2500/NW PSU 220-240V 7043 GM	29 W

Smart Post-top G3

