



Affordable and reliable energy saving LED Lighting Luminaires

Smartbright Waterproof G2

SmartBright Waterproof G2 is an innovation from SmartBright Waterproof G1, can be used to replace traditional waterproof luminaires with fluorescent lamps or LED tubes, provides quality of light with substantial energy & maintenance savings. The luminaire and its components are designed for both indoor and semi-outdoor application (anti-UV PC material housing and diffuser), it is an ideal lighting solution for canopy, food industry, car parks, car washers. Beyond that, SmartBright Waterproof G2 is also maintenance free by seal for life integral design, and reliable 25K hrs lifetime.

Benefits

- Easy Wiring: 3 wiring options for select, fulfil with customer wiring habits.
- Excellent Performance: good uniformity SDCM<5, high quality light CRI>80, more brighter with higher lumen output.
- Reliable Quality: 25K hours with 70% lumen maintained, wide range working temperature from -30°C to +45°C, can be applied in various industrial environments

Features

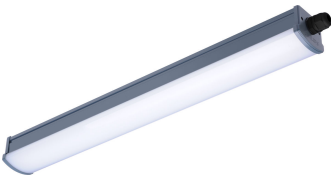
- Robust design: IP65 IK06, Anti UV Polycarbonate housing, dual extrusion technology.
- Easy Installation: Stainless Universal Mounting Clip, Stainless Screws, Stainless Hooks, all in 1 package with luminaire.

Smartbright Waterproof G2

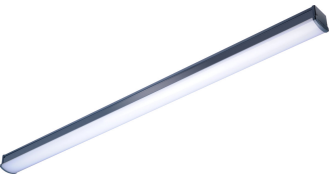
Application

- Industry general area
- Food and beverage
- workshop and assembly line
- Car park
- Canopy, walkways
- Semi outdoor

Versions



WT066C L600

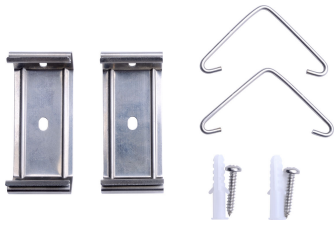


WT066C

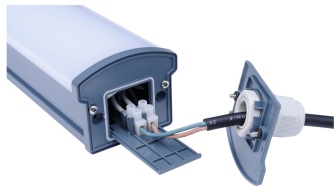
Product details



WT066C Breather Detail Photo



WT066C Mounting Bracket Detail Photo



WT066C Wiring Detail Photo

Smartbright Waterproof G2

Application Conditions

Ambient temperature range	-30 to +45 °C
Maximum dim level	Not applicable

Approval and Application

Mech. impact protection code	IK06
Ingress protection code	IP65

Controls and Dimming

Dimmable	No
----------	----

Operating and Electrical

Input Voltage	220 to 240 V
---------------	--------------

General Information

Beam angle of light source	- °
CE mark	CE mark
Protection class IEC	Safety class II
Optical cover/lens type	Polycarbonate bowl/cover opal
Driver included	Yes
ENEC mark	-
Flammability mark	-
Glow-wire test	Temperature 750 °C, duration 5 s
Light source replaceable	No
Number of gear units	1 unit
Optic type	Symmetrical

Initial Performance (IEC Compliant)

Initial chromaticity	SDCM<5
Init. Colour Rendering Index	>80
Initial LED luminaire efficacy	90 lm/W
Luminous flux tolerance	+/-10%

Mechanical and Housing

Colour	Grey and White
--------	----------------

Over Time Performance (IEC Compliant)

Median useful life L80B50	17500 h
Median useful life L90B50	8100 h

Initial Performance (IEC Compliant)

Order Code	Full Product Name	Init. Corr. Colour Temperature	Initial luminous flux	Initial input power
911401822897	WT066C NW LED18 L600 PSU TB	4000 K	1800 lm	19.4 W
911401823097	WT066C NW LED18 L1200 PSU TB	4000 K	1800 lm	19.4 W
911401823197	WT066C CW LED36 L1200 PSU TB	6500 K	3600 lm	40 W
911401823297	WT066C NW LED36 L1200 PSU TB	4000 K	3600 lm	40 W
911401824797	WT066C CW LED18 L600 PSU FW	6500 K	1800 lm	19.4 W
911401825197	WT066C CW LED36 L1200 PSU FW	6500 K	3600 lm	40 W
911401823497	WT066C NW LED45 L1500 PSU TB	4000 K	4500 lm	49 W

Smartbright Waterproof G2

