



For every project where light really matters, simply efficient street lighting

CoreLine Malaga LED

The Philips CoreLine Malaga LED family consists of two sizes for urban street lighting. Both use a Philips LED engine as a light source and a Philips Xitanium driver – a combination that results in energy savings of 50%. CoreLine Malaga LED has been designed to be as efficient as possible. It offers the same performance as the SON-T 50, 70, 100 and 150W luminaires it replaces, providing the right amount of light in the right place. Furthermore, as the LED light engine in CoreLine Malaga LED will last for the lifetime of the luminaire, it will return your investment simply by saving on the multiple lamp replacements required with SON-T. With its extended gland feature, the CoreLine Malaga LED luminaire is easy to install with no need to open the luminaire to connect the power cable. At the same time, the flat glass cover can be removed to allow access to the driver for maintenance, if required. Special versions of Malaga lighting are available with extra options. However, these specials are manufactured to order only, and have a longer delivery time. The options include: Wide beam (DW) optic, additional surge protection device (10kV), Marine Salt Protection (MSP) paint finish, Micro Mini Pro photocell 35 Lux, a built-in (glass) 6A fuse, and a 3-meter external flying lead cable (H07RN-F). Not all these options can always be combined with each other. For more advice, please consult your Philips partner.

CoreLine Malaga LED

Benefits

- Reliable quality: aluminum die-cast housing, tempered flat glass
- Easy return on investment: fewer lamp replacements (than SON-T) to save on costs, plus 50% energy savings to reduce annual running costs
- Durable operation (IP65, IK08)
- Easy maintenance, installation and spare part information with Signify Service tag (unique QR identification)

Features

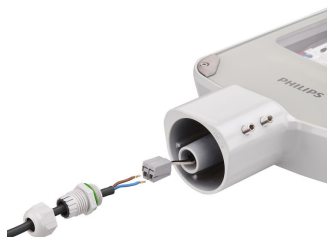
- Direct, 1:1 replacement for SON-T lamps in road lighting, street lighting and urban lighting applications.
- Robust design with Philips standardized LED light platform and fixed output Philips Xitanium outdoor driver.
- Easy installation with extended gland - no need to open luminaire.
- 100,00 hours lifetime L70 (or 75,000 hours L80) at Tq +25 °C).
- 5-year warranty

Application

- Parking lots
- Industrial areas
- Public transport such as bus or tramway stops

Dimensional drawing

Product details



CoreLine_Malaga_LED-
BRP101_102-1DPP.TIF



CoreLine_Malaga_LED-
BRP101_102-2DPP.TIF

CoreLine Malaga LED

Product details



CoreLine_Malaga_LED-
BRP101_102-3DPP.TIF



CoreLine_Malaga_LED-
BRP101_102-4DPP.TIF



CoreLine_Malaga_LED-
BRP101_102-5DPP.TIF



CoreLine_Malaga_LED-BRP101-
DPP.TIF



CoreLine_Malaga_LED-BRP102-
DPP.TIF

CoreLine Malaga LED

General Information	
CE mark	Yes
Driver included	Yes
Flammability mark	-
Light source replaceable	No
Number of gear units	1 unit
Light Technical	
Luminaire light beam spread	-
Light source color	740 neutral white
Correlated Color Temperature (Nom)	4000 K
Optical cover type	Flat glass
Color rendering index (CRI)	70
Standard tilt angle side entry	0°
Standard tilt angle posttop	-
Upward light output ratio	0
Controls and Dimming	
Dimmable	No
Mechanical and Housing	
Housing Color	Gray
Approval and Application	
Mech. impact protection code	IK08
Ingress protection code	IP65
Application Conditions	
Maximum dim level	Not applicable

General Information

Order Code	Full Product Name	Lamp family code	Product family code	Service tag
99815100	BRP101 LED37/740 I DM	LED37	BRP101	Yes
99816800	BRP101 LED37/740 II DM	LED37	BRP101	-
44819600	BRP101 LED37/740 II DW SDM10	LED37	BRP101	-
12566700	BRP101 LED37/740 II DM MSP	LED37	BRP101	-
99817500	BRP102 LED55/740 I DM	LED55	BRP102	-
99818200	BRP102 LED55/740 II DM	LED55	BRP102	-
99819900	BRP102 LED75/740 I DM	LED75	BRP102	-
99820500	BRP102 LED75/740 II DM	LED75	BRP102	-
99821200	BRP102 LED110/740 I DM	LED110	BRP102	-
99822900	BRP102 LED110/740 II DM	LED110	BRP102	-
44821900	BRP102 LED55/740 DW PZM-35	LED55	BRP102	-
44822600	BRP102 LED75/740 II DM SDM10	LED75	BRP102	-
18113700	BRP102 LED55/740 II DM MSP	LED55	BRP102	-
18114400	BRP102 LED75/740 II DM MSP	LED75	BRP102	-
18115100	BRP102 LED110/740 II DM MSP	LED110	BRP102	-

Light Technical

Order Code	Full Product Name	Luminous Flux	Optic type outdoor
99815100	BRP101 LED37/740 I DM	3,054 lm	Distribution medium
99816800	BRP101 LED37/740 II DM	3,054 lm	Distribution medium
44819600	BRP101 LED37/740 II DW SDM10	3,054 lm	Distribution wide
12566700	BRP101 LED37/740 II DM MSP	3,054 lm	Distribution medium
99817500	BRP102 LED55/740 I DM	4,600 lm	Distribution medium
99818200	BRP102 LED55/740 II DM	4,600 lm	Distribution medium
99819900	BRP102 LED75/740 I DM	6,133 lm	Distribution medium
99820500	BRP102 LED75/740 II DM	6,133 lm	Distribution medium

Order Code	Full Product Name	Luminous Flux	Optic type outdoor
99821200	BRP102 LED110/740 I DM	9,006 lm	Distribution medium
99822900	BRP102 LED110/740 II DM	9,006 lm	Distribution medium
44821900	BRP102 LED55/740 DW PZM-35	4,600 lm	Distribution wide
44822600	BRP102 LED75/740 II DM SDM10	6,133 lm	Distribution medium
18113700	BRP102 LED55/740 II DM MSP	4,600 lm	Distribution medium
18114400	BRP102 LED75/740 II DM MSP	6,133 lm	Distribution medium
18115100	BRP102 LED110/740 II DM MSP	9,006 lm	Distribution medium

Operating and Electrical

Order Code	Full Product Name	Power Consumption
99815100	BRP101 LED37/740 I DM	29.5 W
99816800	BRP101 LED37/740 II DM	29.5 W
44819600	BRP101 LED37/740 II DW SDM10	29.5 W
12566700	BRP101 LED37/740 II DM MSP	29.5 W
99817500	BRP102 LED55/740 I DM	39.0 W
99818200	BRP102 LED55/740 II DM	39 W
99819900	BRP102 LED75/740 I DM	56.5 W
99820500	BRP102 LED75/740 II DM	56.5 W

Order Code	Full Product Name	Power Consumption
99821200	BRP102 LED110/740 I DM	83.0 W
99822900	BRP102 LED110/740 II DM	83.0 W
44821900	BRP102 LED55/740 DW PZM-35	39.0 W
44822600	BRP102 LED75/740 II DM SDM10	56.5 W
18113700	BRP102 LED55/740 II DM MSP	39 W
18114400	BRP102 LED75/740 II DM MSP	56.5 W
18115100	BRP102 LED110/740 II DM MSP	83.0 W

Approval and Application

Order Code	Full Product Name	Surge Protection (Common/Differential)	Order Code	Full Product Name	Surge Protection (Common/Differential)
99815100	BRP101 LED37/740 I DM	Luminaire surge protection level until 4 kV differential mode and 4 kV common mode	99821200	BRP102 LED110/740 I DM	Luminaire surge protection level until 4 kV differential mode and 4 kV common mode
99816800	BRP101 LED37/740 II DM	Luminaire surge protection level until 4 kV differential mode and 4 kV common mode	99822900	BRP102 LED110/740 II DM	Luminaire surge protection level until 4 kV differential mode and 4 kV common mode
44819600	BRP101 LED37/740 II DW SDM10	Surge protection level until 10 kV differential mode	44821900	BRP102 LED55/740 DW PZM-35	Luminaire surge protection level until 4 kV differential mode and 4 kV common mode
12566700	BRP101 LED37/740 II DM MSP	Luminaire surge protection level until 4 kV differential mode and 4 kV common mode	44822600	BRP102 LED75/740 II DM SDM10	Surge protection level until 10 kV differential mode
99817500	BRP102 LED55/740 I DM	Luminaire surge protection level until 4 kV differential mode and 4 kV common mode	18113700	BRP102 LED55/740 II DM MSP	Luminaire surge protection level until 4 kV differential mode and 4 kV common mode
99818200	BRP102 LED55/740 II DM	Luminaire surge protection level until 4 kV differential mode and 4 kV common mode	18114400	BRP102 LED75/740 II DM MSP	Luminaire surge protection level until 4 kV differential mode and 4 kV common mode
99819900	BRP102 LED75/740 I DM	Luminaire surge protection level until 4 kV differential mode and 4 kV common mode	18115100	BRP102 LED110/740 II DM MSP	Luminaire surge protection level until 4 kV differential mode and 4 kV common mode
99820500	BRP102 LED75/740 II DM	Luminaire surge protection level until 4 kV differential mode and 4 kV common mode			

Over Time Performance (IEC Compliant)

Order Code	Full Product Name	Driver failure rate at 5000 h	Order Code	Full Product Name	Driver failure rate at 5000 h
99815100	BRP101 LED37/740 I DM	-	99821200	BRP102 LED110/740 I DM	-
99816800	BRP101 LED37/740 II DM	-	99822900	BRP102 LED110/740 II DM	-
44819600	BRP101 LED37/740 II DW SDM10	0.05 %	44821900	BRP102 LED55/740 DW PZM-35	0.05 %
12566700	BRP101 LED37/740 II DM MSP	-	44822600	BRP102 LED75/740 II DM SDM10	0.05 %
99817500	BRP102 LED55/740 I DM	-	18113700	BRP102 LED55/740 II DM MSP	-
99818200	BRP102 LED55/740 II DM	-	18114400	BRP102 LED75/740 II DM MSP	-
99819900	BRP102 LED75/740 I DM	-	18115100	BRP102 LED110/740 II DM MSP	-
99820500	BRP102 LED75/740 II DM	-			

