



# CoreLine Malaga LED: Simply Efficient

## CoreLine Malaga LED

The CoreLine Malaga LED family is designed for general road, street and residential application. The family consists of two sizes and uses a Philips standardised-design LED engine as light source and a Philips Xitanium fixed output outdoor driver.

Quality you can rely on. CoreLine Malaga LED has been designed to be as efficient as possible, performing the same task as the SON-T 50, 70, 100 and 150 W luminaires it replaces; providing the right amount of light in the right place. The medium-beam (DM) optic delivers an efficient distribution onto the road. The combination results in interesting energy savings which reduce operating costs significantly. 50% energy reduction is realistically possible. At the same time, the investment in a CoreLine Malaga LED luminaire is in many cases on the same level as an old SON-T luminaire, including the first lamp. As the LED light engine in CoreLine Malaga LED will last the lifetime of the luminaire, just by saving the multiple lamp replacements needed with SON-T, ROI is immediate. Ease of installation is assured through the extended gland feature; the luminaire does not need to be opened to connect the power cable. At the same time, the flat glass cover can be removed to allow access to the driver for maintenance, if required.

Adding up the functions and features truly make a choice for CoreLine Malaga LED an easy decision. As a member of the CoreLine family, the Malaga LED is easily and quickly available through your local Philips Partner. Simply efficient. Specials; In addition to the standard version of CoreLine Malaga LED as described above, versions with several options are available. As these are specials, and manufactured to order only, these specials do have a longer delivery time. Options available are; Wide-beam (DW) optic. Added surge-protection device 10 kV (SRG10). Marine Salt Protection (MSP) paint finish, e.g. for coastal areas. Micro Mini Pro photocell 35 Lux. Built-in (glass) fuse 6A. 3-metres external flying lead cable (H07RN-F). Not all options can be combined. Please consult your Philips Partner for specific details in case of interest or doubt.

# CoreLine Malaga LED

## Benefits

- Reliable quality: aluminium die-cast housing and tempered flat glass
- Maintainable, driver can be replaced
- IP65 and IK08 provide durable operation
- Ready to be paired with lighting control and software applications, by being equipped with the Philips SR (System Ready) socket
- Equipped with a service tag, a QR-based identification system that makes each luminaire uniquely identifiable and provides maintenance, installation and spare part information
- Easy return on investment. The investment in the luminaire, by saving lamp changes required for SON-T lamp luminaires, is already re-paid. On top, realistic energy savings of 50% reduce the yearly running costs of the installation

## Features

- A direct, one-for-one replacement for SON-T lamps in road, street and residential applications. A purpose-built, dedicated to LED, robust design including the Philips standardised LED light platform and a fixed output Philips Xitanium outdoor driver. Easy installation through the extended gland. No need to open the luminaire. 100 Khrs lifetime L70 (or 75,000 hours L80) at Tq +25 °C.
- 5-year warranty

## Application

- General outdoor; road, street and residential areas.
- Industrial areas.
- Car parks.
- Public transport, such as buses or bus stops.

## Specifications

Ambient Temperature	-40 to +35 °C	Driver	Power supply unit (PSU)
---------------------	---------------	--------	-------------------------

## Versions

Coreline Malaga LED - LED  
module 3700 lm

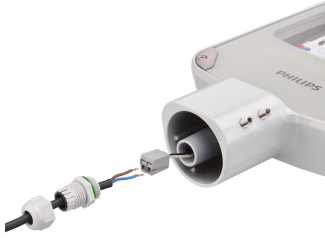


Coreline Malaga LED - LED  
module 5500 lm



# CoreLine Malaga LED

## Product details



CoreLine\_Malaga\_LED-  
BRP101\_102-1DPP.TIF



CoreLine\_Malaga\_LED-  
BRP101\_102-2DPP.TIF



CoreLine\_Malaga\_LED-  
BRP101\_102-3DPP.TIF



CoreLine\_Malaga\_LED-  
BRP101\_102-4DPP.TIF



CoreLine\_Malaga\_LED-  
BRP101\_102-5DPP.TIF



CoreLine\_Malaga\_LED-BRP101-  
DPP.TIF



CoreLine\_Malaga\_LED-BRP102-  
DPP.TIF

# CoreLine Malaga LED

## Accessories

Post top adaptor 60 mm

Ordercode 62134100



### Application Conditions

Maximum dim level Not applicable

### Approval and Application

Mech. impact protection code IK08

Surge Protection (Common/Differential) Luminaire surge protection level up to 4 kV differential mode and 4 kV common mode

### Controls and Dimming

Dimmable no

### General Information

Luminaire light beam spread -  
CE mark CE mark  
Light source colour 740 neutral white  
Optical cover/lens type FG  
Driver included Yes  
Flammability mark NO  
Light source replaceable No  
Number of gear units 1 unit  
Optic type Distribution medium

### Initial Performance (IEC Compliant)

Init. Corr. Colour Temperature 4000 K  
Init. Colour Rendering Index 70

### Light Technical

Standard tilt angle side entry 0°  
Standard tilt angle posttop -  
Upward light output ratio 0

### Mechanical and Housing

Colour Grey

### General Information

Order Code	Full Product Name	Lamp family code	Product Family Code
99815100	BRP101 LED37/740 I DM	LED37	BRP101
99817500	BRP102 LED55/740 I DM	LED55	BRP102
99819900	BRP102 LED75/740 I DM	LED75	BRP102
99821200	BRP102 LED110/740 I DM	LED110	BRP102

## Initial Performance (IEC Compliant)

## CoreLine Malaga LED

Order Code	Full Product Name	Initial luminous flux
99815100	BRP101 LED37/740 I DM	3054 lm
99817500	BRP102 LED55/740 I DM	4600 lm

Order Code	Full Product Name	Initial luminous flux
99819900	BRP102 LED75/740 I DM	6133 lm
99821200	BRP102 LED110/740 I DM	9006 lm

