



# The easy way to smart lighting

## MasterConnect LEDtube EM/Mains T8

Philips MasterConnect LEDtube EM/Mains T8 means easy upgrade to a connected lighting system. Its 2.4GHz mesh networking technology enables wireless integration with a variety of control devices, such as sensor and switch. The result? Even more energy saving and enhanced flexibility in your space. Through dimming, occupancy sensing and/or daylight harvesting, lamps deliver 50% or more energy saving thanks to MasterConnect technology.

### Benefits

- 50% energy saving vs. conventional lamps, plus 20-40% via advanced controls
- On/off, dimming and scene setting to promote productivity and user comfort
- Flexible lighting solution to meet dynamic needs in the space

### Features

- Retrofit to existing fluorescent lamps on EM ballast installations
- Superior lighting performance over 50,000hrs lifetime
- Easy to commission and (re-)configure
- Reliable and secure wireless communication within 2.4GHz mesh network

### Application

- Office, education and retail
- Parking, industry and warehouse

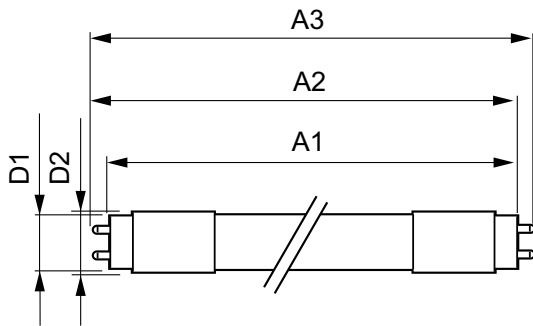
# MasterConnect LEDtube EM/Mains T8

## Versions



G13

## Dimensional drawing



Product	D1	D2	A1	A2	A3
MASTERConnect LEDtube IA	25.7	28 mm	1199.4	1205.3	1212.4
1200mm UO 16.5W865 T8	mm		mm	mm	mm
MASTERConnect LEDtube IA	25.7	28 mm	1199.4	1205.3	1212.4
1200mm UO 16.5W865 T8	mm		mm	mm	mm

