



The new generation of Mains T5 LEDtube lighting

MASTER LEDtube Mains T5

The new Philips Master LEDtube Mains T5 brings simplicity to your lighting project. You don't need to pay attention to the driver technology anymore. Thanks to a unique design, Philips MASTER LEDtube Mains T5 installs in luminaires operating on mains power connection. So simple to operate! . Perfectly safe, reliable & easy to install Philips MASTER LEDtube Mains T5 is the ideal alternative to standard fluorescent tubes to maximize value over lifetime with high energy saving and lower maintenance costs.

Benefits

- Reduced operational cost thanks to lower energy consumption
- Lower maintenance cost thanks to longer lifetime than conventional lamps
- Fastest and easiest way to upgrade existing luminaires to LED technology; completely safe product and installation process

Features

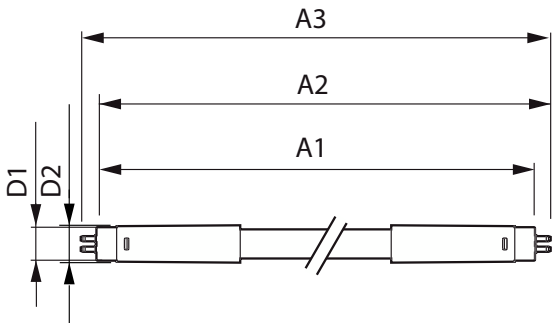
- Replacement of existing T5 lamps: operates with mains power connection
- Energy savings compared with fluorescent tubes
- Long lifetime
- No mercury

Application

- Offices, shops, classrooms
- Industrial facilities and warehouses

MASTER LEDtube Mains T5

Dimensional drawing



Product	D1	D2	A1	A2	A3
MAS LEDtube 1200mm HE 16.5W 830 T5	15.8 mm	19 mm	1,149 mm	1,156.1 mm	1,163.2 mm
MAS LEDtube 1200mm HE 16.5W 840 T5	15.8 mm	19 mm	1,149 mm	1,156.1 mm	1,163.2 mm
MAS LEDtube 1200mm HE 16.5W 865 T5	15.8 mm	19 mm	1,149 mm	1,156.1 mm	1,163.2 mm
MAS LEDtube 1200mm HO 26W 830 T5	15.5 mm	17.1 mm	1,149 mm	1,156 mm	1,163 mm
MAS LEDtube 1200mm HO 26W 840 T5	15.5 mm	17.1 mm	1,149 mm	1,156 mm	1,163 mm
MAS LEDtube 1200mm HO 26W 865 T5	15.5 mm	17.1 mm	1,149 mm	1,156 mm	1,163 mm
MAS LEDtube 1500mm HE 20W 830 T5	15.8 mm	19 mm	1,449 mm	1,454.9 mm	1,463.2 mm
MAS LEDtube 1500mm HE 20W 840 T5	15.8 mm	19 mm	1,449 mm	1,454.9 mm	1,463.2 mm
MAS LEDtube 1500mm HE 20W 865 T5	15.8 mm	19 mm	1,449 mm	1,454.9 mm	1,463.2 mm
MAS LEDtube 600mm HE 8W 830 T5	15.8 mm	19 mm	549 mm	556.1 mm	563.2 mm
MAS LEDtube 600mm HE 8W 840 T5	15.8 mm	19 mm	549 mm	556.1 mm	563.2 mm
MAS LEDtube 600mm HE 8W 865 T5	15.8 mm	19 mm	549 mm	556.1 mm	563.2 mm

General Information	
Cap-Base	G5
Switching Cycle	200,000
Nominal lifetime	50,000 hour(s)
Light Technical	
Beam Angle (Nom)	200 degree(s)
Color rendering index (CRI)	80
LLMF At End Of Nominal Lifetime (Nom)	70 %
Operating and Electrical	
Input Frequency	50 to 60 Hz
Line Frequency	50 to 60 Hz
Starting Time (Nom)	0.5 s
Controls and Dimming	
Dimmable	No
Mechanical and Housing	
Bulb Finish	Frosted
Bulb Shape	T5

Light Technical

Order Code	Full Product Name	Correlated Color Temperature (Nom)	Color Code	Luminous Flux
929001908502	MAS LEDtube 1200mm HO 26W 830 T5	3000 K	830	3,600 lm
929001908602	MAS LEDtube 1200mm HO 26W 840 T5	4000 K	840	3,900 lm
929001908702	MAS LEDtube 1200mm HO 26W 865 T5	6500 K	865	3,900 lm
929002420608	MAS LEDtube 600mm HE 8W 830 T5	3000 K	830	1,000 lm
929002420708	MAS LEDtube 600mm HE 8W 840 T5	4000 K	840	1,050 lm
929002420808	MAS LEDtube 600mm HE 8W 865 T5	6500 K	865	1,050 lm
929002420908	MAS LEDtube 1200mm HE 16.5W 830 T5	3000 K	830	2,300 lm
929002421008	MAS LEDtube 1200mm HE 16.5W 840 T5	4000 K	840	2,500 lm
929002421108	MAS LEDtube 1200mm HE 16.5W 865 T5	6500 K	865	2,500 lm
929002421208	MAS LEDtube 1500mm HE 20W 830 T5	3000 K	830	2,800 lm
929002421308	MAS LEDtube 1500mm HE 20W 840 T5	4000 K	840	3,000 lm
929002421408	MAS LEDtube 1500mm HE 20W 865 T5	6500 K	865	3,000 lm

Operating and Electrical

MASTER LEDtube Mains T5

Order Code	Full Product Name	Power Consumption
929001908502	MAS LEDtube 1200mm HO 26W 830 T5	26 W
929001908602	MAS LEDtube 1200mm HO 26W 840 T5	26 W
929001908702	MAS LEDtube 1200mm HO 26W 865 T5	26 W
929002420608	MAS LEDtube 600mm HE 8W 830 T5	8 W
929002420708	MAS LEDtube 600mm HE 8W 840 T5	8 W
929002420808	MAS LEDtube 600mm HE 8W 865 T5	8 W

Temperature

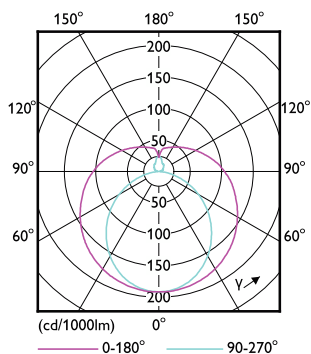
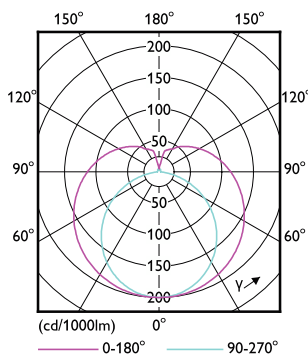
Order Code	Full Product Name	Ambient temperature range	T-Case Maximum (Nom)
929001908502	MAS LEDtube 1200mm HO 26W 830 T5	-20 to +45 °C	65 °C
929001908602	MAS LEDtube 1200mm HO 26W 840 T5	-20 to +45 °C	65 °C
929001908702	MAS LEDtube 1200mm HO 26W 865 T5	-20 to +45 °C	65 °C
929002420608	MAS LEDtube 600mm HE 8W 830 T5	-20 °C to 45 °C	60 °C
929002420708	MAS LEDtube 600mm HE 8W 840 T5	-20 °C to 45 °C	60 °C
929002420808	MAS LEDtube 600mm HE 8W 865 T5	-20 °C to 45 °C	60 °C

Order Code	Full Product Name	Power Consumption
929002420908	MAS LEDtube 1200mm HE 16.5W 830 T5	16.5 W
929002421008	MAS LEDtube 1200mm HE 16.5W 840 T5	16.5 W
929002421108	MAS LEDtube 1200mm HE 16.5W 865 T5	16.5 W
929002421208	MAS LEDtube 1500mm HE 20W 830 T5	20 W
929002421308	MAS LEDtube 1500mm HE 20W 840 T5	20 W
929002421408	MAS LEDtube 1500mm HE 20W 865 T5	20 W

Order Code	Full Product Name	Ambient temperature range	T-Case Maximum (Nom)
929002420908	MAS LEDtube 1200mm HE 16.5W 830 T5	-20 °C to 45 °C	70 °C
929002421008	MAS LEDtube 1200mm HE 16.5W 840 T5	-20 °C to 45 °C	70 °C
929002421108	MAS LEDtube 1200mm HE 16.5W 865 T5	-20 °C to 45 °C	70 °C
929002421208	MAS LEDtube 1500mm HE 20W 830 T5	-20 °C to 45 °C	75 °C
929002421308	MAS LEDtube 1500mm HE 20W 840 T5	-20 °C to 45 °C	75 °C
929002421408	MAS LEDtube 1500mm HE 20W 865 T5	-20 °C to 45 °C	75 °C

Approval and Application

Order Code	Full Product Name	Energy Consumption kWh/1000 h
929001908502	MAS LEDtube 1200mm HO 26W 830 T5	26 kWh
929001908602	MAS LEDtube 1200mm HO 26W 840 T5	26 kWh
929001908702	MAS LEDtube 1200mm HO 26W 865 T5	26 kWh
929002420608	MAS LEDtube 600mm HE 8W 830 T5	8 kWh
929002420708	MAS LEDtube 600mm HE 8W 840 T5	8 kWh
929002420808	MAS LEDtube 600mm HE 8W 865 T5	8 kWh
929002420908	MAS LEDtube 1200mm HE 16.5W 830 T5	17 kWh
929002421008	MAS LEDtube 1200mm HE 16.5W 840 T5	17 kWh
929002421108	MAS LEDtube 1200mm HE 16.5W 865 T5	17 kWh
929002421208	MAS LEDtube 1500mm HE 20W 830 T5	20 kWh
929002421308	MAS LEDtube 1500mm HE 20W 840 T5	20 kWh
929002421408	MAS LEDtube 1500mm HE 20W 865 T5	20 kWh



MASTER LEDtube Mains T5

