

# UNILinear Flex. a real IP68 cove lighting with vivid colour

## UNILinear Flex

UNILinear Flex is really and excellently waterproof and anti-dust LED strips with professional design to guarantee lighting performance. Thanks to filling with anti-UV polyurethane and processing by irrigation methods sealing glue, it not only ensure high quality of lighting color consistency but also protect products outdoor against from harsh environments outdoors. It's can be used for decoration lighting and guidance lighting outdoors, the higher CRI (80) delivers good performance of lighting in color rendering.

### Benefits

- Real IP68 water-proof and vivid light colour
- Lower maintenance costs and fewer concerns re water invasion

### Features

- IP68, sealed with anti-UV polyurethane without colour shifting and anti-UV ageing;
- Various lumen outputs from 400 lm to 1,200 lm per metre;
- Optional CCT 2,500 K/3,000 K/4,000 K/5,000 K/RGB for different applications;
- CRI80 for better vivid colour rendering;
- SDCM $\leq$  5, better colour consistency for visual comfort;
- DC 24VDC, Class III for safety use;
- Long lifespan 30 K hrs. L70B50@35 °C;
- Lead cable (1,000 mm) for connection;
- CB and CE certified;

# UNILinear Flex

## Application

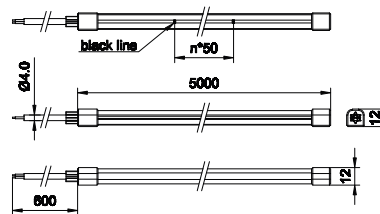
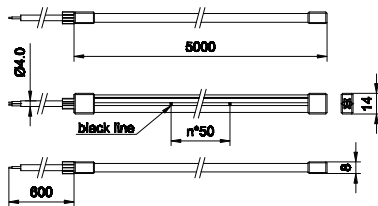
- Decorative lighting
- Guidance lighting
- Swimming pool
- Cove lighting

## Versions



UNILinear Flex Neon LED strips

## Dimensional drawing



## General Information

CE mark	No
Driver included	No

## Light Technical

Optical cover type	Opal
Color rendering index (CRI)	>90

## Controls and Dimming

Dimmable	No
----------	----

## Mechanical and Housing

Housing Color	White
---------------	-------

## Approval and Application

Mech. impact protection code	IK04
Ingress protection code	IP66

## Light Technical

Order Code	Full Product Name	Light source color	Correlated Color	
			Temperature (Nom)	Luminous Flux
911401767962	BGC401 1150LM 14W 3000K L5 1010 T	930 warm white	3000 K	5,750 lm
911401767972	BGC401 1150LM 14W 4000K L5 1010 T	940 neutral white	4000 K	6,000 lm
911401767922	BGC401 400LM 10W 3000K L5 0612 S	930 warm white	3000 K	2,000 lm
911401770982	BGC401 400LM 10W 4000K L5 0612 S	940 neutral white	4000 K	2,100 lm

## Operating and Electrical

Order Code	Full Product Name	Power Consumption
911401767962	BGC401 1150LM 14W 3000K L5 1010 T	56 W
911401767972	BGC401 1150LM 14W 4000K L5 1010 T	56 W

Order Code	Full Product Name	Power Consumption
911401767922	BGC401 400LM 10W 3000K L5 0612 S	43 W
911401770982	BGC401 400LM 10W 4000K L5 0612 S	43 W

