



# Philips Copenhagen City LED Gen2: comfortable, future-ready light for your city

## Copenhagen City LED gen2 small

The original Copenhagen luminaire was co-designed with Copenhagen's Office of City Architecture in the 1960s with the aim of enhancing the aesthetic appeal of the city through lighting. This timeless luminaire design comes in two types: Copenhagen City LED Gen2 is for city and residential areas where light comfort is important; Copenhagen LED Gen2 delivers high performance for road lighting applications. The second generation of Copenhagen City LED offers a very comfortable light distribution with minimum glare, enabled by a round LED engine, which follows the shape of the luminaire. The opal canopy option provides even more ways to enhance the impact of lighting. It is also perfect for city branding as it can be used to create both static and dynamic uplight with any color of light. The luminaire comes with a variety of suspensions and optics, offering maximum freedom in lighting design for downtown and residential areas. A variety of dedicated brackets are also available to enable you to create a consistent lighting design across multiple applications. It is also available with one or two Zhaga-D4i (ZD4i) System Ready (SR) sockets, which makes the luminaire future ready. This means Copenhagen City LED Gen2 is ready to pair with advanced control and lighting software applications such as Interact, or sensors such as the Philips Outdoor Sensor Bundle (OSB). And because the top SR socket is integrated into the canopy, it has no impact on the beautiful, clean design of the luminaire. Furthermore, every Copenhagen City LED Gen2 BRS761, BRS762 and BRS763 luminaire is uniquely identifiable, thanks to the Signify Service tag app. By simply scanning a QR code, placed inside the door of the mast or directly on the luminaire, you can instantly access the configuration of the

## Copenhagen City LED gen2 small

luminaire. This makes maintenance and programming operations faster and easier and enables you to create a digital library of lighting assets and spare parts.

### Benefits

- Unique aesthetic design with perfect LED integration and excellent finishing
- Very comfortable lighting with lifted LED engine, round shape, and optional satin diffuser
- City branding possibilities via static and dynamic uplight options in choice of colors
- Future-ready with Zhaga-D4i SR sockets to connect with Interact controls and sensors
- Easy installation and maintenance enabled by Service tag
- One coherent design concept for luminaires and brackets

### Features

- 3 sizes to fit all mounting heights (small, large, and mega) and possibilities: side entry, post-top, catenary, or central fixing
- Choice of color temperatures and color rendering for different ambiances: 2200K, 2700K, 3000K and 4000K
- Efficacy up to 157 lm/W
- Marine salt protection
- 5-year standard warranty (option to extend up to 10 years)

### Application

- Major city roads (mega and large versions)
- Downtown, city center streets (large)
- Residential streets, car parks, pedestrian places, and parks (small)

## Specifications

|   |   |
|---|---|
| <b>Type</b>                               | BRS761: Side entry  |
|   | BPS771: ø60 mm post top   |
|   | BDS761: Center, 3/4" thread suspended                             |
|   | BSS761: Suspended/ Wire   |
| <b>Material</b>                           | Housing: PE   |
|   | Front glass: tempered glass, silk screen printed                  |
| <b>Installation</b>                       | Side entry  |
|   | ø60 mm post top   |
|   | Center, 3/4" thread suspended                                     |
|   | Suspended/ Wire   |
| <b>Luminous flux</b>                      | 1800 lm to 11000 lm   |
| <b>Correlated color temperature - CCT</b> | 722, 727, 730, 740, 827, 830, 840                                 |
| <b>Luminaire efficacy</b>                 | up to 157 lm/W  |
| <b>Dimming</b>                            | PSU: Non-dimmable power supply unit,                              |
|   | PSR: Dimmable driver with LineSwitch,                             |
|   | PSD: Dimmable Power supply unit with DALI interface (integrated), |
|   | PSA: Dimmable driver with AmpDim integrated,                      |
|   | PSDD: Dimmable driver Dynadim integrated,                         |
|   | PSD-SR: Power supply unit with DALI and SystemReady interface,    |
|   | PSM: Power supply unit with Coded Mains integrated                |

|                             |                  |
|-----------------------------|------------------|
| <b>Accessories</b>          | Back light cover |
|                             | Satin diffuser   |
| <b>Ingress protection</b>   | IP66             |
| <b>Certification</b>        | CE               |
|                             | ENEC+            |
| <b>Serviceability class</b> | Class A          |

# Copenhagen City LED gen2 small

## Versions



Copenhagen City LED gen2 small  
BSS761

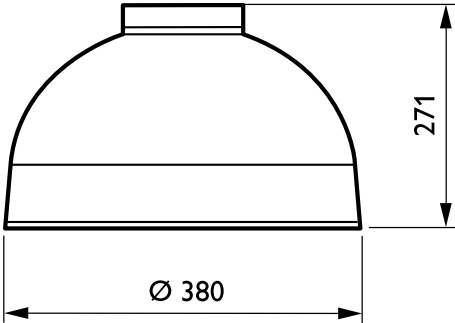
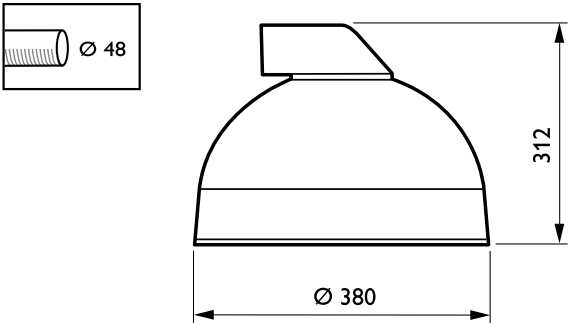
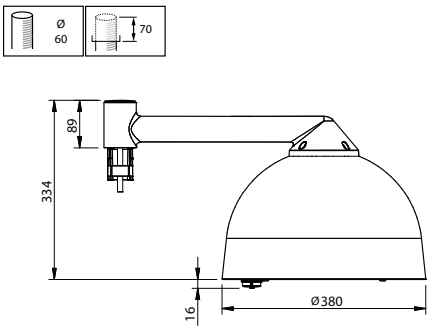
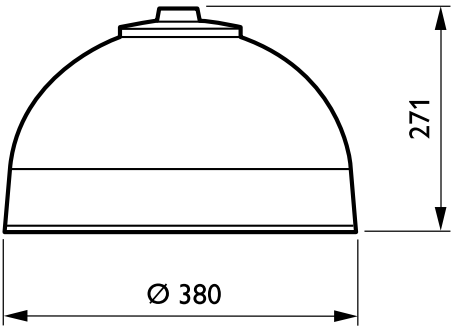


Copenhagen LED gen2 large  
centered



Small Copenhagen City LED gen2  
with side entry adaptor diam 48  
mm with top (hidden) and bottom  
socket

## Dimensional drawing



# Copenhagen City LED gen2 small

## Product details



Small Copenhagen LED gen2 and  
Copenhagen City LED gen2 Top  
System Ready socket location



Small Copenhagen City LED gen2  
glass serigraphy



Small Copenhagen LED gen2 and  
Copenhagen City LED gen2  
CityTouch node location



Small Copenhagen City LED gen2  
canopy and glass flush transition



Small Copenhagen City LED gen2  
glass serigraphy

# Copenhagen City LED gen2 small

## General Information

|                          |        |
|--------------------------|--------|
| CE mark                  | Yes    |
| Driver included          | Yes    |
| Flammability mark        | -      |
| Light source replaceable | Yes    |
| Number of gear units     | 1 unit |

## Light Technical

|                                    |                |
|------------------------------------|----------------|
| Luminaire light beam spread        | -              |
| Light source color                 | 830 warm white |
| Correlated Color Temperature (Nom) | 3000 K         |
| Optical cover type                 | Flat glass     |
| Standard tilt angle side entry     | 0°             |
| Standard tilt angle posttop        | 0°             |

## Controls and Dimming

|          |     |
|----------|-----|
| Dimmable | Yes |
|----------|-----|

## Approval and Application

|                              |      |
|------------------------------|------|
| Mech. impact protection code | IK08 |
| Ingress protection code      | IP66 |

## General Information

| Order Code   | Full Product Name                        | Lamp family code | Product family code |
|--------------|--|------------------|---------------------|
| 919008636277 | BSS761 LED50/830IIGL-MDMCLO-SRTBSTDEC10K | 50S              | BSS761              |
| 919008636276 | BDS761 LED50/830II GL-MDM SRTB STDE C10K | 50S              | BDS761              |
| 919008633848 | BRS761 LED30/830II GL-MDW CLOLS850 C10K  | LED30            | BRS761              |
| 919008633849 | BRS761 LED50/830 II GL-MDW CLOLS850 C10K | LED50            | BRS761              |
| 919008634898 | BRS761LED40/830II GL-MDW CLOLS850 C10K   | LED40            | BRS761              |
| 919008635353 | BRS761 LED40/830 II MDW GR CLOLS850 C10K | LED40            | BRS761              |
| 919008636732 | BPS771 LED40/830II MDM CLO-SRTB C10K 60P | LED40            | BPS771              |
| 919008636733 | BPS771 LED40/830 II MDM GW CLO C10K 60P  | LED40            | BPS771              |
| 919008633846 | BRS761 LED30/830 II GL-DK SRTB C10K      | LED30            | BRS761              |

## Light Technical

| Order Code   | Full Product Name                        | Color rendering | Luminous Flux | Optic type outdoor             | Upward light output ratio |
|--------------|--|-----------------|---------------|--------------------------------|---------------------------|
|              |  | index (CRI)     |               |                                |                           |
| 919008636277 | BSS761 LED50/830IIGL-MDMCLO-SRTBSTDEC10K | >80             | 4,116 lm      | Metronomis distribution medium | 0                         |
| 919008636276 | BDS761 LED50/830II GL-MDM SRTB STDE C10K | >80             | 4,200 lm      | Metronomis distribution medium | 0                         |
| 919008633848 | BRS761 LED30/830II GL-MDW CLOLS850 C10K  | ≥80             | 2,436 lm      | Metronomis distribution wide   | 0                         |
| 919008633849 | BRS761 LED50/830 II GL-MDW CLOLS850 C10K | ≥80             | 4,116 lm      | Metronomis distribution wide   | 0                         |
| 919008634898 | BRS761LED40/830II GL-MDW CLOLS850 C10K   | ≥80             | 3,154 lm      | Metronomis distribution wide   | 0                         |

| Order Code   | Full Product Name                        | Color rendering | Luminous Flux | Optic type outdoor             | Upward light output ratio |
|--------------|--|-----------------|---------------|--------------------------------|---------------------------|
|              |  | index (CRI)     |               |                                |                           |
| 919008635353 | BRS761 LED40/830 II MDW GR CLOLS850 C10K | ≥80             | 3,154 lm      | Metronomis distribution wide   | 0                         |
| 919008636732 | BPS771 LED40/830II MDM CLO-SRTB C10K 60P | 80              | 3,192 lm      | Metronomis distribution medium | 0                         |
| 919008636733 | BPS771 LED40/830 II MDM GW CLO C10K 60P  | 80              | 3,192 lm      | Metronomis distribution medium | 0.5                       |
| 919008633846 | BRS761 LED30/830 II GL-DK SRTB C10K      | ≥80             | 2,670 lm      | Distribution wet road (DK)     | 0                         |

## Operating and Electrical

| Order Code   | Full Product Name                        | Power Consumption |
|--------------|--|-------------------|
| 919008636277 | BSS761 LED50/830IIGL-MDMCLO-SRTBSTDEC10K | 37 W              |
| 919008636276 | BDS761 LED50/830II GL-MDM SRTB STDE C10K | 37.5 W            |
| 919008633848 | BRS761 LED30/830II GL-MDW CLOLS850 C10K  | 23.5 W            |
| 919008633849 | BRS761 LED50/830 II GL-MDW CLOLS850 C10K | 36.5 W            |

| Order Code   | Full Product Name                        | Power Consumption |
|--------------|--|-------------------|
| 919008634898 | BRS761LED40/830II GL-MDW CLOLS850 C10K   | 31.5 W            |
| 919008635353 | BRS761 LED40/830 II MDW GR CLOLS850 C10K | 31.5 W            |
| 919008636732 | BPS771 LED40/830II MDM CLO-SRTB C10K 60P | 31.5 W            |
| 919008636733 | BPS771 LED40/830 II MDM GW CLO C10K 60P  | 31.5 W            |

Copenhagen City LED gen2 small

| Order Code   | Full Product Name                   | Power Consumption |
|--------------|-------------------------------------|-------------------|
| 919008633846 | BRS761 LED30/830 II GL-DK SRTB C10K | 24 W              |

Mechanical and Housing

| Order Code   | Full Product Name                        | Housing Color |
|--------------|--|---------------|
| 919008636277 | BSS761 LED50/830IIGL-MDMCLO-SRTBSTDEC10K | White         |
| 919008636276 | BDS761 LED50/830II GL-MDM SRTB STDE C10K | White         |
| 919008633848 | BRS761 LED30/830II GL-MDW CLOLS850 C10K  | White         |
| 919008633849 | BRS761 LED50/830 II GL-MDW CLOLS850 C10K | White         |
| 919008634898 | BRS761LED40/830II GL-MDW CLOLS850 C10K   | White         |

| Order Code   | Full Product Name                        | Housing Color |
|--------------|--|---------------|
| 919008635353 | BRS761 LED40/830 II MDW GR CLOLS850 C10K | Gray          |
| 919008636732 | BPS771 LED40/830II MDM CLO-SRTB C10K 60P | Grey          |
| 919008636733 | BPS771 LED40/830 II MDM GW CLO C10K 60P  | Opal          |
| 919008633846 | BRS761 LED30/830 II GL-DK SRTB C10K      | White         |

Approval and Application

| Order Code   | Full Product Name                           | Surge Protection (Common/<br>Differential)  |
|--------------|---|---|
| 919008636277 | BSS761 LED50/830IIGL-MDMCLO-SRTBSTDEC10K    | Luminaire surge protection level until<br>6 kV differential mode and 10 kV<br>common mode |
| 919008636276 | BDS761 LED50/830II GL-MDM<br>SRTB STDE C10K | Luminaire surge protection level until<br>6 kV differential mode and 10 kV<br>common mode |
| 919008633848 | BRS761 LED30/830II GL-MDW<br>CLOLS850 C10K  | Luminaire surge protection level until<br>6 kV differential mode and 6 kV<br>common mode  |
| 919008633849 | BRS761 LED50/830 II GL-MDW<br>CLOLS850 C10K | Luminaire surge protection level until<br>6 kV differential mode and 6 kV<br>common mode  |
| 919008634898 | BRS761LED40/830II GL-MDW<br>CLOLS850 C10K   | Luminaire surge protection level until<br>6 kV differential mode and 6 kV<br>common mode  |

| Order Code   | Full Product Name                           | Surge Protection (Common/<br>Differential)  |
|--------------|---|---|
| 919008635353 | BRS761 LED40/830 II MDW GR<br>CLOLS850 C10K | Luminaire surge protection level until<br>6 kV differential mode and 6 kV<br>common mode  |
| 919008636732 | BPS771 LED40/830II MDM<br>CLO-SRTB C10K 60P | Luminaire surge protection level until<br>6 kV differential mode and 10 kV<br>common mode |
| 919008636733 | BPS771 LED40/830 II MDM GW<br>CLO C10K 60P  | Luminaire surge protection level until<br>6 kV differential mode and 10 kV<br>common mode |
| 919008633846 | BRS761 LED30/830 II GL-DK<br>SRTB C10K      | Luminaire surge protection level until<br>6 kV differential mode and 6 kV<br>common mode  |

Over Time Performance (IEC Compliant)

| Order Code   | Full Product Name                        | Driver failure rate<br>at 5000 h |
|--------------|--|----------------------------------|
| 919008636277 | BSS761 LED50/830IIGL-MDMCLO-SRTBSTDEC10K | -                                |
| 919008636276 | BDS761 LED50/830II GL-MDM SRTB STDE C10K | -                                |
| 919008633848 | BRS761 LED30/830II GL-MDW CLOLS850 C10K  | 0.01 %                           |
| 919008633849 | BRS761 LED50/830 II GL-MDW CLOLS850 C10K | 0.01 %                           |
| 919008634898 | BRS761LED40/830II GL-MDW CLOLS850 C10K   | -                                |

| Order Code   | Full Product Name                        | Driver failure rate<br>at 5000 h |
|--------------|--|----------------------------------|
| 919008635353 | BRS761 LED40/830 II MDW GR CLOLS850 C10K | -                                |
| 919008636732 | BPS771 LED40/830II MDM CLO-SRTB C10K 60P | -                                |
| 919008636733 | BPS771 LED40/830 II MDM GW CLO C10K 60P  | -                                |
| 919008633846 | BRS761 LED30/830 II GL-DK SRTB C10K      | 0.01 %                           |

Application Conditions

| Order Code   | Full Product Name                        | Maximum dim<br>level |
|--------------|--|----------------------|
| 919008636277 | BSS761 LED50/830IIGL-MDMCLO-SRTBSTDEC10K | 10%                  |
| 919008636276 | BDS761 LED50/830II GL-MDM SRTB STDE C10K | 10%                  |
| 919008633848 | BRS761 LED30/830II GL-MDW CLOLS850 C10K  | 50%                  |
| 919008633849 | BRS761 LED50/830 II GL-MDW CLOLS850 C10K | 50%                  |
| 919008634898 | BRS761LED40/830II GL-MDW CLOLS850 C10K   | -                    |

| Order Code   | Full Product Name                        | Maximum dim<br>level |
|--------------|--|----------------------|
| 919008635353 | BRS761 LED40/830 II MDW GR CLOLS850 C10K | -                    |
| 919008636732 | BPS771 LED40/830II MDM CLO-SRTB C10K 60P | 10%                  |
| 919008636733 | BPS771 LED40/830 II MDM GW CLO C10K 60P  | 10%                  |
| 919008633846 | BRS761 LED30/830 II GL-DK SRTB C10K      | 50%                  |

Copenhagen City LED gen2 small

Polar Wide Diagrams

Polar Normal (separate) - BRS761I -  
919008633846

Polar Normal (separate) - BRS761I -  
919008633849

Polar Normal (separate) - BRS761I -  
919008633848

Polar Normal (separate) - BRS761I -  
919008635353

