



# Philips Copenhagen LED Gen2: timeless design and future- ready technology

## Copenhagen LED gen2 large & mega

The original Copenhagen luminaire was co-designed with Copenhagen's Office of City Architecture in the 1960s with the aim of enhancing the aesthetic appeal of the city through lighting. This timeless luminaire design comes in two types: Copenhagen City LED Gen2 is for city and residential areas where light comfort is important; Copenhagen LED Gen2 delivers high performance for road lighting applications. The second generation of Copenhagen LED is available in a range of sizes, from mini to mega. This makes it suitable for any type of application while ensuring the dimensions of the luminaire and pole are well balanced, so every installation blends harmoniously into its surroundings. Various suspensions are available, allowing a variety of mounting options to provide maximum freedom during installation. Thanks to the built-in Philips LEDGINE-O engine, and the wide range of application-tailored optics, Copenhagen LED luminaires deliver the right amount of light and in the right direction on your street, enabling important energy savings. The luminaire is available with one or two Zhaga-D4i (ZD4i) System Ready (SR) sockets, which makes the luminaire future ready. This means Copenhagen LED Gen2 is ready to pair with advanced control and lighting software applications such as Interact, or sensors such as the Philips Outdoor Sensor Bundle (OSB). And because the top SR socket is integrated into the canopy, it has no impact on the beautiful, clean design of the luminaire. Furthermore, every Copenhagen LED Gen2 BPS559, BRS561, BRS562 and BRS563 luminaire is uniquely identifiable, thanks to the Signify Service tag app. By simply scanning a QR code, placed inside the door of the mast or directly on the luminaire, you can instantly access the configuration of the luminaire. This makes maintenance and programming operations faster and easier and enables you to create a digital library of lighting assets and spare parts.

# Copenhagen LED gen2 large & mega

## Benefits

- Excellent energy savings and light distribution thanks to LEDGINE-O high system efficacy and a large choice of optics
- Future-ready with Zhaga-D4i SR sockets to connect with Interact controls and sensors
- Service tag for easy installation and maintenance

## Features

- 4 sizes (mini, small, large, and mega) to fit all mounting heights and possibilities: side entry, wall-arm, post-top, catenary, or central fixing
- 50+ choice of beams, and internal louvers to match all configurations
- Choice of color temperatures and color rendering for different ambiances: 2200K, 2700K, 3000K and 4000K
- Efficacy up to 167 lm/W
- Marine salt protection
- 5-year standard warranty (option to extend up to 10 years)

## Application

- Traffic roads: motorways, highways (mega and large versions)
- Large streets and industrial areas (large)
- Small streets and car parks (small)
- Cycle paths, footpaths, pedestrian crossings (mini)

## Versions



Copenhagen LED gen2 mega  
BRS563



Copenhagen LED gen2 large  
suspended with bottom socket



Copenhagen LED gen2 large side  
entry diam 48mm with bottom  
socket

# Copenhagen LED gen2 large & mega

## Versions



Copenhagen LED gen2 large centered



Copenhagen LED gen2 mega centered



Copenhagen LED gen2 mega suspended



Copenhagen LED gen2 large side entry diam 48mm with gray canopy

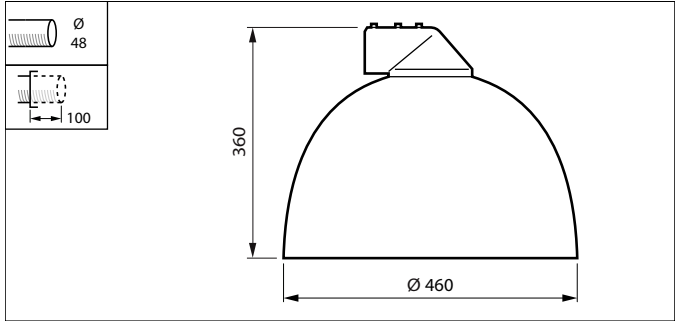
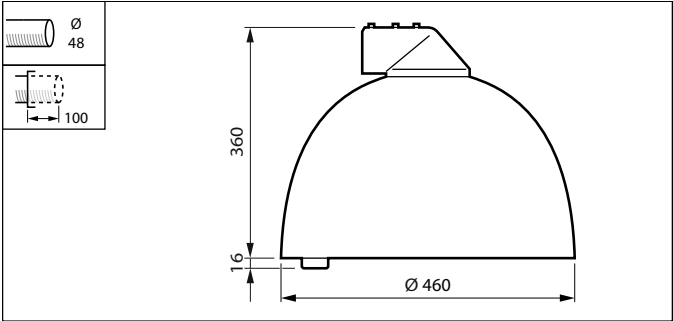


Copenhagen LED gen2 large side entry diam 48mm



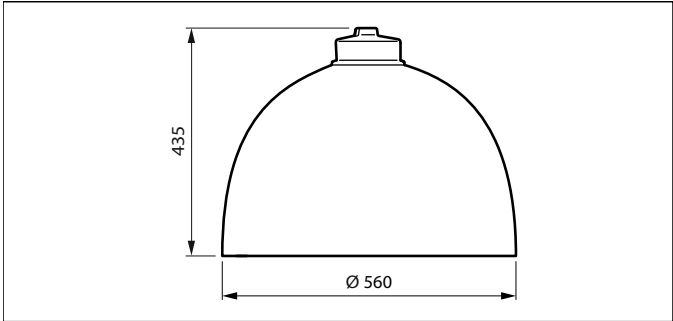
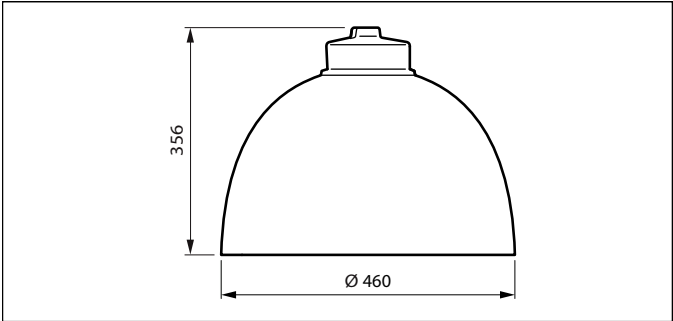
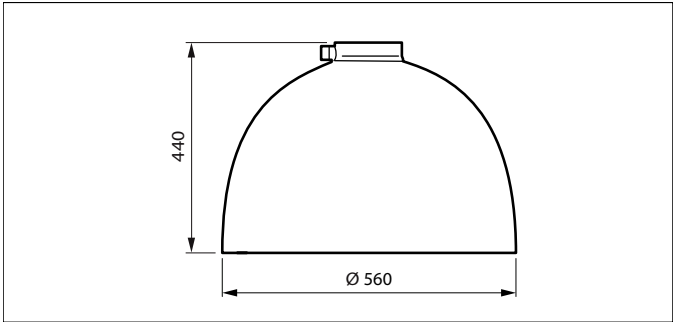
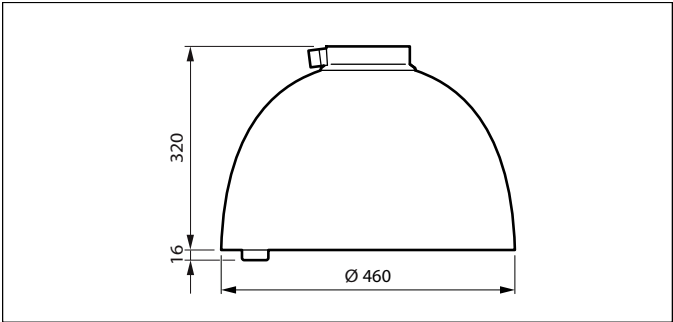
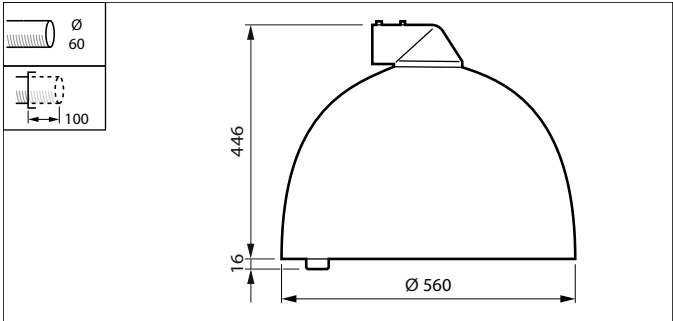
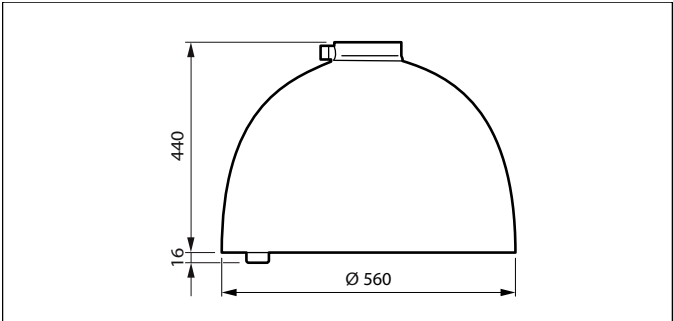
Copenhagen LED gen2 mega suspended with bottom socket

## Dimensional drawing



Copenhagen LED gen2 large & mega

Dimensional drawing



Copenhagen LED gen2 large & mega

General Information	
CE mark	Yes
Driver included	Yes
Flammability mark	-
Light source replaceable	Yes
Number of gear units	1 unit
Light Technical	
Luminaire light beam spread	-
Optical cover type	Flat glass
Standard tilt angle side entry	0°
Standard tilt angle posttop	0°
Upward light output ratio	0
Controls and Dimming	
Dimmable	Yes
Approval and Application	
Ingress protection code	IP66

General Information

Order Code	Full Product Name	Lamp family code	Product family code
919008636280	BRS563LED120/740IIDM31CLOSRTBSTDEC13K60S	120S	BRS563
919008634399	BSS562LED170/830IIGL-DM50CLO-LS850SRTB	LED170	BSS562
919008634395	BRS562 LED56/830IIGLDM50CLO-LS850 SRTB	LED56	BRS562
919008634398	BDS562 LED170/830IIGL-DM50 CLO-LS850C10K	LED170	BDS562
919008634404	BDS563 LED100/830II GL-DM50CLOLS850 C10K	LED100	BDS563
919008634406	BSS563 LED300/830IIGL-DM50 CLO-LS850C10K	LED300	BSS563
919008634397	BRS562 LED80/830II DM50 GR CLOLS850 C10K	LED80	BRS562
919008634939	BRS562 LED58/740 II DM11 GR CLO C10K FQQ	LED58	BRS562
919008634396	BRS562 LED56/830IIGLDM50 CLO-LS850 C10K	LED56	BRS562
919008634405	BSS563LED230/830II GL-DM50 CLOLS850 SRTB	LED230	BSS563

Light Technical (1/2)

		Correlated Light source color	Correlated Color Temperature (Nom)	( i Order Code			Correlated Light source color	Correlated Color Temperature (Nom)	Color rendering index (CRI)
Order Code	Full Product Name	color	(Nom)	(	Order Code	Full Product Name	color	(Nom)	(CRI)
919008636280	BRS563LED120/740IIDM31CLOSRTBSTDEC13K60S	740 neutral white	4000 K	>70	919008634406	BSS563 LED300/830IIGL-DM50 CLO-LS850C10K	830 warm white	3000 K	≥80
919008634399	BSS562LED170/830IIGL-DM50CLO-LS850SRTB	830 warm white	3000 K	≥80	919008634397	BRS562 LED80/830II DM50 GR CLOLS850 C10K	830 warm white	3000 K	≥80
919008634395	BRS562 LED56/830IIGLDM50CLO-LS850 SRTB	830 warm white	3000 K	≥80	919008634939	BRS562 LED58/740 II DM11 GR CLO C10K FQQ	740 neutral white	4000 K	≥70
919008634398	BDS562 LED170/830IIGL-DM50 CLO-LS850C10K	830 warm white	3000 K	≥80	919008634396	BRS562 LED56/830IIGLDM50 CLO-LS850 C10K	830 warm white	3000 K	≥80
919008634404	BDS563 LED100/830II GL-DM50CLOLS850 C10K	830 warm white	3000 K	≥80	919008634405	BSS563LED230/830II GL-DM50 CLOLS850 SRTB	830 warm white	3000 K	≥80

Light Technical (2/2)

		Optic type outdoor			Optic type outdoor
Order Code	Full Product Name	outdoor	Order Code	Full Product Name	outdoor
919008636280	BRS563LED120/740IIDM31CLOSRTBSTDEC13K60S	Distribution medium 31	919008634398	BDS562 LED170/830IIGL-DM50 CLO-LS850C10K	Distribution medium 50
919008634399	BSS562LED170/830IIGL-DM50CLO-LS850SRTB	Distribution medium 50	919008634404	BDS563 LED100/830II GL-DM50CLOLS850 C10K	Distribution medium 50
919008634395	BRS562 LED56/830IIGLDM50CLO-LS850 SRTB	Distribution medium 50	919008634406	BSS563 LED300/830IIGL-DM50 CLO-LS850C10K	Distribution medium 50

Copenhagen LED gen2 large & mega

Order Code	Full Product Name	Optic type outdoor
919008634397	BRS562 LED80/830II DM50 GR CLOLS850 C10K	Distribution medium 50
919008634939	BRS562 LED58/740 II DM11 GR CLO C10K FQQ	Distribution medium 11

Order Code	Full Product Name	Optic type outdoor
919008634396	BRS562 LED56/830IIGLDM50 CLO-LS850 C10K	Distribution medium 50
919008634405	BSS563LED230/830II GL-DM50 CLOLS850 SRTB	Distribution medium 50

Operating and Electrical

Order Code	Full Product Name	Power Consumption
919008636280	BRS563LED120/740IIDM31CLOSRTBSTDEC13K60S	68 W
919008634399	BSS562LED170/830IIGL-DM50CLO-LS850SRTB	120 W
919008634395	BRS562 LED56/830IIGLDM50CLO-LS850 SRTB	41 W
919008634398	BDS562 LED170/830IIGL-DM50 CLO-LS850C10K	120 W
919008634404	BDS563 LED100/830II GL-DM50CLOLS850 C10K	71 W

Order Code	Full Product Name	Power Consumption
919008634406	BSS563 LED300/830IIGL-DM50 CLO-LS850C10K	210 W
919008634397	BRS562 LED80/830II DM50 GR CLOLS850 C10K	57 W
919008634939	BRS562 LED58/740 II DM11 GR CLO C10K FQQ	33.5 W
919008634396	BRS562 LED56/830IIGLDM50 CLO-LS850 C10K	40.5 W
919008634405	BSS563LED230/830II GL-DM50 CLOLS850 SRTB	164 W

Mechanical and Housing

Order Code	Full Product Name	Housing Color
919008636280	BRS563LED120/740IIDM31CLOSRTBSTDEC13K60S	Gray
919008634399	BSS562LED170/830IIGL-DM50CLO-LS850SRTB	White
919008634395	BRS562 LED56/830IIGLDM50CLO-LS850 SRTB	White
919008634398	BDS562 LED170/830IIGL-DM50 CLO-LS850C10K	White
919008634404	BDS563 LED100/830II GL-DM50CLOLS850 C10K	White

Order Code	Full Product Name	Housing Color
919008634406	BSS563 LED300/830IIGL-DM50 CLO-LS850C10K	White
919008634397	BRS562 LED80/830II DM50 GR CLOLS850 C10K	Gray
919008634939	BRS562 LED58/740 II DM11 GR CLO C10K FQQ	Gray
919008634396	BRS562 LED56/830IIGLDM50 CLO-LS850 C10K	White
919008634405	BSS563LED230/830II GL-DM50 CLOLS850 SRTB	White

Approval and Application

		Mech. impact protection code	Surge Protection (Common/Differential mode and 10 kV common mode)			Mech. impact protection code	Surge Protection (Common/Differential mode and 10 kV common mode)
Order Code	Full Product Name			Order Code	Full Product Name		
919008636280	BRS563LED120/740IIDM31CLOSRTBSTDEC13K60S	IK08	Luminaire surge protection level until 6 kV differential mode and 10 kV common mode	919008634395	BRS562 LED56/830IIGLDM50CLO-LS850 SRTB	IK07	Luminaire surge protection level until 6 kV differential mode and 10 kV common mode
919008634399	BSS562LED170/830IIGL-DM50CLO-LS850SRTB	IK07	Luminaire surge protection level until 6 kV differential mode and 6 kV common mode	919008634398	BDS562 LED170/830IIGL-DM50 CLO-LS850C10K	IK07	Luminaire surge protection level until 6 kV differential mode and 6 kV common mode
				919008634404	BDS563 LED100/830II GL-DM50CLOLS850 C10K	IK08	Luminaire surge protection level until 6 kV differential mode and 10 kV common mode

Copenhagen LED gen2 large & mega

		Mech. impact protection	Surge Protection (Common/ Differential			Mech. impact protection	Surge Protection (Common/ Differential)
Order Code	Full Product Name	code	mode	Order Code	Full Product Name	code	mode
			protection level until 6 kV differential mode and 6 kV common mode				protection level until 6 kV differential mode and 6 kV common mode
919008634406	BSS563 LED300/830IIGL-DM50 CLO-LS850C10K	IK08	Luminaire surge protection level until 6 kV differential mode and 6 kV common mode	919008634396	BRS562 LED56/830IIGLDM50 CLO-LS850 C10K	IK07	Luminaire surge protection level until 6 kV differential mode and 6 kV common mode
919008634397	BRS562 LED80/830II DM50 GR CLOLS850 C10K	IK07	Luminaire surge protection level until 6 kV differential mode and 6 kV common mode	919008634405	BSS563LED230/830II GL-DM50 CLOLS850 SRTB	IK08	Luminaire surge protection level until 6 kV differential mode and 6 kV common mode
919008634939	BRS562 LED58/740 II DM11 GR CLO C10K FQQ	IK07	Luminaire surge				

Over Time Performance (IEC Compliant)

Order Code	Full Product Name	Driver failure rate at 5000 h	Order Code	Full Product Name	Driver failure rate at 5000 h
919008636280	BRS563LED120/740IIDM31CLOSRTBSTDEC13K60S	-	919008634406	BSS563 LED300/830IIGL-DM50 CLO-LS850C10K	0.01 %
919008634399	BSS562LED170/830IIGL-DM50CLO-LS850SRTB	0.01 %	919008634397	BRS562 LED80/830II DM50 GR CLOLS850 C10K	0.01 %
919008634395	BRS562 LED56/830IIGLDM50CLO-LS850 SRTB	0.01 %	919008634939	BRS562 LED58/740 II DM11 GR CLO C10K FQQ	-
919008634398	BDS562 LED170/830IIGL-DM50 CLO-LS850C10K	0.01 %	919008634396	BRS562 LED56/830IIGLDM50 CLO-LS850 C10K	0.01 %
919008634404	BDS563 LED100/830II GL-DM50CLOLS850 C10K	0.01 %	919008634405	BSS563LED230/830II GL-DM50 CLOLS850 SRTB	0.01 %

Application Conditions

Order Code	Full Product Name	Maximum dim level	Order Code	Full Product Name	Maximum dim level
919008636280	BRS563LED120/740IIDM31CLOSRTBSTDEC13K60S	10%	919008634406	BSS563 LED300/830IIGL-DM50 CLO-LS850C10K	-
919008634399	BSS562LED170/830IIGL-DM50CLO-LS850SRTB	50%	919008634397	BRS562 LED80/830II DM50 GR CLOLS850 C10K	-
919008634395	BRS562 LED56/830IIGLDM50CLO-LS850 SRTB	-	919008634939	BRS562 LED58/740 II DM11 GR CLO C10K FQQ	-
919008634398	BDS562 LED170/830IIGL-DM50 CLO-LS850C10K	50%	919008634396	BRS562 LED56/830IIGLDM50 CLO-LS850 C10K	-
919008634404	BDS563 LED100/830II GL-DM50CLOLS850 C10K	-	919008634405	BSS563LED230/830II GL-DM50 CLOLS850 SRTB	-

Polar Wide Diagrams

Polar Normal (separate) - BRS562I -  
919008634396

Polar Normal (separate) - BRS562I -  
919008634397

Polar Normal (separate) - BRS562I -  
919008634399

Polar Normal (separate) - BRS562I -  
919008634398

Polar Normal (separate) - BRS563I -  
919008634404

Polar Normal (separate) - BRS563I -  
919008634406

Polar Normal (separate) - BRS563I -  
919008634405



## Copenhagen LED gen2 large & mega

