



# High Performance LED replacements for conventional T5 lamps

## T5

Philips T5 LED tubes offer an affordable, energy saving retrofit solution. The T5 lamps have been engineered to withstand the test of time with a 50,000-hour lifetime and a limited 5-year warranty to back it up. The lighting performance effectively replaces conventional fluorescent T5 HO or T5 HE lamps. Available in either InstantFit (Type A or Type C) or MainsFit (Type B / Ballast bypass), Philips T5 TLEDs provide a variety of options for any application.

### Benefits

- Instantly reduces lighting costs
- True T5 size fits conventional applications
- One lamp for both HE and HO applications (2ft/3ft lamps)

### Features

- Available in InstantFit plug-and-play (UL Type A) or MainsFit (Type B) Options
- MainsFit T5 (Type B/Ballast Bypass) are double-ended for quick installation
- Easy installation. Retrofit replacement of existing T5 lamps
- 2ft and 3ft InstantFit lamps operate on both HE and HO ballasts

### Application

- Industrial & warehouses
- Retail & hospitality
- Parking lots and covered car parks

# T5

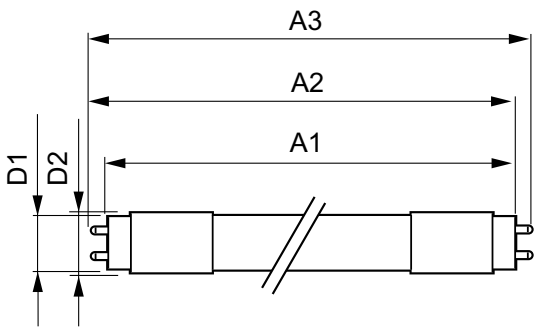
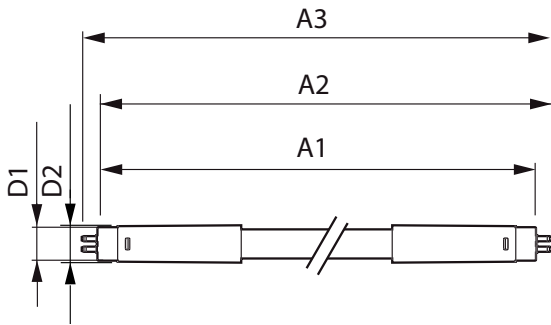
## Versions



G5

G5

Dimensional drawing



Product	D1	D2	A1	A2	A3
25T5HO/COR/46-850/ MF35/G 25/1	15.3 mm	18.6 mm	1147.8 mm	1154.9 mm	1162 mm
25T5HO/COR/46-835/ MF33/G 25/1	15.3 mm	18.6 mm	1147.8 mm	1154.9 mm	1162 mm
25T5HO/COR/46-840/ MF35/G 25/1	15.3 mm	18.6 mm	1147.8 mm	1154.9 mm	1162 mm

Product	D1	D2	A1	A2	A3
14T5HE/46-830/ IF20/G/DIM 10/1	15.3 mm	18.4 mm	1147.8 mm	1154.9 mm	1162 mm
24T5HO/46-840/ IF35/P/DIM 10/1	15.2 mm	17.8 mm	1147.8 mm	1154.9 mm	1162 mm
24T5HO/46-850/ IF35/P/DIM 10/1	15.2 mm	17.8 mm	1147.8 mm	1154.9 mm	1162 mm
24T5HO/46-835/ IF33/P/DIM 10/1	15.2 mm	17.8 mm	1147.8 mm	1154.9 mm	1162 mm
14T5HE/46-840/IF21/G/DIM 10/1	15.3 mm	18.4 mm	1147.8 mm	1154.9 mm	1162 mm
14T5HE/46-835/ IF20/G/DIM 10/1	15.3 mm	18.4 mm	1147.8 mm	1154.9 mm	1162 mm
8T5HE/22-840/IF10/G/DIM 10/1	15.3 mm	18.4 mm	547.8 mm	554.9 mm	562 mm
8T5HE/22-850/IF10/G/DIM 10/1	15.3 mm	18.4 mm	547.8 mm	554.9 mm	562 mm
11T5HE/34-840/IF15/G/DIM 10/1	15.3 mm	18.4 mm	847.8 mm	854.9 mm	862 mm
11T5HE/34-830/IF14/G/DIM 10/1	15.3 mm	18.4 mm	847.8 mm	854.9 mm	862 mm
11T5HE/34-835/IF14/G/DIM 10/1	15.3 mm	18.4 mm	847.8 mm	854.9 mm	862 mm
8T5HE/22-830/IF10/G/DIM 10/1	15.3 mm	18.4 mm	547.8 mm	554.9 mm	562 mm
8T5HE/22-835/IF10/G/DIM 10/1	15.3 mm	18.4 mm	547.8 mm	554.9 mm	562 mm
14T5HE/46-850/IF21/G/DIM 10/1	15.3 mm	18.4 mm	1147.8 mm	1154.9 mm	1162 mm
11T5HE/34-850/IF15/G/DIM 10/1	15.3 mm	18.4 mm	847.8 mm	854.9 mm	862 mm

## Approval and Application

Energy Consumption kWh/1000 h	- kWh
Energy Efficiency Label (EEL)	Not applicable

## General Information

Cap-Base	G5
Nominal Lifetime (Nom)	50000 h
Switching Cycle	50000X

## Light Technical

Llmf At End Of Nominal Lifetime (Nom)	70 %
---------------------------------------	------

## Mechanical and Housing

Bulb Shape	Tube, double-ended
------------	--------------------

## Temperature

T-Ambient (Max)	45 °C
T-Ambient (Min)	-20 °C
T-Storage (Max)	65 °C
T-Storage (Min)	-40 °C

## Controls and Dimming

Order Code	Full Product Name	Dimmable
467134	24T5HO/46-835/IF33/P/DIM 10/1	Yes
467142	24T5HO/46-840/IF35/P/DIM 10/1	Yes
467159	24T5HO/46-850/IF35/P/DIM 10/1	Yes
476416	8T5HE/22-830/IF10/G/DIM 10/1	Yes
476424	8T5HE/22-835/IF10/G/DIM 10/1	Yes
476432	8T5HE/22-840/IF10/G/DIM 10/1	Yes
476440	8T5HE/22-850/IF10/G/DIM 10/1	Yes
476457	11T5HE/34-830/IF14/G/DIM 10/1	Yes
476465	11T5HE/34-835/IF14/G/DIM 10/1	Yes
476473	11T5HE/34-840/IF15/G/DIM 10/1	Yes
476481	11T5HE/34-850/IF15/G/DIM 10/1	Yes
476499	14T5HE/46-830/IF20/G/DIM 10/1	Yes
476507	14T5HE/46-835/IF20/G/DIM 10/1	Yes
476515	14T5HE/46-840/IF21/G/DIM 10/1	Yes
476523	14T5HE/46-850/IF21/G/DIM 10/1	Yes
542050	25T5HO/COR/46-835/MF33/G 25/1	No
542068	25T5HO/COR/46-840/MF35/G 25/1	No
542076	25T5HO/COR/46-850/MF35/G 25/1	No

## Operating and Electrical

Order Code	Full Product Name	Input Frequency	Voltage (Nom)	Power (Rated) (Nom)	Starting Time (Nom)
467134	24T5HO/46-835/IF33/P/DIM 10/1	40000-80000 Hz	39-64 V	24 W	0.5 s
467142	24T5HO/46-840/IF35/P/DIM 10/1	40000-80000 Hz	39-64 V	24 W	0.5 s
467159	24T5HO/46-850/IF35/P/DIM 10/1	40000-80000 Hz	39-64 V	24 W	0.5 s
476416	8T5HE/22-830/IF10/G/DIM 10/1	40000-110000 Hz	40-60 V	8 W	0.5 s
476424	8T5HE/22-835/IF10/G/DIM 10/1	40000-110000 Hz	40-60 V	8 W	0.5 s
476432	8T5HE/22-840/IF10/G/DIM 10/1	40000-110000 Hz	40-60 V	8 W	0.5 s
476440	8T5HE/22-850/IF10/G/DIM 10/1	40000-110000 Hz	40-60 V	8 W	0.5 s
476457	11T5HE/34-830/IF14/G/DIM 10/1	40000-110000 Hz	50-80 V	11 W	0.5 s
476465	11T5HE/34-835/IF14/G/DIM 10/1	40000-110000 Hz	50-80 V	11 W	0.5 s
476473	11T5HE/34-840/IF15/G/DIM 10/1	40000-110000 Hz	50-80 V	11 W	0.5 s

Order Code	Full Product Name	Input Frequency	Voltage (Nom)	Power (Rated) (Nom)	Starting Time (Nom)
476481	11T5HE/34-850/IF15/G/DIM 10/1	40000-110000 Hz	50-80 V	11 W	0.5 s
476499	14T5HE/46-830/IF20/G/DIM 10/1	40000-110000 Hz	70-105 V	14 W	0.5 s
476507	14T5HE/46-835/IF20/G/DIM 10/1	40000-110000 Hz	70-105 V	14 W	0.5 s
476515	14T5HE/46-840/IF21/G/DIM 10/1	40000-110000 Hz	70-105 V	14 W	0.5 s
476523	14T5HE/46-850/IF21/G/DIM 10/1	40000-110000 Hz	70-105 V	14 W	0.5 s
542050	25T5HO/COR/46-835/MF33/G 25/1	50 to 60 Hz	120-277 V	25 W	0.45 s
542068	25T5HO/COR/46-840/MF35/G 25/1	50 to 60 Hz	120-277 V	25 W	0.45 s
542076	25T5HO/COR/46-850/MF35/G 25/1	50 to 60 Hz	120-277 V	25 W	0.45 s

## Light Technical (1/2)

Order Code	Full Product Name	Beam		Correlated Color	Color
		Angle (Nom)	Color Code	Temperature (Nom)	Rendering Index (Nom)
467134	24T5HO/46-835/IF33/P/DIM 10/1	140 °	835	3500 K	82
467142	24T5HO/46-840/IF35/P/DIM 10/1	140 °	841	4000 K	82
467159	24T5HO/46-850/IF35/P/DIM 10/1	140 °	850	5000 K	82
476416	8T5HE/22-830/IF10/G/DIM 10/1	200 °	830	3000 K	82
476424	8T5HE/22-835/IF10/G/DIM 10/1	200 °	835	3500 K	82
476432	8T5HE/22-840/IF10/G/DIM 10/1	200 °	841	4000 K	82
476440	8T5HE/22-850/IF10/G/DIM 10/1	200 °	850	5000 K	82
476457	11T5HE/34-830/IF14/G/DIM 10/1	200 °	830	3000 K	82
476465	11T5HE/34-835/IF14/G/DIM 10/1	200 °	835	3500 K	82

Order Code	Full Product Name	Beam		Correlated Color	Color
		Angle (Nom)	Color Code	Temperature (Nom)	Rendering Index (Nom)
476473	11T5HE/34-840/IF15/G/DIM 10/1	200 °	841	4000 K	82
476481	11T5HE/34-850/IF15/G/DIM 10/1	200 °	850	5000 K	82
476499	14T5HE/46-830/IF20/G/DIM 10/1	200 °	830	3000 K	82
476507	14T5HE/46-835/IF20/G/DIM 10/1	200 °	835	3500 K	82
476515	14T5HE/46-840/IF21/G/DIM 10/1	200 °	841	4000 K	82
476523	14T5HE/46-850/IF21/G/DIM 10/1	200 °	850	5000 K	82
542050	25T5HO/COR/46-835/MF33/G 25/1	200 °	835	3500 K	80
542068	25T5HO/COR/46-840/MF35/G 25/1	200 °	841	4000 K	80
542076	25T5HO/COR/46-850/MF35/G 25/1	200 °	850	5000 K	80

### Light Technical (2/2)

Order Code	Full Product Name	Luminous Flux (Nom)
467134	24T5HO/46-835/IF33/P/DIM 10/1	3300 lm
467142	24T5HO/46-840/IF35/P/DIM 10/1	3500 lm
467159	24T5HO/46-850/IF35/P/DIM 10/1	3500 lm
476416	8T5HE/22-830/IF10/G/DIM 10/1	1000 lm
476424	8T5HE/22-835/IF10/G/DIM 10/1	1000 lm
476432	8T5HE/22-840/IF10/G/DIM 10/1	1050 lm
476440	8T5HE/22-850/IF10/G/DIM 10/1	1050 lm
476457	11T5HE/34-830/IF14/G/DIM 10/1	1400 lm
476465	11T5HE/34-835/IF14/G/DIM 10/1	1400 lm

Order Code	Full Product Name	Luminous Flux (Nom)
476473	11T5HE/34-840/IF15/G/DIM 10/1	1500 lm
476481	11T5HE/34-850/IF15/G/DIM 10/1	1500 lm
476499	14T5HE/46-830/IF20/G/DIM 10/1	2000 lm
476507	14T5HE/46-835/IF20/G/DIM 10/1	2000 lm
476515	14T5HE/46-840/IF21/G/DIM 10/1	2100 lm
476523	14T5HE/46-850/IF21/G/DIM 10/1	2100 lm
542050	25T5HO/COR/46-835/MF33/G 25/1	3300 lm
542068	25T5HO/COR/46-840/MF35/G 25/1	3500 lm
542076	25T5HO/COR/46-850/MF35/G 25/1	3500 lm

### Temperature

Order Code	Full Product Name	T-Case Maximum (Nom)
467134	24T5HO/46-835/IF33/P/DIM 10/1	45 °C
467142	24T5HO/46-840/IF35/P/DIM 10/1	45 °C
467159	24T5HO/46-850/IF35/P/DIM 10/1	45 °C
476416	8T5HE/22-830/IF10/G/DIM 10/1	70 °C
476424	8T5HE/22-835/IF10/G/DIM 10/1	70 °C
476432	8T5HE/22-840/IF10/G/DIM 10/1	70 °C
476440	8T5HE/22-850/IF10/G/DIM 10/1	70 °C
476457	11T5HE/34-830/IF14/G/DIM 10/1	70 °C
476465	11T5HE/34-835/IF14/G/DIM 10/1	70 °C
476473	11T5HE/34-840/IF15/G/DIM 10/1	70 °C
476481	11T5HE/34-850/IF15/G/DIM 10/1	70 °C
476499	14T5HE/46-830/IF20/G/DIM 10/1	70 °C
476507	14T5HE/46-835/IF20/G/DIM 10/1	70 °C
476515	14T5HE/46-840/IF21/G/DIM 10/1	70 °C

Order Code	Full Product Name	T-Case Maximum (Nom)
476523	14T5HE/46-850/IF21/G/DIM 10/1	70 °C
542050	25T5HO/COR/46-835/MF33/G 25/1	75 °C
542068	25T5HO/COR/46-840/MF35/G 25/1	75 °C
542076	25T5HO/COR/46-850/MF35/G 25/1	75 °C

