



# Architectural Lighting DMX Controls and Wiring Accessories

## Uni DMX controls and accessories

The ZXP399 DMX Controls and Wiring Accessories are to be used with our architectural and facade lighting luminaires (UniFlood C, M and G, UniStrip G4, UniEdge, UniDot G2, UniString and UniBar). DMX Controls include a main controller, stand-alone controller, sub-controllers, DMX amplifier and DMX addressing device.

Main Controller: Industrial computer that can control up to 6,000 DMX universes.

Stand-alone Controller: Fits all medium applications with up to 700 DMX universes.

Wiring accessories include leader and jump cables with male and female IP67

connectors and end-caps. Addressing Device: Hand-held device that can write DMX addresses to a whole run on-site within minutes. DMX Amplifier: Compact, IP65 and low-power repeater that can amplify the DMX signal for up to 100 metres.

### Application

- Bridges, Monuments, Facades
- Landscape
- Parks and Plazas

Uni DMX controls and accessories

Versions



ZXP399 Endcap F



sub-controller 8P DMX



ZXP399 Endcap M



standalone controller



DMX Amplifier



ZXP399 Y Connector



Addressing Kit



DMX Amplifier



DMX Amplifier

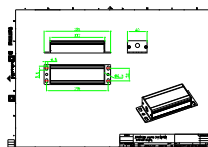
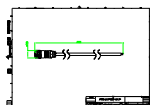


ZXP399 Jumper DMX connector

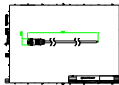
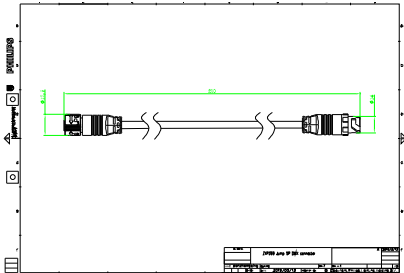
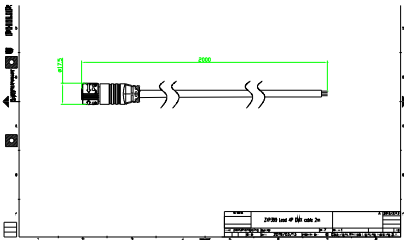
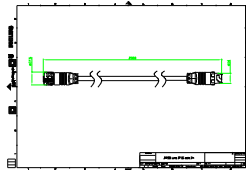
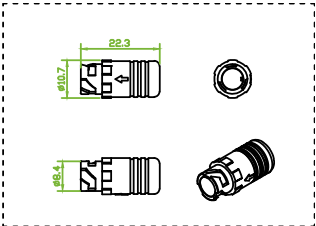
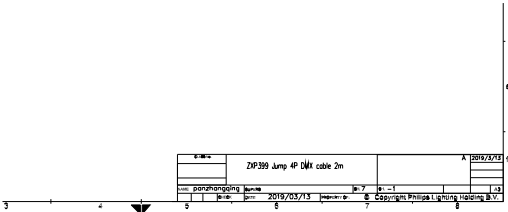
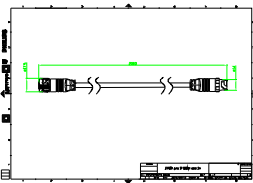
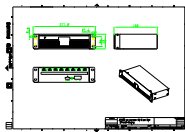


DMX Amplifier

Dimensional drawing

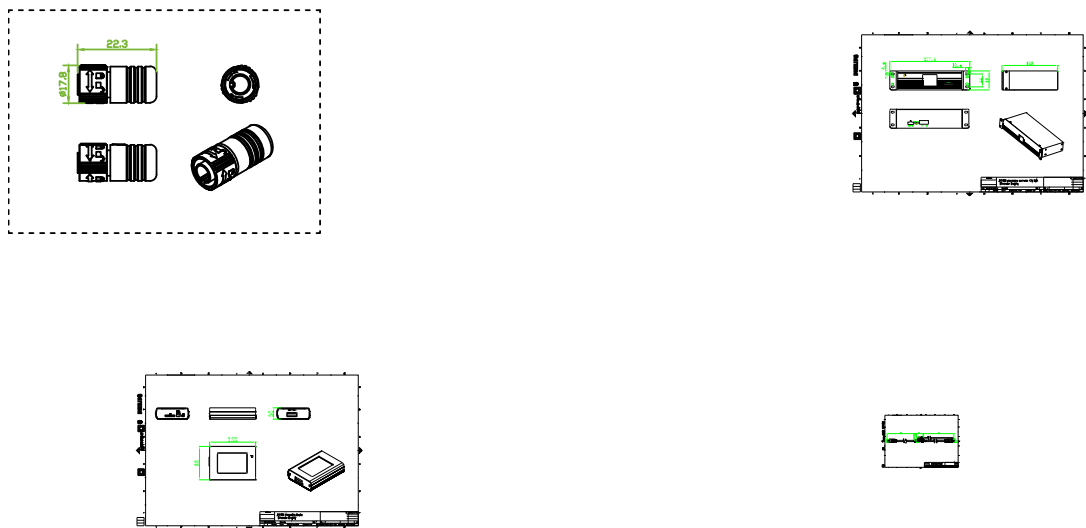


Dimensional drawing



Uni DMX controls and accessories

Dimensional drawing



Product details

DMX sub-controller



DMX stand-alone controller



DMX sub-controller



DMX sub-controller



DMX stand-alone controller



DMX addressing kit



Uni DMX controls and accessories

Product details

DMX addressing kit



DMX addressing kit



DMX stand-alone controller



DMX stand-alone controller



DMX stand-alone controller

