



Superior Light quality comes at lower energy and maintenance cost

Durabay Prime Highbay

With the successful introduction of the Durabay Family, Philips achieved a breakthrough in high-bay lighting, providing the superior light quality, long service lifetime, reduced energy consumption and less maintenance in the switch on-off (PSU) and Dali dimmable (PSD) versions. Now, with Durabay Prime, Philips continues to improve even further: an improved total cost of ownership, seamlessly integrates state-of-the-art LED lighting with higher efficacy and excellent thermal stability. Durabay Prime delivers a uniform light distribution with a Wide beam and Narrow beam optics that provides outstanding illuminances in industrial and retail environments. It is designed to replace HPI BU 250W/400W, offering up to 70% of energy savings, whilst delivering long lifetime, in often hard to reach maintenance areas.

Benefits

- Suitable for use in harsh Industrial environment
- Option of multiple optics and lumen packages providing application flexibility
- Best in class efficacy and Quality lighting leads to lowering total cost of opportunity
- High quality material and design leads to longer life class for luminaire

Durabay Prime Highbay

Features

- Ingress Protection -IP66
- Impact Resistance IK08
- Inbuilt encapsulated Potted Driver
- Designed for operations under diverse environment from -10°C to 45°C
- Life class is 50000 hours (L70B50 @ Ta45°C)
- Unique Fin design for excellent thermal stability
- Toughened and shatter-proof quality of glass and built-in lens plate enhances safety
- Pressure die-cast housing offers excellent corrosion-resistance and robustness
- System efficiency >130 lm/W
- Two Beam Angles Narrow beam (NB60°) & Wide Beam (WB110°)
- High Voltage Cutoff @ 325 ± 15V with Auto Restart feature
- 440V Protection for 8 Hrs. (Phase to Phase)
- Internal Surge Protection 4KV

Application

- Manufacturing
- Arena and Sports
- Warehouses
- Airports
- Small Manufacturing facilities

Warnings and Safety

- Meant for use in Indoor Industrial environment only

Versions



BY225P_BY226P

Product details



BY225P_BY226P

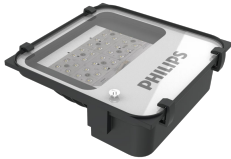


BY225P_BY226P

Durabay Prime Highbay

Product details

BY225P_BY226P



Application Conditions	
Ambient temperature range	0 to +45 °C
Approval and Application	
Mech. impact protection code	IK08
Ingress protection code	IP66
Controls and Dimming	
Dimmable	No
Operating and Electrical	
Input Voltage	140-270 V
General Information	
Protection class IEC	Safety class I
Optical cover/lens type	Tempered glass
Driver included	Yes
Flammability mark	For mounting on normally flammable surfaces
Initial Performance (IEC Compliant)	
Initial chromaticity	<5
Mechanical and Housing	
Color	Gray

General Information

Order Code	Full Product Name	Beam angle of light source	Optic type
919515812901	BY225P LED100S CW NB PSU FG GR V1	60 °	Beam angle 60°
919515812902	BY225P LED100S CW WB PSU FG GR V1	110 °	Beam angle 110°
919515813031	BY225P LED135S CW NB PSU FG GR V1	60 °	Beam angle 60°
919515813032	BY225P LED135S CW WB PSU FG GR V1	110 °	Beam angle 110°
919615811201	BY226P LED120S CW SY110 PSU FG GR P4061	110 °	Symmetric 110°

Initial Performance (IEC Compliant) (1/2)

Order Code	Full Product Name	Init. Corr. Color Temperature	Init. Color Rendering Index	Initial LED luminaire efficacy	Initial luminous flux
919515812901	BY225P LED100S CW NB PSU FG GR V1	6500 K	>80	131.25 lm/W	10500 lm
919515812902	BY225P LED100S CW WB PSU FG GR V1	6500 K	>80	131.25 lm/W	10500 lm
919515813031	BY225P LED135S CW	6500 K	>80	133.33 lm/W	14000 lm

Order Code	Full Product Name	Init. Corr. Color Temperature	Init. Color Rendering Index	Initial LED luminaire efficacy	Initial luminous flux
919515813032	BY225P LED135S CW WB PSU FG GR V1	6500 K	>80	133.33 lm/W	14000 lm
919615811201	BY226P LED120S CW	5700 K	>70	120 lm/W	12500 lm

Durabay Prime Highbay

Order Code	Full Product Name	Init. Corr. Color Temperature	Init. Color Rendering Index	Initial LED luminaire efficacy	Initial luminous flux
	SY110 PSU FG				
	GR P4061				

Initial Performance (IEC Compliant) (2/2)

Order Code	Full Product Name	Initial input power
919515812901	BY225P LED100S CW NB PSU FG GR V1	80 W
919515812902	BY225P LED100S CW WB PSU FG GR V1	80 W
919515813031	BY225P LED135S CW NB PSU FG GR V1	105 W

Order Code	Full Product Name	Initial input power
919515813032	BY225P LED135S CW WB PSU FG GR V1	105 W
919615811201	BY226P LED120S CW SY110 PSU FG GR P4061	105 W

