



# Solar Lanterns for off-grid communities

## LifeLight

Solar lantern for offgrid communities with mobile charging facility and optional AC charging. By harnessing the abundant energy from the sun, these LED lanterns deliver free and clean lighting along with additional facility to charge mobile phones.

### Benefits

- Long lasting lantern with clean and soothing white light with diffuser that ensures surround light
- Choice of different lighting levels to suit different activities and extended duration of usage.
- Replaceable lithium ferro phosphate battery
- Facility to charge mobile phones via USB cables
- Optional facility to charge the lamp with AC power in case of low sunlight
- Intuitive display to measure battery charging
- Adjustable handle for ease of use
- Robust IP65, water and dust proof construction.

### Features

- Portable highly efficient LED solar light.
- 110/200 Lumen White LED Solar Light
- Replaceable lithium ferro phosphate battery
- Efficient solar panel with 3 meter wire and tiltable legs
- USB Port for mobile charging
- Optional AC charging facility
- ON/OFF button with 3 Light settings High, Medium, Low
- RED LED low battery indicator
- Green LED charging Indicator
- Robust IP65, water and dust proof construction.
- Upto 20 Hours of Light on low setting
- 360 degree Adjustable handle

## Application

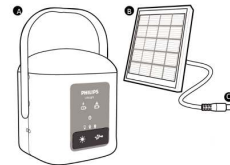
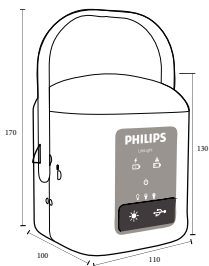
- Homes
- Small shops and business establishments
- Guard rooms
- Elementary schools
- Community centers
- Adventure sports – Camps, tents, hikers etc
- Emergency lights for Natural Disaster management teams

## Versions



Lifelight plus render 1

## Dimensional drawing



Light Technical	
Correlated Color Temperature (Nom)	6500 K
Color rendering index (CRI)	>80
Operating and Electrical	
Battery charging & discharging cycles	2000
Battery type	Lithium Ferro Phosphate
Battery voltage	3.2 V
Charge controller type	MPPT
Panel type	Mono crystalline
Panel voltage	5 Vmp V
Temperature	
Ambient temperature range	0 to +45 °C
Controls and Dimming	
Dimmable	Yes
Configurability	Not configurable
Mechanical and Housing	
Overall height	130 mm
Overall length	100 mm
Overall width	110 mm
Approval and Application	
Ingress protection code	IP65
Application Conditions	
Battery location	Integrated
Grid connection type	Off grid
Autonomy	upto 20 hour(s)
Solar dimming profile	High

Operating and Electrical

Order Code	Full Product Name	Battery ampere hour	Cable connection kit	Charge	Panel peak
				controller wattage	wattage
919515812909	Solar Lamp Lifelight plus	3 Ah	Included	5 W	4 W
919515813014	Solar Lamp Lifelight plus- Standalone	3 Ah	Excluded	5 W	4 W
919515812647	Solar Life Light -WC	1.5 Ah	Included	4 W	1.6 W
919515812767	Solar Life Light	1.5 Ah	Included	4 W	1.6 W
919615811161	Solar Life Light standalone	1.5 Ah	Excluded	4 W	1.6 W
919515812908	Solar Lamp Lifelight plus - WC	3 Ah	Included	5 W	4 W

Mechanical and Housing

Order Code	Full Product Name	Housing Color
919515812909	Solar Lamp Lifelight plus	Red
919515813014	Solar Lamp Lifelight plus-Standalone	Red
919515812647	Solar Life Light -WC	Blue

Order Code	Full Product Name	Housing Color
919515812767	Solar Life Light	Blue
919615811161	Solar Life Light standalone	Blue
919515812908	Solar Lamp Lifelight plus -WC	Red

Application Conditions

Order Code	Full Product Name	Ambient temperature range for charging	Ambient temperature range for discharging (when light is on)
919515812909	Solar Lamp Lifelight plus	0 °C to +45 °C	-20 °C to +35 °C
919515813014	Solar Lamp Lifelight plus-Standalone	0 °C to +45 °C	-20 °C to +35 °C
919515812647	Solar Life Light -WC	0 °C to +45 °C	-20 °C to +35 °C

Order Code	Full Product Name	Ambient temperature range for charging	Ambient temperature range for discharging (when light is on)
919515812767	Solar Life Light	0 °C to +45 °C	-20 °C to +35 °C
919615811161	Solar Life Light standalone	0 °C to +45 °C	-20 °C to +35 °C
919515812908	Solar Lamp Lifelight plus -WC	0 °C to +45 °C	-20 °C to +35 °C

