



The professional Hybrid TLED (UL Type A+B) is a flexible solution for both Type A and Type B application

LED tube Type A+B

The professional TLED hybrid (Type A+B) is a flexible LED solution suitable for replacing T8 fluorescent lamps. The product works as a plug-and-play solution with existing electronic ballasts or can be used as a double-ended ballast bypass lamp depending on the application requirements. A flexible lamp for most TLED applications.

Benefits

- Flexible TLED solution for both Type A and Type B application
- Offers professional upgrade to LED lighting technology
- One lamp solution for two applications

Features

- Hybrid TLED (UL Type A+B) - works either with or without a ballast
- Excellent energy efficiency with DLC
- Reliable performance
- Conventional form factor to fit into existing luminaires
- No mercury

LED tube Type A+B

Application

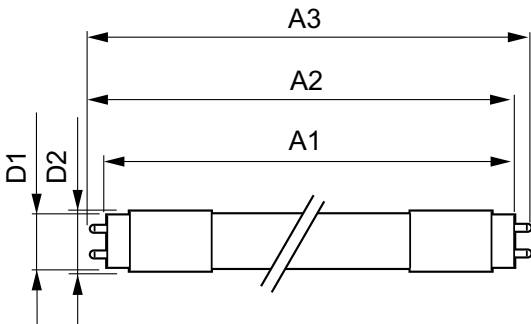
- Office and Shopping
- Industrial and warehouses
- Signage
- Parking lots and covered car parks

Versions



Medium Bi-Pin Fluorescent Tube,
double-ended Frosted

Dimensional drawing



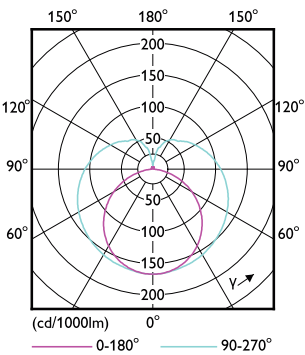
Product	D1	D2	A1	A2	A3
12.5T8/COR/ 48-850/FF/18/G 25/1	25.7 mm	28 mm	1198.2 mm	1205.3 mm	1212.4 mm
12.5T8/COR/ 48-835/FF/18/G 25/1	25.7 mm	28 mm	1198.2 mm	1205.3 mm	1212.4 mm
12.5T8/COR/ 48-840/FF/18/G 25/1	25.7 mm	28 mm	1198.2 mm	1205.3 mm	1212.4 mm

LED tube Type A+B

Controls and Dimming	
Dimmable	No
Operating and Electrical	
Input Frequency	50 to 60 Hz
Voltage (Nom)	120-277 V
Power (Rated) (Nom)	12.5, 13 W
Starting Time (Nom)	0.5 s
General Information	
Cap-Base	G13
Nominal Lifetime (Nom)	50000 h
Switching Cycle	50000X
Light Technical	
Beam Angle (Nom)	240 °
Color Rendering Index (Nom)	82
Llmf At End Of Nominal Lifetime (Nom)	70 %
Mechanical and Housing	
Bulb Finish	Frosted
Bulb Shape	Tube, double-ended
Temperature	
T-Ambient (Max)	45 °C
T-Ambient (Min)	-20 °C
T-Case Maximum (Nom)	60 °C
T-Storage (Max)	65 °C
T-Storage (Min)	-40 °C

Light Technical

		Correlated Color		
Order Code	Full Product Name	Color Code	Temperature (Nom)	Luminous Flux (Nom)
600189	12.5T8/COR/48-840/FF/18/G 25/1	841	4000 K	1800 lm
600197	12.5T8/COR/48-850/FF/18/G 25/1	850	5000 K	1800 lm
560193	12.5T8/COR/48-835/FF/18/G 25/1	835	3500 K	1700 lm



LED tube Type A+B

