



# Complete range of configurable and connected solar street lights upto 24000 lumens.

## RoadFlair Gen 4.0 Solar

Comprehensive range of solar street lights starting from 5000 lumens to 24000 lumens, with 170 lm/w efficacy, and option of hybrid versions. Suitable for major roads, highways and parking areas. configurable dimming profile and load wattage.

### Benefits

- Brings light to areas without access to electric grid
- Environment friendly
- Saves energy
- High efficacy reduces cost per light point by reducing battery and panel size
- Preserves landscape as no trenching for cabling required
- Sturdy construction for long life
- Smart city ready for sustainable cities

### Features

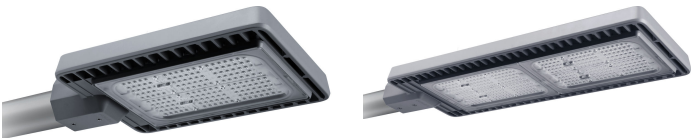
- High luminous efficacy of 170 lm/Watt.
- Configurable dimming profile and load wattage
- Compatible with multiple battery types ( LiFePO4, LMLA GEL)
- Pressure die-cast aluminum housing for sturdiness and excellent thermal management
- Available in both offgrid and hybrid versions

# RoadFlair Gen 4.0 Solar

## Application

- Highways
- Street
- Road
- Parking

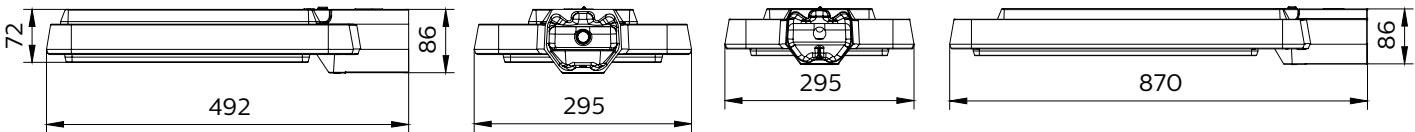
## Versions



RoadFlair BRP392 BRP393 DM

RoadFlair BRP394 DM

## Dimensional drawing



## RoadFlair Gen 4.0 Solar

### Light Technical

Correlated Color Temperature (Nom)	5700 K
Color rendering index (CRI)	>70

### Operating and Electrical

Cable connection kit	Included
----------------------	----------

### Temperature

Ambient temperature range	-30 to +50 °C
---------------------------	---------------

### Controls and Dimming

Dimmable	Yes
Configurability	Configurable

### Mechanical and Housing

Overall height	86 mm
Overall width	295 mm

### Approval and Application

Ingress protection code	IP66
-------------------------	------

### Application Conditions

Battery location	Outside Luminaire
Solar dimming profile	Configurable

### Mechanical and Housing

Order Code	Full Product Name	Overall length
911401815702	BRP392 LED80/CW 50W DM SD 12.5M	492 mm
911401815902	BRP394 LED240/CW 150W DM SD 12.5M	870 mm

