



# FlexBlend heading the way to efficient and flexible furnished offices areas

## FlexBlend, Suspended

Philips FlexBlend is an attractive family of surface mounted and suspended luminaires, next to Flexblend recessed. The luminaire range is enabling building owners to advance their lighting operations, by offering office-compliant lighting with a return on investment of less than 3 to 4 years. FlexBlend provides the required flexibility through the adaptability in design. This gives the possibility to install the luminaires easily in the field, at any moment. Even when today's luminaire is suspended, tomorrow this can be adapted to a surface mounted installation at the venue. And the other way around. . The surface mounted and suspended luminaire range fit to many different office spaces like open plan office, corridors, reception or meeting rooms. FlexBlend is offered in both lines and as standalone, using the same lighting module. This gives the option to the users to use FlexBlend as standalone now, and tomorrow, as line. The controller is integrated in the luminaire. As technology is changing fast, the ideal lighting solution is also expected to be ready to incorporate innovations that can help optimize operations further. For this reason, FlexBlend holds all connectivity and future ready options available. As System Ready luminaire it can be paired with lighting management systems such as the Philips SpaceWise, and to software-based lighting systems as Interact Office wired (PoE) and Interact Office wireless and/or existing and upcoming sensor innovations. The luminaire range is therefore future ready and can be delivered without any system component, and in a next phase, in the field to be upgraded. An attractive opportunity for new installations and renovations.

# FlexBlend, Suspended

## Benefits

- Return of investment less than 3 years
- A flexible office, with application flexibility to the choice of luminaires to fit many office areas
- Future ready: scalable and ready to be connected to controls and lighting systems

## Features

- Fully office compliant (UGR <19, L65< 3000cd/sm) , light level according to office applications requirements
- Homogenous and uniform light effect
- Various mounting options, dimensional variety and local options
- Integrated sensors
- Ready to be connected to software based lighting systems such as Interact Office

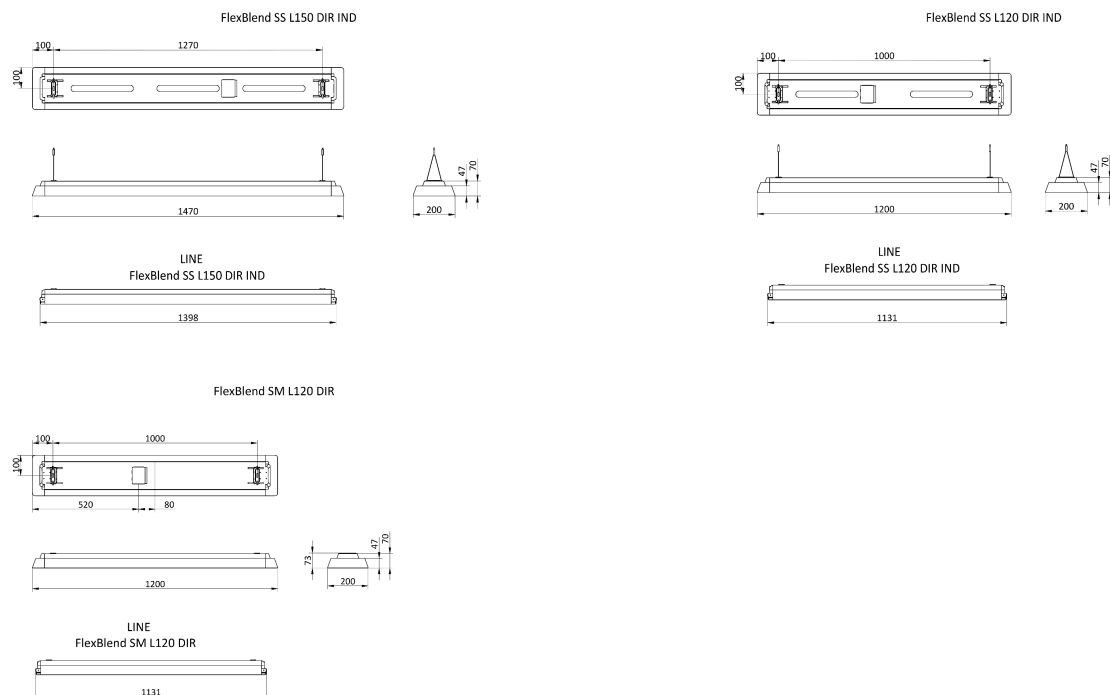
## Application

- Offices
- Education
- Healthcare

## Warnings and Safety

- The product is IPX0 & as such is not protected against water ingress & as such we strongly recommend that the environment in which the luminaire is to be installed is suitably checked
- If The above advice is not taken and the luminaires are subject to water ingress, Philips / Signify cannot guarantee safe failure & product warranty will become void

## Dimensional drawing



# FlexBlend, Suspended

## Product details



FlexBlend Suspended SP340P WH



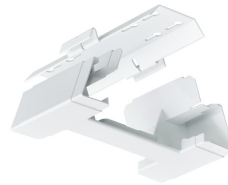
FlexBlend Suspended SP340P



FlexBlend Suspended SP340P PCS  
WH



FlexBlend Suspended SP340P SI



FlexBlend Suspended SP340P WH



FlexBlend Surface Mounted  
SM340C



FlexBlend Suspended SP340P  
MLO WH



FlexBlend Suspended SP340P WH

# FlexBlend, Suspended

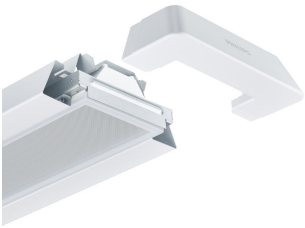
## Product details



FlexBlend Suspended SP340P WH



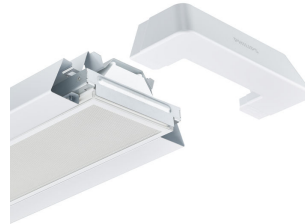
FlexBlend Suspended SP340P WH



FlexBlend Suspended SP340P  
MLO WH



FlexBlend Suspended SP340P BK



FlexBlend Suspended SP340P PCS  
WH

# FlexBlend, Suspended

## General Information

CE mark	Yes
Driver included	Yes
ENEC mark	ENEC plus mark
Flammability mark	For mounting on normally flammable surfaces
Light source replaceable	No
Number of gear units	1 unit
Service tag	Yes

## Light Technical

Beam angle of light source	120 degree(s)
Correlated Color Temperature (Nom)	4000 K
Color rendering index (CRI)	>90
Optic type	Wide beam
Flickering value (PstLM) - Flickering value as per EN 61000-3-3	1
Stroboscopic effect visibility measure (SVM)	0.4

## Operating and Electrical

Input Voltage	220 to 240 V
Line Frequency	50 to 60 Hz

## Temperature

Ambient temperature range	+10 to +40 °C
---------------------------	---------------

## Controls and Dimming

Dimmable	Yes
----------	-----

## Mechanical and Housing

Housing Color	White RAL 9003
---------------	----------------

## Approval and Application

Protection class IEC	Safety class I
Mech. impact protection code	IK02
Ingress protection code	IP20

## Initial Performance (IEC Compliant)

Initial chromaticity	(0.43, 0.40) SDCM <3
Luminous flux tolerance	+/-10%

## Application Conditions

Maximum dim level	1%
Suitable for random switching	Yes (relates to presence/movement detection and daylight harvesting)

## General Information

Order Code	Full Product Name	Glow-wire test	Product family code
910925867126	SP340P 36S/940 PSD PCS SMT L120 WH	Temperature 850 °C, duration 30 s	SP340P
910925867130	SP342P 48S/940 PSD PCS SMT L120 WH	Temperature 850 °C, duration 30 s	SP342P
910925867112	SP342P 45S/940 PSD MLO SMT L150 WH	Temperature 650 °C, duration 30 s	SP342P
910925867128	SP340P 36S/940 PSD MLO SMT L120 WH	Temperature 650 °C, duration 30 s	SP340P

# FlexBlend, Suspended

## Light Technical

Order Code	Full Product Name	Luminous Efficacy	
		(rated) (Nom)	Luminous Flux
910925867126	SP340P 36S/940 PSD PCS SMT L120 WH	136 lm/W	3,600 lm
910925867130	SP342P 48S/940 PSD PCS SMT L120 WH	133 lm/W	4,800 lm

Order Code	Full Product Name	Luminous Efficacy	
		(rated) (Nom)	Luminous Flux
910925867112	SP342P 45S/940 PSD MLO SMT L150 WH	106 lm/W	4,500 lm
910925867128	SP340P 36S/940 PSD MLO SMT L120 WH	103 lm/W	3,600 lm

## Operating and Electrical

Order Code	Full Product Name	Power Consumption
910925867126	SP340P 36S/940 PSD PCS SMT L120 WH	26.5 W
910925867130	SP342P 48S/940 PSD PCS SMT L120 WH	36 W

Order Code	Full Product Name	Power Consumption
910925867112	SP342P 45S/940 PSD MLO SMT L150 WH	42.5 W
910925867128	SP340P 36S/940 PSD MLO SMT L120 WH	35 W

