



New generation of specialty LEDtube

Specialty LEDtube

Philips specialty LEDtube integrates a LED light source into a traditional fluorescent form factor. This product is the ideal solution for relamping to serve multi-purpose usage: it meets general lighting requirements, offers significant energy savings, and special function such as Visible Light Communication.

Benefits

- Highly energy-efficient
- Conventional form factor to fit into existing luminaires
- Easy installation
- No mercury

Features

- Reduced operational cost thanks to lower energy consumption
- Fastest and easiest way to upgrade existing luminaires to LED technology, completely safe product and installation process
- Lower maintenance cost thanks to 2-3 times longer lifetime than conventional lamps

Application

- Hospitality, retail, office, industrial applications

Specialty LEDtube

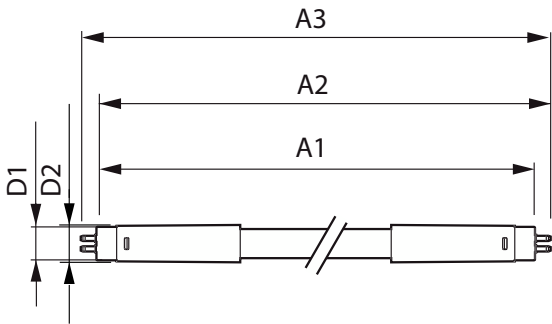
Versions



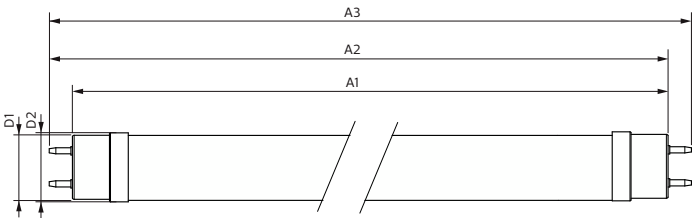
LEDtube MAS GC1 20W G5

LEDtube 220-240V G13 4ft

Dimensional drawing



Product	D1	D2	A1	A2	A3
MAS LEDtube Spectrum 1200mm 2000lm T5	15.2 mm	18/22 mm	1,147.8 mm	1,154.9 mm	1,162 mm



Product	D1	D2	A1	A2	A3
Sensor LEDtube 1200mm 16W 840 T8	25.7 mm	28 mm	1,198.2 mm	1,205.3 mm	1,212.4 mm
Sensor LEDtube 1200mm 16W 865 T8	25.7 mm	28 mm	1,198.2 mm	1,205.3 mm	1,212.4 mm

Specialty LEDtube

General Information	
Switching Cycle	50,000
Light Technical	
LLMF At End Of Nominal Lifetime (Nom)	70 %
Operating and Electrical	
Input Frequency	50 to 60 Hz
Starting Time (Nom)	0.5 s
Mechanical and Housing	
Bulb Finish	Frosted

General Information

Order Code	Full Product Name	Cap-Base	Nominal lifetime	Order Code	Full Product Name	Cap-Base	Nominal lifetime
929003574510	MAS LEDtube Spectrum 1200mm 2000lm T5	G5	50,000 hour(s)	929003103310	Sensor LEDtube 1200mm 16W 840 T8	G13	30,000 hour(s)
				929003103410	Sensor LEDtube 1200mm 16W 865 T8	G13	30,000 hour(s)

Light Technical

Order Code	Full Product Name	Beam Angle (Nom)	Correlated Color Temperature (Nom)	Color rendering index (CRI)	Color Code	Luminous Flux
929003574510	MAS LEDtube Spectrum 1200mm 2000lm T5	160 degree(s)	2200 K	50	2200	2,000 lm
929003103310	Sensor LEDtube 1200mm 16W 840 T8	240 degree(s)	4000 K	80	840	1,800 lm
929003103410	Sensor LEDtube 1200mm 16W 865 T8	240 degree(s)	6500 K	80	865	1,800 lm

Operating and Electrical

Order Code	Full Product Name	Line Frequency	Power	Wattage	Order Code	Full Product Name	Line Frequency	Power	Wattage
			Consumption	Equivalent				Consumption	Equivalent
929003574510	MAS LEDtube Spectrum 1200mm 2000lm T5	-	20 W	28 W	929003103410	Sensor LEDtube 1200mm 16W 865 T8	50 to 60 Hz	16 W	-
929003103310	Sensor LEDtube 1200mm 16W 840 T8	50 to 60 Hz	16 W	-					

Temperature

Order Code	Full Product Name	Ambient temperature	T-Case	Order Code	Full Product Name	Ambient temperature	T-Case
		range	Maximum (Nom)			range	Maximum (Nom)
929003574510	MAS LEDtube Spectrum 1200mm 2000lm T5	-20 to +45 °C	55 °C	929003103410	Sensor LEDtube 1200mm 16W 865 T8	-20 °C to 45 °C	50 °C
929003103310	Sensor LEDtube 1200mm 16W 840 T8	-20 °C to 45 °C	50 °C				

Controls and Dimming

Order Code	Full Product Name	Dimmable	Order Code	Full Product Name	Dimmable
929003574510	MAS LEDtube Spectrum 1200mm 2000lm T5	No	929003103310	Sensor LEDtube 1200mm 16W 840 T8	Only with specific dimmers

Order Code	Full Product Name	Dimmable
929003103410	Sensor LEDtube 1200mm 16W 865 T8	Only with specific dimmers

Mechanical and Housing

Order Code	Full Product Name	Bulb Shape
929003574510	MAS LEDtube Spectrum 1200mm 2000lm T5	T5
929003103310	Sensor LEDtube 1200mm 16W 840 T8	T8
929003103410	Sensor LEDtube 1200mm 16W 865 T8	T8

